

Datasheet for ABIN6748530
anti-PPME1 antibody (AA 35-84)[Go to Product page](#)

2 Images

Overview

Quantity:	100 µL
Target:	PPME1
Binding Specificity:	AA 35-84
Reactivity:	Human, Mouse, Rat, Cow, Dog, Pig, Guinea Pig, Horse, Rabbit, Monkey
Host:	Rabbit
Clonality:	Polyclonal
Conjugate:	This PPME1 antibody is un-conjugated
Application:	Western Blotting (WB), Immunohistochemistry (IHC), Immunohistochemistry (Paraffin-embedded Sections) (IHC (p))

Product Details

Brand:	IHC-plus™
Immunogen:	Synthetic peptide located between aa35-84 of human PPME1 (Q9Y570, NP_057231). Percent identity by BLAST analysis: Human, Chimpanzee, Gorilla, Orangutan, Galago, Marmoset, Mouse, Rat, Elephant, Dog, Bovine, Rabbit, Horse, Pig (100%), Panda, Bat, Turkey, Chicken, Platypus (92%), Stickleback (83%), Guinea pig (81%). Type of Immunogen: Synthetic peptide
Isotype:	IgG
Specificity:	Human PPME1
Predicted Reactivity:	Percent identity by BLAST analysis: Human, Mouse, Rat, Dog, Bovine, Horse, Pig (100%) Chicken

Product Details

(92%) Guinea pig (81%).

Purification: Immunoaffinity purified

Target Details

Target: PPME1

Alternative Name: PME-1 / PPME1 ([PPME1 Products](#))

Background: Name/Gene ID: PPME1

Synonyms: PPME1, PME-1, PME1

Gene ID: 51400

NCBI Accession: [NP_057231](#)

UniProt: [Q9Y570](#)

Pathways: [Methionine Biosynthetic Process](#)

Application Details

Application Notes: Approved: IHC, IHC-P (5 µg/mL), WB (0.2 - 1 µg/mL)

Usage: Western Blot: Suggested dilution at 1 µg/mL in 5 % skim milk / PBS buffer, and HRP conjugated anti-Rabbit IgG should be diluted in 1: 50,000 - 100,000 as second antibody. ELISA titer in peptide based assay: 1:312500.

Comment: Target Species of Antibody: Human

Restrictions: For Research Use only

Handling

Format: Lyophilized

Reconstitution: Distilled water

Concentration: Lot specific

Buffer: Lyophilized from PBS with 2 % sucrose

Handling Advice: Avoid repeat freeze-thaw cycles.

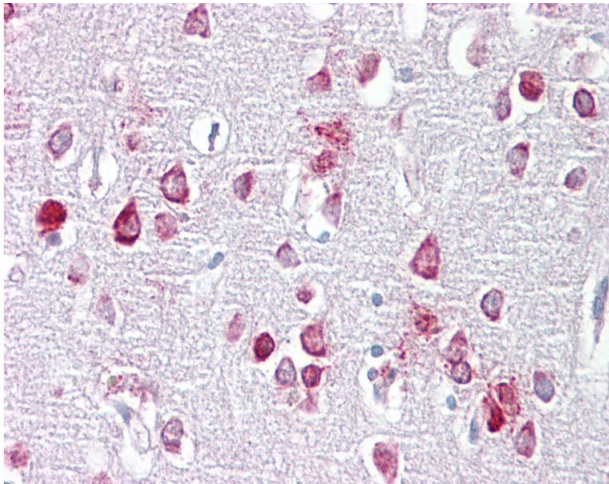
Storage: 4 °C, -20 °C

Handling

Storage Comment: Long term: -20°C, the use of 50% glycerol is recommended if storing aliquots in -20°C for long term use (up to 1 year)

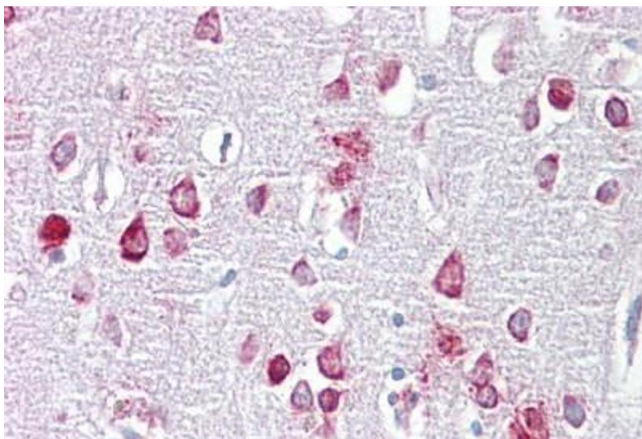
Short term (less than 1 week): 4°C. Avoid freeze-thaw cycles.

Images



Immunohistochemistry

Image 1. Anti-PPME1 antibody IHC of human brain, cortex. Immunohistochemistry of formalin-fixed, paraffin-embedded tissue after heat-induced antigen retrieval. Antibody concentration 5 ug/ml. This image was taken for the unconjugated form of this product. Ot ...



Immunohistochemistry

Image 2. Anti-PPME1 antibody IHC staining of human brain, cortex. Immunohistochemistry of formalin-fixed, paraffin-embedded tissue after heat-induced antigen retrieval. Antibody ABIN958319 concentration 5 ug/ml.