

Datasheet for ABIN6748532  
**anti-CPE antibody (AA 36-85)**[Go to Product page](#)

## 2 Images

## Overview

Quantity:	100 µL
Target:	CPE
Binding Specificity:	AA 36-85
Reactivity:	Human, Mouse, Rat, Cow, Guinea Pig, Rabbit, Zebrafish (Danio rerio), Monkey, Bat, Xenopus laevis
Host:	Rabbit
Clonality:	Polyclonal
Conjugate:	This CPE antibody is un-conjugated
Application:	Western Blotting (WB), Immunohistochemistry (IHC), Immunohistochemistry (Paraffin-embedded Sections) (IHC (p))

## Product Details

Brand:	IHC-plus™
Immunogen:	Synthetic peptide located between aa36-85 of human CPE (P16870, NP_001864). Percent identity by BLAST analysis: Human, Chimpanzee, Gorilla, Gibbon, Monkey, Marmoset, Mouse, Rat, Elephant, Bovine, Bat, Rabbit, Opossum, Guinea pig, Xenopus (100%), Pig (92%), Chicken, Stickleback, Zebrafish (84%).  Type of Immunogen: Synthetic peptide
Isotype:	IgG
Specificity:	Human CPE

## Product Details

Predicted Reactivity: Percent identity by BLAST analysis: Human, Mouse, Rat, Xenopus (100%) Pig (92%) Chicken, Zebrafish (84%).

Purification: Immunoaffinity purified

## Target Details

Target: CPE

Alternative Name: Carboxypeptidase e / CPE ([CPE Products](#))

Background: Name/Gene ID: CPE

Subfamily: Metallopeptidase M14

Family: Exopeptidase

Synonyms: CPE, Carboxypeptidase E, CPH, Carboxypeptidase H, Enkephalin convertase

Gene ID: 1363

NCBI Accession: [NP\\_001864](#)

UniProt: [P16870](#)

Pathways: [Peptide Hormone Metabolism](#), [Synaptic Membrane](#)

## Application Details

Application Notes: Approved: IHC, IHC-P (5 µg/mL), WB (0.2 - 1 µg/mL)

Usage: Western Blot: Suggested dilution at 1 µg/mL in 5 % skim milk / PBS buffer, and HRP conjugated anti-Rabbit IgG should be diluted in 1: 50,000 - 100,000 as second antibody. ELISA titer in peptide based assay: 1:312500.

Comment: Target Species of Antibody: Human

Restrictions: For Research Use only

## Handling

Format: Lyophilized

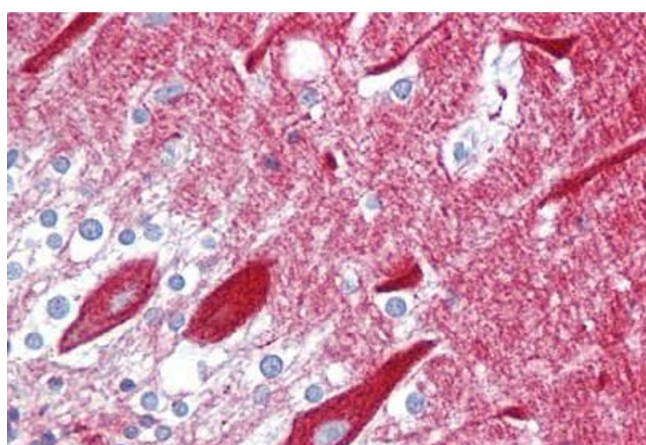
Reconstitution: Distilled water

Concentration: Lot specific

## Handling

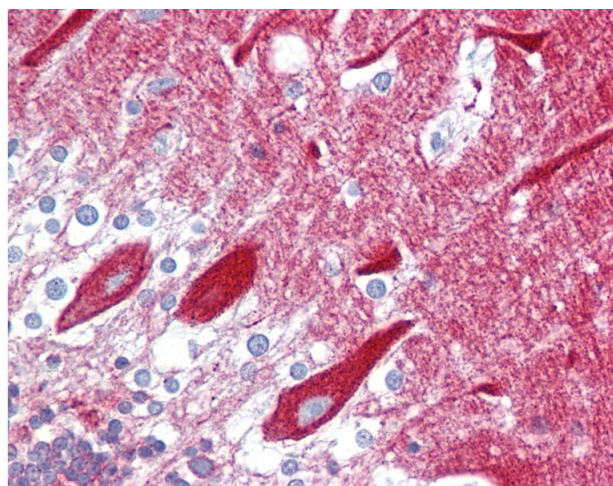
Buffer:	Lyophilized from PBS with 2 % sucrose
Handling Advice:	Avoid repeat freeze-thaw cycles.
Storage:	4 °C, -20 °C
Storage Comment:	Long term: -20°C, the use of 50% glycerol is recommended if storing aliquots in -20°C for long term use (up to 1 year) Short term (less than 1 week): 4°C. Avoid freeze-thaw cycles.

## Images



### Immunohistochemistry

**Image 1.** Anti-CPE antibody IHC staining of human brain, cerebellum. Immunohistochemistry of formalin-fixed, paraffin-embedded tissue after heat-induced antigen retrieval. Antibody ABIN958305 concentration 5 ug/ml.



### Immunohistochemistry

**Image 2.** Anti-CPE antibody IHC of human brain, cerebellum. Immunohistochemistry of formalin-fixed, paraffin-embedded tissue after heat-induced antigen retrieval. Antibody concentration 5 ug/ml. This image was taken for the unconjugated form of this product. ...