



[Go to Product page](#)

Datasheet for ABIN6748533  
**anti-TMTC4 antibody (AA 72-121)**

2 Images

Overview

Quantity:	100 µL
Target:	TMTC4
Binding Specificity:	AA 72-121
Reactivity:	Human, Rat, Cow, Dog, Horse, Zebrafish (Danio rerio), Rabbit, Pig, Bat, Monkey
Host:	Rabbit
Clonality:	Polyclonal
Conjugate:	This TMTC4 antibody is un-conjugated
Application:	Western Blotting (WB), Immunohistochemistry (IHC), Immunohistochemistry (Paraffin-embedded Sections) (IHC (p))

Product Details

Brand:	IHC-plus™
Immunogen:	Synthetic peptide located between aa72-121 of human TMTC4 (Q5T4D3, NP_116202). Percent identity by BLAST analysis: Human, Chimpanzee, Gorilla, Gibbon, Galago, Marmoset, Rat, Dog, Bovine, Bat, Rabbit, Horse, Pig (100%), Mouse, Opossum, Guinea pig, Turkey, Zebra finch, Chicken, Lizard (92%), Stickleback (90%), Platypus, Salmon, Zebrafish (85%).  Type of Immunogen: Synthetic peptide
Isotype:	IgG
Specificity:	Human TMTC4
Predicted Reactivity:	Percent identity by BLAST analysis: Human, Rat, Dog, Bovine, Rabbit, Horse, Pig (100%) Mouse,

## Product Details

---

Guinea pig, Chicken (92%) Zebrafish (85%).

Purification: Immunoaffinity purified

## Target Details

---

Target: TMTC4

Alternative Name: TMTC4 ([TMTC4 Products](#))

Background: Name/Gene ID: TMTC4

Synonyms: TMTC4

Gene ID: 84899

NCBI Accession: [NP\\_116202](#)

UniProt: [Q5T4D3](#)

## Application Details

---

Application Notes: Approved: IHC, IHC-P (5 µg/mL), WB (0.2 - 1 µg/mL)

Usage: Western Blot: Suggested dilution at 1 µg/mL in 5 % skim milk / PBS buffer, and HRP conjugated anti-Rabbit IgG should be diluted in 1: 50,000 - 100,000 as second antibody. ELISA titer in peptide based assay: 1:312500.

Comment: Target Species of Antibody: Human

Restrictions: For Research Use only

## Handling

---

Format: Lyophilized

Reconstitution: Distilled water

Concentration: Lot specific

Buffer: Lyophilized from PBS with 2 % sucrose

Handling Advice: Avoid repeat freeze-thaw cycles.

Storage: 4 °C, -20 °C

Storage Comment: Long term: -20°C, the use of 50% glycerol is recommended if storing aliquots in -20°C for long

## Handling

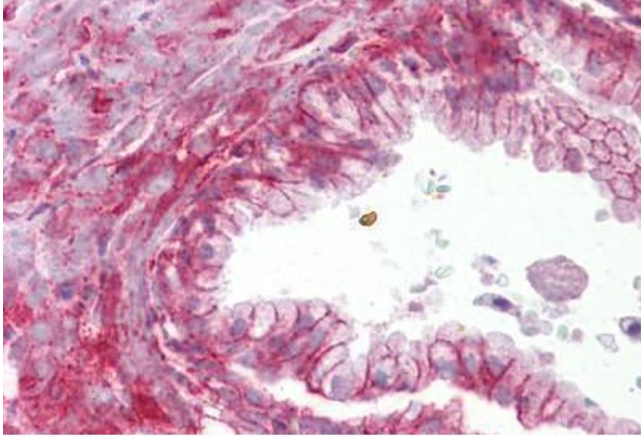
---

term use (up to 1 year)

Short term (less than 1 week): 4°C. Avoid freeze-thaw cycles.

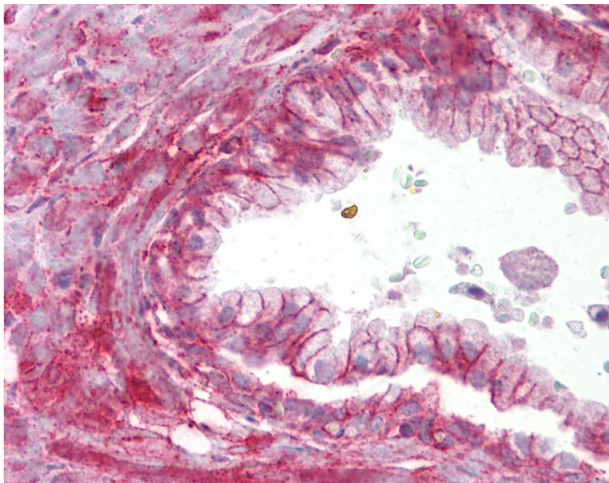
## Images

---



### Immunohistochemistry

**Image 1.** Anti-TMTC4 antibody IHC staining of human prostate. Immunohistochemistry of formalin-fixed, paraffin-embedded tissue after heat-induced antigen retrieval. Antibody ABIN958327 concentration 5 ug/ml.



### Immunohistochemistry

**Image 2.** Anti-TMTC4 antibody IHC of human prostate. Immunohistochemistry of formalin-fixed, paraffin-embedded tissue after heat-induced antigen retrieval. Antibody concentration 5 ug/ml. This image was taken for the unconjugated form of this product. Other f ...