

Datasheet for ABIN6748540
anti-ING3 antibody (AA 216-265)[Go to Product page](#)

1 Image

Overview

Quantity:	100 µL
Target:	ING3
Binding Specificity:	AA 216-265
Reactivity:	Human, Mouse, Rat, Dog, Cow, Guinea Pig, Horse, Rabbit, Chicken, Monkey, Pig, Bat, Xenopus laevis
Host:	Rabbit
Clonality:	Polyclonal
Conjugate:	This ING3 antibody is un-conjugated
Application:	Western Blotting (WB), Immunohistochemistry (IHC), Immunohistochemistry (Paraffin-embedded Sections) (IHC (p))

Product Details

Brand:	IHC-plus™
Immunogen:	Synthetic peptide located between aa216-265 of human ING3 (Q9NXR8, NP_061944). Percent identity by BLAST analysis: Human, Chimpanzee, Orangutan, Gibbon, Monkey, Galago, Marmoset, Mouse, Rat, Elephant, Panda, Dog, Bovine, Bat, Rabbit, Horse, Pig, Opossum, Guinea pig, Turkey, Zebra finch, Chicken, Platypus, Lizard, Xenopus (100%), Stickleback, Zebrafish (92%). Type of Immunogen: Synthetic peptide
Isotype:	IgG

Product Details

Specificity:	Human ING3
Predicted Reactivity:	Percent identity by BLAST analysis: Human, Mouse, Rat, Dog, Bovine, Rabbit, Horse, Pig, Chicken, Xenopus (100%) Zebrafish (92%).
Purification:	Immunoaffinity purified

Target Details

Target:	ING3
Alternative Name:	ING3 (ING3 Products)
Background:	Name/Gene ID: ING3 Synonyms: ING3, p47ING3, Inhibitor of growth protein 3, MEAF4, Eaf4, p47
Gene ID:	54556
NCBI Accession:	NP_061944
UniProt:	Q9NXR8

Application Details

Application Notes:	Approved: IHC, IHC-P (5 µg/mL), WB (0.2 - 1 µg/mL) Usage: Western Blot: Suggested dilution at 1 µg/mL in 5 % skim milk / PBS buffer, and HRP conjugated anti-Rabbit IgG should be diluted in 1: 50,000 - 100,000 as second antibody. ELISA titer in peptide based assay: 1:312500.
Comment:	Target Species of Antibody: Human
Restrictions:	For Research Use only

Handling

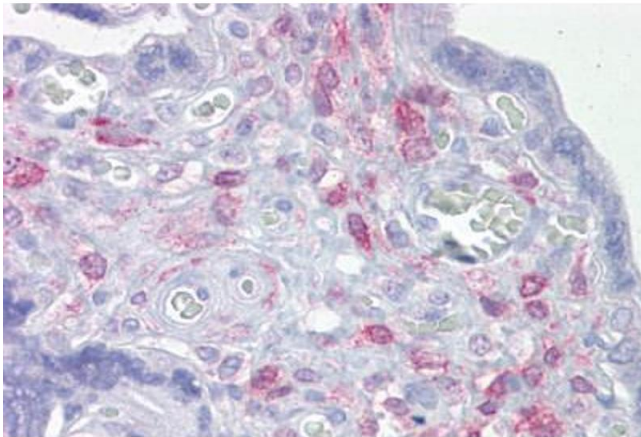
Format:	Lyophilized
Reconstitution:	Distilled water
Concentration:	Lot specific
Buffer:	Lyophilized from PBS with 2 % sucrose
Handling Advice:	Avoid repeat freeze-thaw cycles.

Handling

Storage: 4 °C, -20 °C

Storage Comment: Long term: -20°C, the use of 50% glycerol is recommended if storing aliquots in -20°C for long term use (up to 1 year)
Short term (less than 1 week): 4°C. Avoid freeze-thaw cycles.

Images



Immunohistochemistry

Image 1. Anti-ING3 antibody IHC staining of human placenta. Immunohistochemistry of formalin-fixed, paraffin-embedded tissue after heat-induced antigen retrieval. Antibody ABIN958309 concentration 5 ug/ml.