

Datasheet for ABIN6748542  
**anti-ENO1 antibody (AA 246-295)**

## 5 Images

[Go to Product page](#)

## Overview

Quantity:	100 µL
Target:	ENO1
Binding Specificity:	AA 246-295
Reactivity:	Human, Horse, Pig, Monkey, Chicken
Host:	Rabbit
Clonality:	Polyclonal
Conjugate:	This ENO1 antibody is un-conjugated
Application:	Western Blotting (WB), Immunohistochemistry (IHC), Immunohistochemistry (Paraffin-embedded Sections) (IHC (p))

## Product Details

Brand:	IHC-plus™
Immunogen:	Synthetic peptide located between aa246-295 of human ENO1 (Q53HR3, NP_001419). Percent identity by BLAST analysis: Human, Chimpanzee, Gorilla, Orangutan, Gibbon, Monkey, Marmoset, Pig, Zebra finch, Chicken (100%), Galago, Mouse, Rat, Elephant, Dog, Rabbit, Guinea pig, Platypus, Xenopus, Zebrafish (92%), Hamster, Salmon, Sablefish (85%).  Type of Immunogen: Synthetic peptide
Isotype:	IgG
Specificity:	Human ENO1
Predicted Reactivity:	Percent identity by BLAST analysis: Human, Pig, Chicken (100%) Mouse, Rat, Dog, Rabbit,

## Product Details

Guinea pig, Zebrafish (92%) Xenopus (85%).

Purification: Immunoaffinity purified

## Target Details

Target: ENO1

Alternative Name: ENO1 / alpha Enolase ([ENO1 Products](#))

Background: Name/Gene ID: ENO1

Synonyms: ENO1, Alpha Enolase, Alpha enolase like 1, ENO1L1, Enolase 1, MBP-1, MBPB1, MPB1, MYC promoter-binding protein 1, NNE, Phosphopyruvate hydratase, Alpha-enolase, Tau-crystallin, MBP1, MPB-1, C-myc promoter-binding protein, Enolase 1, (alpha), Enolase-alpha, Non-neural enolase, Plasminogen-binding protein, PPH

Gene ID: 2023

NCBI Accession: [NP\\_001419](#)

UniProt: [P06733](#)

## Application Details

Application Notes: Approved: IHC, IHC-P (5 µg/mL), WB (0.03 µg/mL)

Comment: Target Species of Antibody: Human

Restrictions: For Research Use only

## Handling

Format: Lyophilized

Reconstitution: After adding water, will consist of PBS buffer with 2 % sucrose

Concentration: Lot specific

Buffer: Lyophilized from PBS with 2 % sucrose

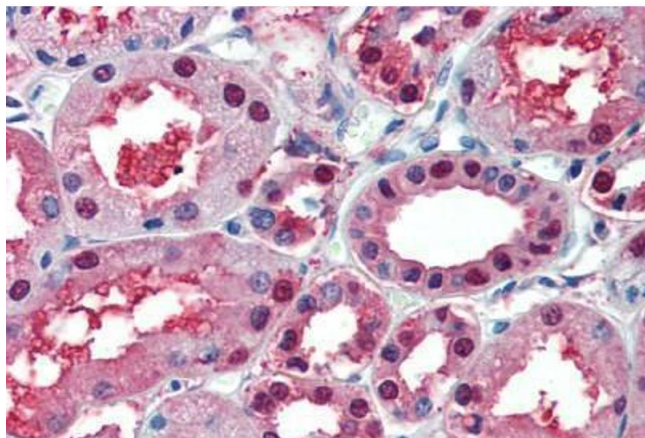
Handling Advice: Avoid repeat freeze-thaw cycles.

Storage: 4 °C, -20 °C

Storage Comment: Long term: -20°C, the use of 50% glycerol is recommended if storing aliquots in -20°C for long term use (up to 1 year)

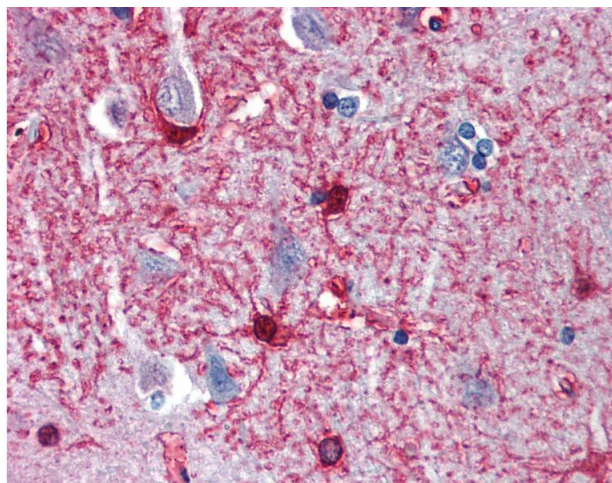
Short term (less than 1 week): 4°C. Avoid freeze-thaw cycles.

## Images



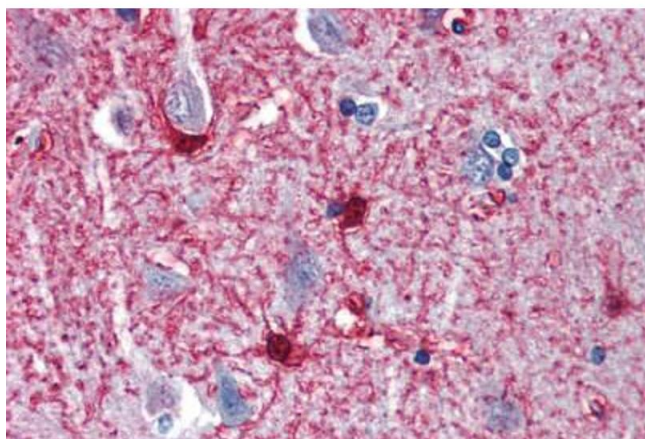
### Immunohistochemistry

**Image 1.** Anti-ENO1 antibody IHC staining of human kidney. Immunohistochemistry of formalin-fixed, paraffin-embedded tissue after heat-induced antigen retrieval. Antibody ABIN959054 concentration 5 ug/ml.



### Immunohistochemistry

**Image 2.** Anti-ENO1 antibody IHC of human brain, cortex. Immunohistochemistry of formalin-fixed, paraffin-embedded tissue after heat-induced antigen retrieval. Antibody concentration 5 ug/ml. This image was taken for the unconjugated form of this product. Oth ...



### Immunohistochemistry

**Image 3.** Anti-ENO1 antibody IHC staining of human brain, cortex. Immunohistochemistry of formalin-fixed, paraffin-embedded tissue after heat-induced antigen retrieval. Antibody ABIN959054 concentration 5 ug/ml.

Please check the [product details page](#) for more images. Overall 5 images are available for ABIN6748542.