

Datasheet for ABIN6748546  
**anti-Aurora A antibody (C-Term)**[Go to Product page](#)

## 2 Images

## Overview

Quantity:	100 µL
Target:	Aurora A (AURKA)
Binding Specificity:	C-Term
Reactivity:	Human, Cow, Sheep
Host:	Rabbit
Clonality:	Polyclonal
Conjugate:	This Aurora A antibody is un-conjugated
Application:	Western Blotting (WB), Immunohistochemistry (IHC), Immunohistochemistry (Paraffin-embedded Sections) (IHC (p))

## Product Details

Brand:	IHC-plus™
Immunogen:	Synthetic peptide from C-Terminus of human AURKA (O14965, NP_003591). Percent identity by BLAST analysis: Human, Chimpanzee, Gorilla (100%), Gibbon, Monkey, Marmoset (86%), Sheep, Bovine (80%).  Type of Immunogen: Synthetic peptide
Isotype:	IgG
Specificity:	Human AURKA / Aurora-A
Predicted Reactivity:	Percent identity by BLAST analysis: Human (100%) Sheep, Bovine (80%).
Purification:	Immunoaffinity purified

## Target Details

Target:	Aurora A (AURKA)
Alternative Name:	AURKA / Aurora-A ( <a href="#">AURKA Products</a> )
Background:	Name/Gene ID: AURKA Subfamily: Aurora/IPL1-like Family: Protein Kinase  Synonyms: AURKA, AIK, AIRK1, ARK1, Aurora-A kinase, Aurora kinase A, Aurora/IPL1-like kinase, AYK1, AURA, AURORA2, Breast tumor-amplified kinase, Breast-tumor-amplified kinase, BTAK, HARK1, IPL1-related kinase, Serine/threonine kinase 6, STK7, STK6, PPP1R47, ARK-1, Aurora 2, Aurora-A, Aurora-related kinase 1, Aurora/IPL1-related kinase 1, IAK1, Serine/threonine kinase 15, STK15
Gene ID:	6790
NCBI Accession:	<a href="#">NP_003591</a>
UniProt:	<a href="#">O14965</a>
Pathways:	<a href="#">Cell Division Cycle</a> , <a href="#">Asymmetric Protein Localization</a>

## Application Details

Application Notes:	Approved: IHC, IHC-P (5 µg/mL), WB  Usage: ELISA titer using peptide based assay: 1:62500. Western Blot: Suggested dilution at 1 µg/mL in 5 % skim milk / PBS buffer, and HRP conjugated anti-Rabbit IgG should be diluted in 1:50000 - 100000 as second antibody.
Comment:	Target Species of Antibody: Human
Restrictions:	For Research Use only

## Handling

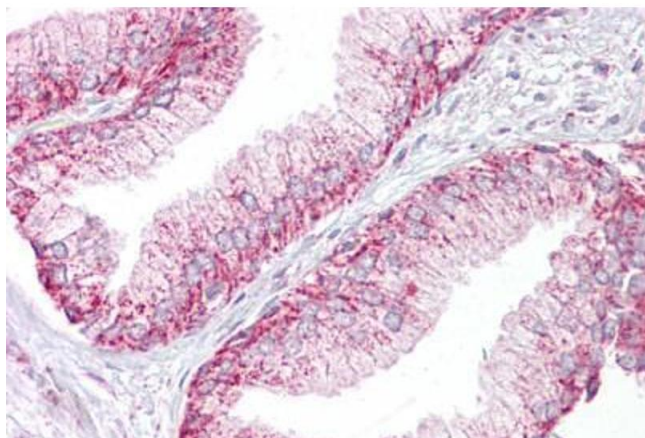
Format:	Lyophilized
Reconstitution:	Distilled Water.
Concentration:	Lot specific
Buffer:	Lyophilized from PBS with 2 % sucrose
Handling Advice:	Avoid repeat freeze-thaw cycles.

## Handling

Storage: 4 °C, -20 °C

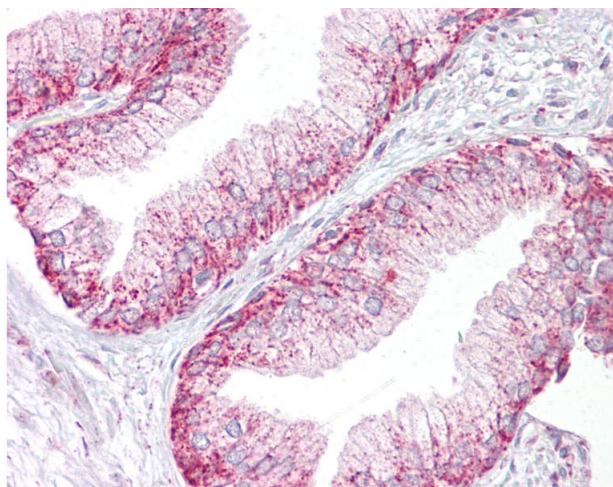
Storage Comment: Long term: -20°C, the use of 50% glycerol is recommended if storing aliquots in -20°C for long term use (up to 1 year)  
Short term (less than 1 week): 4°C. Avoid freeze-thaw cycles.

## Images



### Immunohistochemistry

**Image 1.** Anti-AURKA / Aurora-A antibody IHC staining of human prostate. Immunohistochemistry of formalin-fixed, paraffin-embedded tissue after heat-induced antigen retrieval. Antibody ABIN958381 concentration 5 ug/ml.



### Immunohistochemistry

**Image 2.** Anti-AURKA / Aurora-A antibody IHC of human prostate. Immunohistochemistry of formalin-fixed, paraffin-embedded tissue after heat-induced antigen retrieval. Antibody concentration 5 ug/ml. This image was taken for the unconjugated form of this produ ...