

Datasheet for ABIN6748559  
**anti-PURA antibody (AA 108-157)**[Go to Product page](#)

## 2 Images

## Overview

Quantity:	100 µL
Target:	PURA
Binding Specificity:	AA 108-157
Reactivity:	Human, Mouse, Rat, Cow, Dog, Rabbit, Sheep, Guinea Pig, Monkey, Pig, Bat
Host:	Rabbit
Clonality:	Polyclonal
Conjugate:	This PURA antibody is un-conjugated
Application:	Western Blotting (WB), Immunohistochemistry (IHC), Immunohistochemistry (Paraffin-embedded Sections) (IHC (p))

## Product Details

Brand:	IHC-plus™
Immunogen:	Synthetic peptide located between aa108-157 of human PURA (Q00577, NP_005850). Percent identity by BLAST analysis: Human, Chimpanzee, Gorilla, Gibbon, Monkey, Galago, Marmoset, Mouse, Rat, Sheep, Panda, Dog, Bovine, Bat, Rabbit, Pig, Opossum, Guinea pig (100%), Zebra finch (92%).  Type of Immunogen: Synthetic peptide
Isotype:	IgG
Specificity:	Human PURA
Predicted Reactivity:	Percent identity by BLAST analysis: Human, Mouse, Rat, Sheep, Dog, Bovine, Rabbit, Guinea pig

## Product Details

(100%).

Purification: Immunoaffinity purified

## Target Details

Target: PURA

Alternative Name: PURALPHA / PURA ([PURA Products](#))

Background: Name/Gene ID: PURA

Synonyms: PURA, PUR-ALPHA, PURALPHA, PUR1

Gene ID: 5813

NCBI Accession: [NP\\_005850](#)

UniProt: [Q00577](#)

## Application Details

Application Notes: Approved: IHC, IHC-P (5 µg/mL), WB (0.2 - 1 µg/mL)

Usage: Western Blot: Suggested dilution at 1 µg/mL in 5 % skim milk / PBS buffer, and HRP conjugated anti-Rabbit IgG should be diluted in 1: 50,000 - 100,000 as second antibody. ELISA titer in peptide based assay: 1:62500.

Comment: Target Species of Antibody: Human

Restrictions: For Research Use only

## Handling

Format: Lyophilized

Reconstitution: Distilled water

Concentration: Lot specific

Buffer: Lyophilized from PBS with 2 % sucrose

Handling Advice: Avoid repeat freeze-thaw cycles.

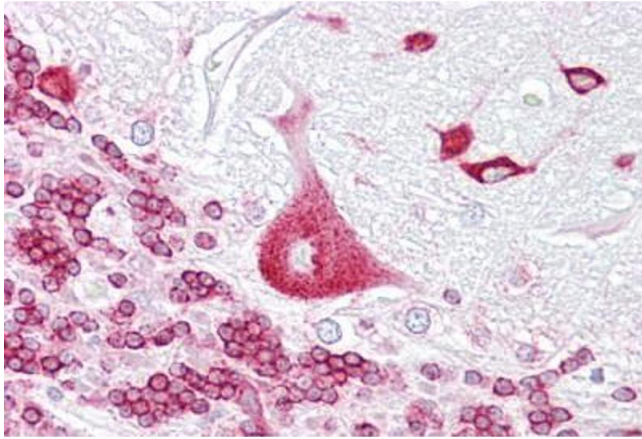
Storage: 4 °C, -20 °C

Storage Comment: Long term: -20°C, the use of 50% glycerol is recommended if storing aliquots in -20°C for long

term use (up to 1 year)

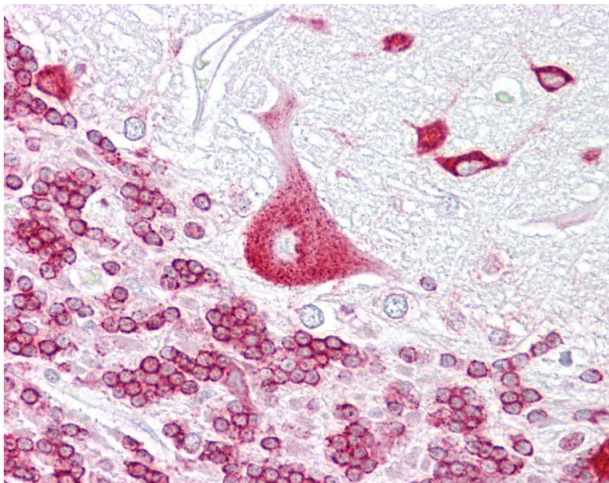
Short term (less than 1 week): 4°C. Avoid freeze-thaw cycles.

## Images



### Immunohistochemistry

**Image 1.** Anti-PURA antibody IHC staining of human brain, cerebellum. Immunohistochemistry of formalin-fixed, paraffin-embedded tissue after heat-induced antigen retrieval. Antibody ABIN958320 concentration 5 ug/ml.



### Immunohistochemistry

**Image 2.** Anti-PURA antibody IHC of human brain, cerebellum. Immunohistochemistry of formalin-fixed, paraffin-embedded tissue after heat-induced antigen retrieval. Antibody concentration 5 ug/ml. This image was taken for the unconjugated form of this product. ...