



[Go to Product page](#)

Datasheet for ABIN6748560
anti-TCEA1 antibody (AA 71-120)

2 Images

Overview

Quantity:	100 µL
Target:	TCEA1
Binding Specificity:	AA 71-120
Reactivity:	Human, Mouse, Rat, Dog, Guinea Pig, Horse, Monkey, Pig
Host:	Rabbit
Clonality:	Polyclonal
Conjugate:	This TCEA1 antibody is un-conjugated
Application:	Western Blotting (WB), Immunohistochemistry (IHC), Immunohistochemistry (Paraffin-embedded Sections) (IHC (p))

Product Details

Brand:	IHC-plus™
Immunogen:	Synthetic peptide located between aa71-120 of human TCEA1 (P23193, NP_006747). Percent identity by BLAST analysis: Human, Chimpanzee, Gorilla, Gibbon, Marmoset, Rat (100%), Galago, Elephant, Opossum (92%), Mouse, Guinea pig (85%). Type of Immunogen: Synthetic peptide
Isotype:	IgG
Specificity:	Human TCEA1
Predicted Reactivity:	Percent identity by BLAST analysis: Human (100%) Mouse, Rat, Guinea pig (85%).
Purification:	Immunoaffinity purified

Target Details

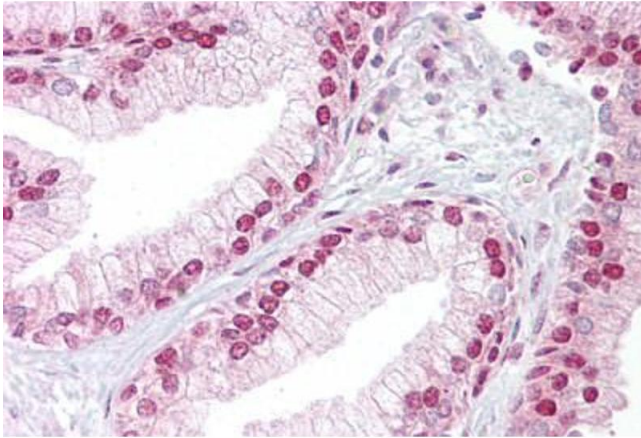
Target:	TCEA1
Alternative Name:	TCEA1 / TFIIS (TCEA1 Products)
Background:	Name/Gene ID: TCEA1 Synonyms: TCEA1, GTF2S, SII, TCEA, TFIIS
Gene ID:	6917
NCBI Accession:	NP_006747
UniProt:	P23193

Application Details

Application Notes:	Approved: IHC, IHC-P (5 µg/mL), WB (0.2 - 1 µg/mL)
Comment:	Target Species of Antibody: Human
Restrictions:	For Research Use only

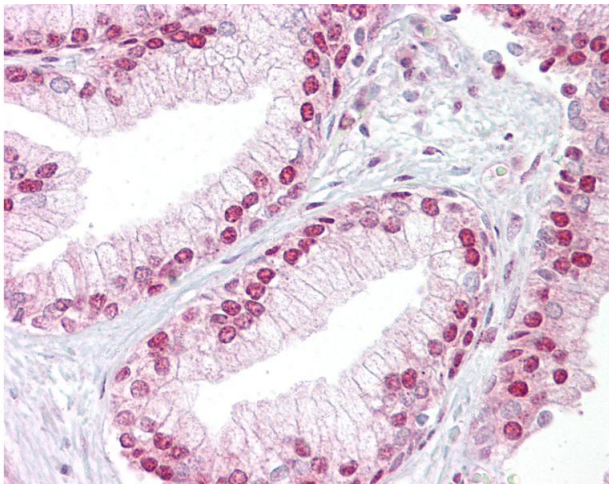
Handling

Format:	Lyophilized
Reconstitution:	After adding water, will consist of PBS buffer with 2 % sucrose
Concentration:	Lot specific
Buffer:	Lyophilized from PBS with 2 % sucrose
Handling Advice:	Avoid repeat freeze-thaw cycles.
Storage:	4 °C, -20 °C
Storage Comment:	Long term: -20°C, the use of 50% glycerol is recommended if storing aliquots in -20°C for long term use (up to 1 year) Short term (less than 1 week): 4°C. Avoid freeze-thaw cycles.



Immunohistochemistry

Image 1. Anti-TCEA1 antibody IHC staining of human prostate. Immunohistochemistry of formalin-fixed, paraffin-embedded tissue after heat-induced antigen retrieval. Antibody ABIN959065 concentration 5 ug/ml.



Immunohistochemistry

Image 2. Anti-TCEA1 antibody IHC of human prostate. Immunohistochemistry of formalin-fixed, paraffin-embedded tissue after heat-induced antigen retrieval. Antibody concentration 5 ug/ml. This image was taken for the unconjugated form of this product. Other f ...