

Datasheet for ABIN6748562
anti-TIMELESS antibody (AA 290-339)[Go to Product page](#)

2 Images

Overview

Quantity:	100 µL
Target:	TIMELESS
Binding Specificity:	AA 290-339
Reactivity:	Human, Mouse, Rat, Dog, Horse, Guinea Pig, Pig, Rabbit
Host:	Rabbit
Clonality:	Polyclonal
Conjugate:	This TIMELESS antibody is un-conjugated
Application:	Western Blotting (WB), Immunohistochemistry (IHC), Immunohistochemistry (Paraffin-embedded Sections) (IHC (p))

Product Details

Brand:	IHC-plus™
Immunogen:	Synthetic peptide located between aa290-339 of human TIMELESS (Q9UNS1, NP_003911). Percent identity by BLAST analysis: Human, Chimpanzee, Gorilla, Monkey (100%), Gibbon, Marmoset (92%), Bovine (91%), Mouse, Rat, Dog, Bat, Horse, Pig (84%). Type of Immunogen: Synthetic peptide
Isotype:	IgG
Specificity:	Human TIMELESS
Predicted Reactivity:	Percent identity by BLAST analysis: Human (100%) Bovine (91%) Mouse, Rat, Dog, Horse, Pig (84%).

Product Details

Purification: Immunoaffinity purified

Target Details

Target: TIMELESS

Alternative Name: TIMELESS / TIM ([TIMELESS Products](#))

Background: Name/Gene ID: TIMELESS

Synonyms: TIMELESS, Timeless (Drosophila) homolog, Timeless circadian clock, TIMELESS1, TIM1, Protein timeless homolog, HTIM, TIM, Timeless homolog (Drosophila), Tof1 homolog

Gene ID: 8914

NCBI Accession: [NP_003911](#)

UniProt: [Q9UNS1](#)

Pathways: [Protein targeting to Nucleus](#), [Photoperiodism](#)

Application Details

Application Notes: Approved: IHC, IHC-P (5 µg/mL), WB (0.2 - 1 µg/mL)

Comment: Target Species of Antibody: Human

Restrictions: For Research Use only

Handling

Format: Lyophilized

Reconstitution: After adding water, will consist of PBS buffer with 2 % sucrose

Concentration: Lot specific

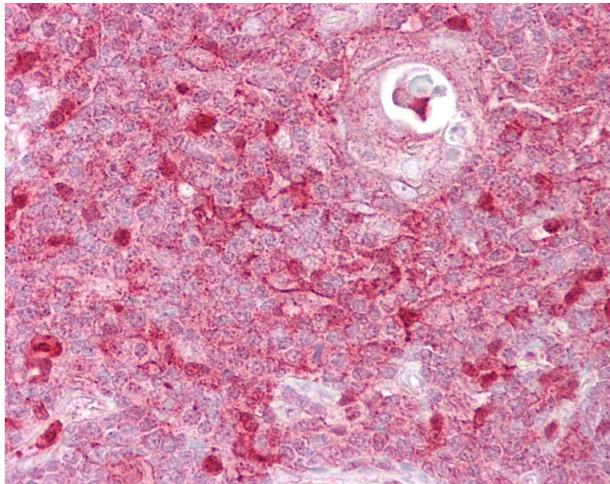
Buffer: Lyophilized from PBS with 2 % sucrose

Handling Advice: Avoid repeat freeze-thaw cycles.

Storage: 4 °C, -20 °C

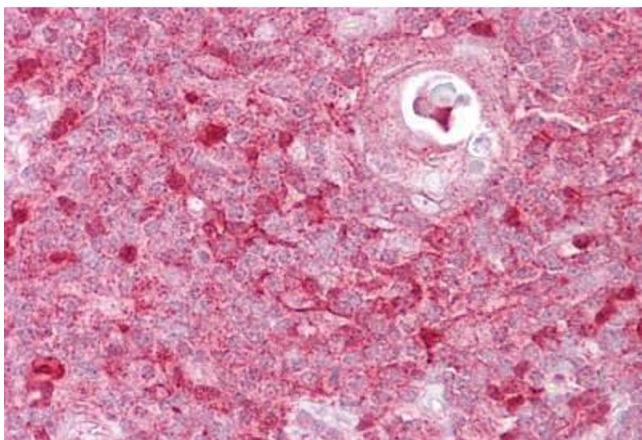
Storage Comment: Long term: -20°C, the use of 50% glycerol is recommended if storing aliquots in -20°C for long term use (up to 1 year)

Short term (less than 1 week): 4°C. Avoid freeze-thaw cycles.



Immunohistochemistry

Image 1. Anti-TIMELESS antibody IHC of human thymus. Immunohistochemistry of formalin-fixed, paraffin-embedded tissue after heat-induced antigen retrieval. Antibody concentration 5 ug/ml. This image was taken for the unconjugated form of this product. Other ...



Immunohistochemistry

Image 2. Anti-TIMELESS antibody IHC staining of human thymus. Immunohistochemistry of formalin-fixed, paraffin-embedded tissue after heat-induced antigen retrieval. Antibody ABIN959067 concentration 5 ug/ml.