

Datasheet for ABIN6748565
anti-KCNQ2 antibody (AA 171-220)

2 Images

[Go to Product page](#)

Overview

| | |
|----------------------|--|
| Quantity: | 100 µL |
| Target: | KCNQ2 |
| Binding Specificity: | AA 171-220 |
| Reactivity: | Human, Rat, Mouse, Dog, Cow, Guinea Pig, Horse, Bat, Chicken, Monkey |
| Host: | Rabbit |
| Clonality: | Polyclonal |
| Conjugate: | This KCNQ2 antibody is un-conjugated |
| Application: | Western Blotting (WB), Immunohistochemistry (IHC), Immunohistochemistry (Paraffin-embedded Sections) (IHC (p)) |

Product Details

| | |
|--------------|--|
| Brand: | IHC-plus™ |
| Immunogen: | Synthetic peptide located between aa171-220 of human KCNQ2 (Q53Y30, NP_742107). Percent identity by BLAST analysis: Human, Chimpanzee, Gorilla, Monkey, Galago, Marmoset, Mouse, Rat, Elephant, Panda, Dog, Bovine, Bat, Horse, Opossum, Guinea pig, Turkey, Zebra finch, Chicken, Platypus, Lizard (100%), Gibbon, Rabbit, Pig, Armadillo, Zebrafish (92%), Xenopus, Stickleback, Drosophila (85%). Type of Immunogen: Synthetic peptide |
| Isotype: | IgG |
| Specificity: | Human KCNQ2 |

Product Details

Predicted Reactivity: Percent identity by BLAST analysis: Human, Mouse, Rat, Dog, Bovine, Horse, Chicken (100%)
Zebrafish (92%).

Purification: Immunoaffinity purified

Target Details

Target: KCNQ2

Alternative Name: KCNQ2 ([KCNQ2 Products](#))

Background: Name/Gene ID: KCNQ2
Subfamily: Potassium channel - KCNQ
Family: Ion Channel

Synonyms: KCNQ2, BFNS1, BFNC, EBN, EBN1, EIEE7, HNSPC, KQT2, KV7.2, KCNA11, KQT-like 2, ENB1, KVEBN1

Gene ID: 3785

NCBI Accession: [NP_742107](#)

UniProt: [O43526](#)

Application Details

Application Notes: Approved: IHC, IHC-P (5 µg/mL), WB

Usage: ELISA titer using peptide based assay: 1:62500. Western Blot: Suggested dilution at 0.5 µg/mL in 5 % skim milk / PBS buffer, and HRP conjugated anti-Rabbit IgG should be diluted in 1:50000 - 100000 as second antibody.

Comment: Target Species of Antibody: Human

Restrictions: For Research Use only

Handling

Format: Lyophilized

Reconstitution: Distilled Water.

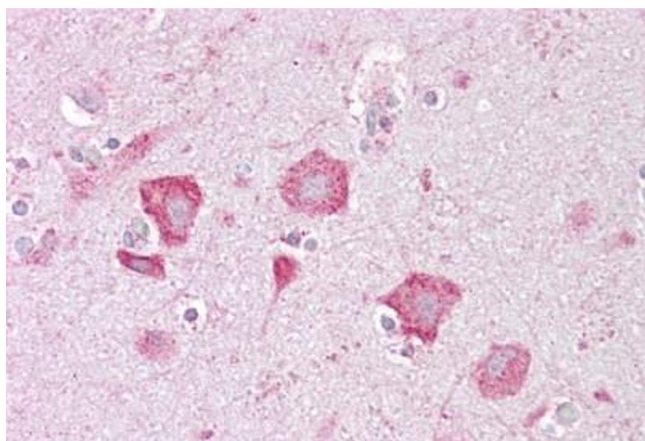
Concentration: Lot specific

Buffer: Lyophilized from PBS with 2 % sucrose

Handling

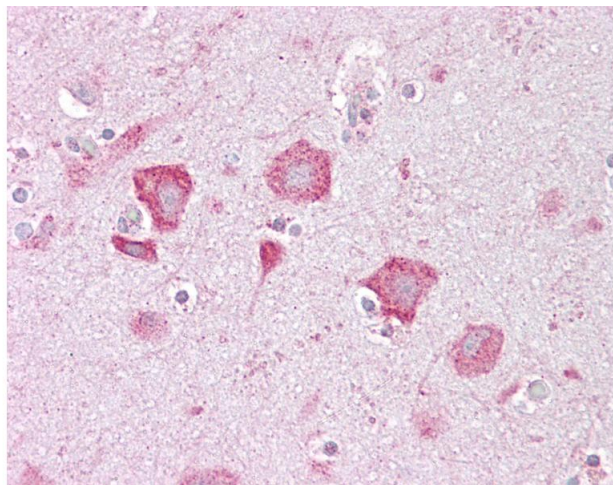
| | |
|------------------|---|
| Handling Advice: | Avoid repeat freeze-thaw cycles. |
| Storage: | 4 °C,-20 °C |
| Storage Comment: | Long term: -20°C, the use of 50% glycerol is recommended if storing aliquots in -20°C for long term use (up to 1 year) Short term (less than 1 week): 4°C. Avoid freeze-thaw cycles. |

Images



Immunohistochemistry

Image 1. Anti-KCNQ2 antibody IHC staining of human brain, cortex. Immunohistochemistry of formalin-fixed, paraffin-embedded tissue after heat-induced antigen retrieval. Antibody ABIN958389 concentration 5 ug/ml.



Immunohistochemistry

Image 2. Anti-KCNQ2 antibody IHC of human brain, cortex. Immunohistochemistry of formalin-fixed, paraffin-embedded tissue after heat-induced antigen retrieval. Antibody concentration 5 ug/ml. This image was taken for the unconjugated form of this product. Ot ...