

Datasheet for ABIN6748568
anti-MCM3 antibody (AA 696-745)

2 Images

[Go to Product page](#)

Overview

| | |
|----------------------|--|
| Quantity: | 100 µL |
| Target: | MCM3 |
| Binding Specificity: | AA 696-745 |
| Reactivity: | Human, Monkey, Cow, Guinea Pig |
| Host: | Rabbit |
| Clonality: | Polyclonal |
| Conjugate: | This MCM3 antibody is un-conjugated |
| Application: | Western Blotting (WB), Immunohistochemistry (IHC), Immunohistochemistry (Paraffin-embedded Sections) (IHC (p)) |

Product Details

| | |
|-----------------------|---|
| Brand: | IHC-plus™ |
| Immunogen: | Synthetic peptide located between aa696-745 of human MCM3 (NP_002379). Percent identity by BLAST analysis: Human, Chimpanzee, Gorilla, Orangutan, Gibbon, Monkey, Marmoset, Bovine, Guinea pig (100%), Galago, Mouse, Rat, Hamster, Horse (92%), Elephant, Bat (85%). Type of Immunogen: Synthetic peptide |
| Isotype: | IgG |
| Specificity: | Human MCM3 |
| Predicted Reactivity: | Percent identity by BLAST analysis: Human, Bovine (100%) Mouse, Rat, Horse (92%). |
| Purification: | Immunoaffinity purified |

Target Details

| | |
|-------------------|---|
| Target: | MCM3 |
| Alternative Name: | MCM3 (MCM3 Products) |
| Background: | Name/Gene ID: MCM3 Synonyms: MCM3, DNA replication factor MCM3, HCC5, HRIf beta subunit, p1-MCM3, RLF subunit beta, RLFB, p102, p1.h |
| Gene ID: | 4172 |
| NCBI Accession: | NP_002379 |
| UniProt: | P25205 |
| Pathways: | DNA Damage Repair , Mitotic G1-G1/S Phases , DNA Replication , Chromatin Binding , Synthesis of DNA |

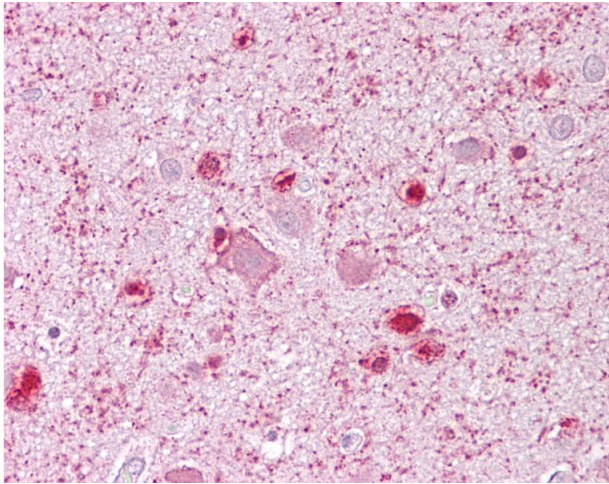
Application Details

| | |
|--------------------|---|
| Application Notes: | Approved: IHC, IHC-P (5 µg/mL), WB Usage: ELISA titer using peptide based assay: 1:312500. Western Blot: Suggested dilution at 1 µg/mL in 5 % skim milk / PBS buffer, and HRP conjugated anti-Rabbit IgG should be diluted in 1:50000 - 100000 as second antibody. |
| Comment: | Target Species of Antibody: Human |
| Restrictions: | For Research Use only |

Handling

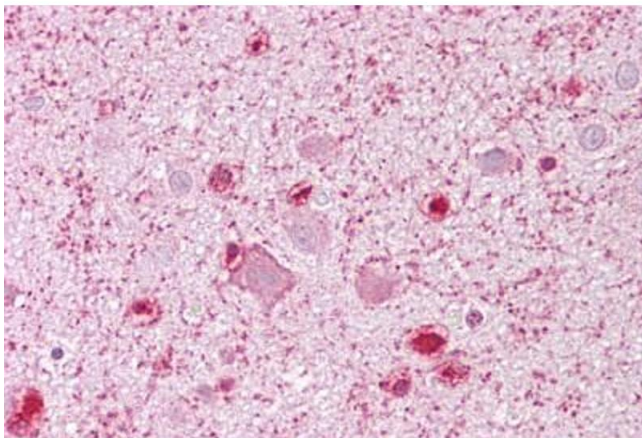
| | |
|------------------|--|
| Format: | Lyophilized |
| Reconstitution: | Distilled Water. |
| Concentration: | Lot specific |
| Buffer: | Lyophilized from PBS with 2 % sucrose |
| Handling Advice: | Avoid repeat freeze-thaw cycles. |
| Storage: | 4 °C,-20 °C |
| Storage Comment: | Long term: -20°C, the use of 50% glycerol is recommended if storing aliquots in -20°C for long term use (up to 1 year) |

Short term (less than 1 week): 4°C. Avoid freeze-thaw cycles.



Immunohistochemistry

Image 1. Anti-MCM3 antibody IHC of human brain, cortex. Immunohistochemistry of formalin-fixed, paraffin-embedded tissue after heat-induced antigen retrieval. Antibody concentration 5 ug/ml. This image was taken for the unconjugated form of this product. Oth ...



Immunohistochemistry

Image 2. Anti-MCM3 antibody IHC staining of human brain, cortex. Immunohistochemistry of formalin-fixed, paraffin-embedded tissue after heat-induced antigen retrieval. Antibody ABIN958391 concentration 5 ug/ml.