

Datasheet for ABIN6748569
anti-MCM3 antibody (AA 726-775)[Go to Product page](#)

2 Images

Overview

Quantity:	100 µL
Target:	MCM3
Binding Specificity:	AA 726-775
Reactivity:	Human, Horse, Monkey
Host:	Rabbit
Clonality:	Polyclonal
Conjugate:	This MCM3 antibody is un-conjugated
Application:	Western Blotting (WB), Immunohistochemistry (IHC), Immunohistochemistry (Paraffin-embedded Sections) (IHC (p))

Product Details

Brand:	IHC-plus™
Immunogen:	Synthetic peptide located between aa726-775 of human MCM3 (P25205, NP_002379). Percent identity by BLAST analysis: Human, Chimpanzee, Gorilla, Orangutan, Gibbon, Monkey, Galago, Marmoset, Horse (100%), Mouse, Rat, Elephant, Dog, Bovine, Bat, Rabbit, Guinea pig (92%). Type of Immunogen: Synthetic peptide
Isotype:	IgG
Specificity:	Human MCM3
Predicted Reactivity:	Percent identity by BLAST analysis: Human, Horse (100%) Mouse, Rat, Dog, Bovine, Rabbit (92%).

Product Details

Purification: Immunoaffinity purified

Target Details

Target: MCM3

Alternative Name: MCM3 ([MCM3 Products](#))

Background: Name/Gene ID: MCM3

Synonyms: MCM3, DNA replication factor MCM3, HCC5, HRif beta subunit, p1-MCM3, RLF subunit beta, RLFB, p102, p1.h

Gene ID: 4172

NCBI Accession: [NP_002379](#)

UniProt: [P25205](#)

Pathways: [DNA Damage Repair](#), [Mitotic G1-G1/S Phases](#), [DNA Replication](#), [Chromatin Binding](#), [Synthesis of DNA](#)

Application Details

Application Notes: Approved: IHC, IHC-P (5 µg/mL), WB (0.2 - 1 µg/mL)

Comment: Target Species of Antibody: Human

Restrictions: For Research Use only

Handling

Format: Lyophilized

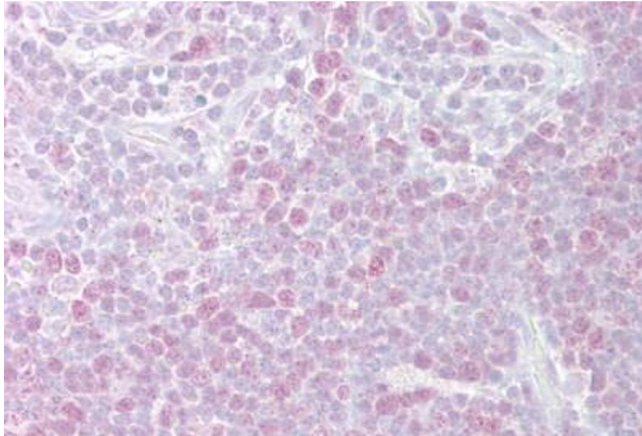
Reconstitution: After adding water, will consist of PBS buffer with 2 % sucrose

Concentration: Lot specific

Buffer: Lyophilized from PBS with 2 % sucrose

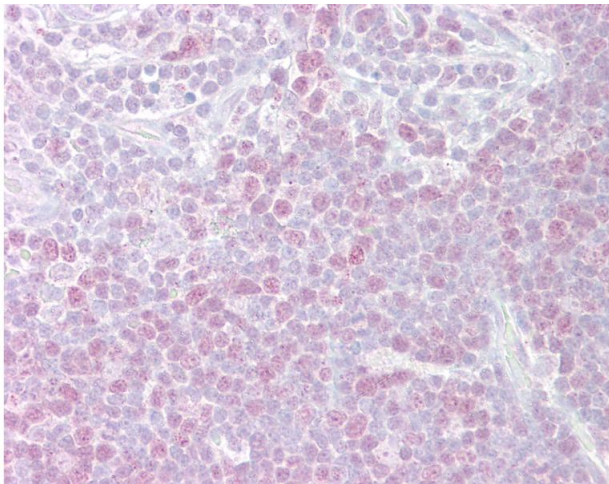
Storage: 4 °C, -20 °C

Storage Comment: Long term: -20°C, the use of 50% glycerol is recommended if storing aliquots in -20°C for long term use (up to 1 year)
Short term (less than 1 week): 4°C. Avoid freeze-thaw cycles.



Immunohistochemistry

Image 1. Anti-MCM3 antibody IHC staining of human thymus. Immunohistochemistry of formalin-fixed, paraffin-embedded tissue after heat-induced antigen retrieval. Antibody ABIN959061 concentration 5 ug/ml.



Immunohistochemistry

Image 2. Anti-MCM3 antibody IHC of human thymus. Immunohistochemistry of formalin-fixed, paraffin-embedded tissue after heat-induced antigen retrieval. Antibody concentration 5 ug/ml. This image was taken for the unconjugated form of this product. Other form ...