

Datasheet for ABIN6748570
anti-MCM6 antibody (C-Term)[Go to Product page](#)

2 Images

Overview

Quantity:	100 µL
Target:	MCM6
Binding Specificity:	C-Term
Reactivity:	Human, Dog, Cow, Guinea Pig, Horse, Rabbit
Host:	Rabbit
Clonality:	Polyclonal
Conjugate:	This MCM6 antibody is un-conjugated
Application:	Western Blotting (WB), Immunohistochemistry (IHC), Immunohistochemistry (Paraffin-embedded Sections) (IHC (p))

Product Details

Brand:	IHC-plus™
Immunogen:	Synthetic peptide from C-Terminus of human MCM6 (Q14566, NP_005906). Percent identity by BLAST analysis: Human, Chimpanzee, Gorilla, Gibbon, Monkey, Galago, Panda, Dog, Bovine, Rabbit, Horse, Guinea pig (100%), Marmoset, Mouse, Rat, Bat (92%), Elephant, Opossum (85%). Type of Immunogen: Synthetic peptide
Isotype:	IgG
Specificity:	Human MCM6
Predicted Reactivity:	Percent identity by BLAST analysis: Human, Dog, Bovine, Rabbit (100%) Mouse, Rat (92%).
Purification:	Immunoaffinity purified

Target Details

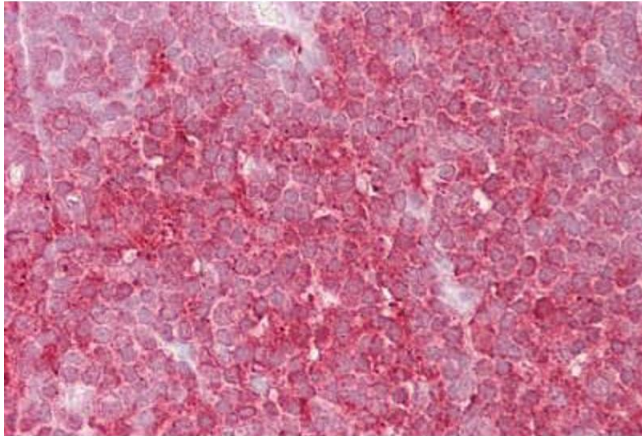
Target:	MCM6
Alternative Name:	MCM6 (MCM6 Products)
Background:	Name/Gene ID: MCM6 Synonyms: MCM6, Mis5, MCG40308, p105MCM
Gene ID:	4175
NCBI Accession:	NP_005906
UniProt:	Q14566
Pathways:	DNA Damage Repair , Mitotic G1-G1/S Phases , DNA Replication , Synthesis of DNA

Application Details

Application Notes:	Approved: IHC, IHC-P (5 µg/mL), WB (0.2 - 1 µg/mL)
Comment:	Target Species of Antibody: Human
Restrictions:	For Research Use only

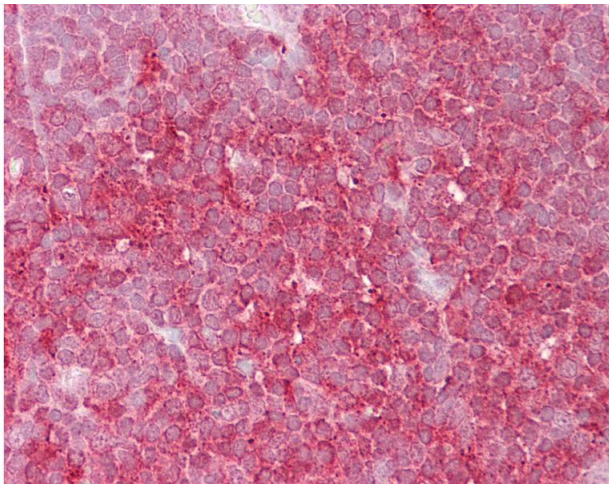
Handling

Format:	Lyophilized
Reconstitution:	After adding water, will consist of PBS buffer with 2 % sucrose
Concentration:	Lot specific
Buffer:	Lyophilized from PBS with 2 % sucrose
Handling Advice:	Avoid repeat freeze-thaw cycles.
Storage:	4 °C, -20 °C
Storage Comment:	Long term: -20°C, the use of 50% glycerol is recommended if storing aliquots in -20°C for long term use (up to 1 year) Short term (less than 1 week): 4°C. Avoid freeze-thaw cycles.



Immunohistochemistry

Image 1. Anti-MCM6 antibody IHC staining of human thymus. Immunohistochemistry of formalin-fixed, paraffin-embedded tissue after heat-induced antigen retrieval. Antibody ABIN959062 concentration 5 ug/ml.



Immunohistochemistry

Image 2. Anti-MCM6 antibody IHC of human thymus. Immunohistochemistry of formalin-fixed, paraffin-embedded tissue after heat-induced antigen retrieval. Antibody concentration 5 ug/ml. This image was taken for the unconjugated form of this product. Other form ...