



Datasheet for ABIN6748580  
**anti-GRHL3 antibody (AA 431-480)**



[Go to Product page](#)

2 Images

Overview

Quantity:	100 µL
Target:	GRHL3
Binding Specificity:	AA 431-480
Reactivity:	Human, Mouse, Dog, Cow, Guinea Pig, Horse, Rabbit, Monkey
Host:	Rabbit
Clonality:	Polyclonal
Conjugate:	This GRHL3 antibody is un-conjugated
Application:	Western Blotting (WB), Immunohistochemistry (IHC), Immunohistochemistry (Paraffin-embedded Sections) (IHC (p))

Product Details

Brand:	IHC-plus™
Immunogen:	Synthetic peptide located between aa431-480 of human GRHL3 (Q8TE85-4, NP_937817). Percent identity by BLAST analysis: Human, Chimpanzee, Gorilla, Gibbon, Monkey, Galago, Elephant, Dog, Bovine, Rabbit, Horse (100%), Rat, Bat, Pig, Opossum (92%), Mouse, Guinea pig, Turkey, Chicken (85%).  Type of Immunogen: Synthetic peptide
Specificity:	Human GRHL3
Predicted Reactivity:	Percent identity by BLAST analysis: Human, Dog, Bovine, Rabbit, Horse (100%) Rat, Pig (92%) Mouse, Guinea pig, Chicken (85%).

## Product Details

---

Purification: Immunoaffinity purified

## Target Details

---

Target: GRHL3

Alternative Name: GRHL3 ([GRHL3 Products](#))

Background: Name/Gene ID: GRHL3

Synonyms: GRHL3, Grainyhead-like 3 (Drosophila), Sister of mammalian grainyhead, Sister-of-mammalian grainyhead, TFCP2L4, Transcription factor hSOM1, SOM

Gene ID: 57822

NCBI Accession: [NP\\_937817](#)

UniProt: [Q8TE85](#)

## Application Details

---

Application Notes: Approved: IHC, IHC-P (5 µg/mL), WB (0.2 - 1 µg/mL)

Comment: Target Species of Antibody: Human

Restrictions: For Research Use only

## Handling

---

Format: Lyophilized

Reconstitution: Distilled water

Concentration: Lot specific

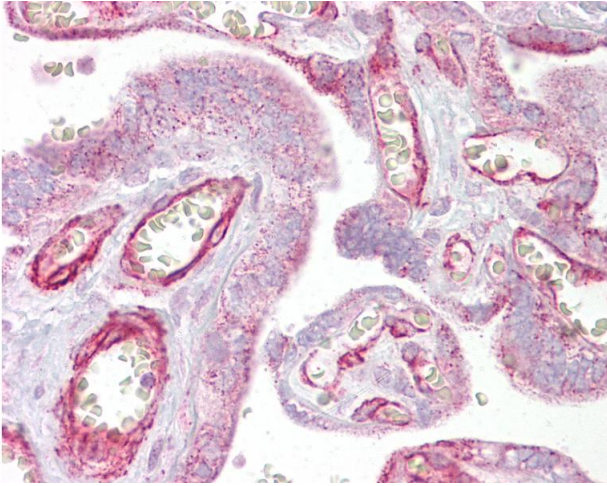
Buffer: Lyophilized from PBS with 2 % sucrose

Handling Advice: Avoid repeat freeze-thaw cycles.

Storage: 4 °C, -20 °C

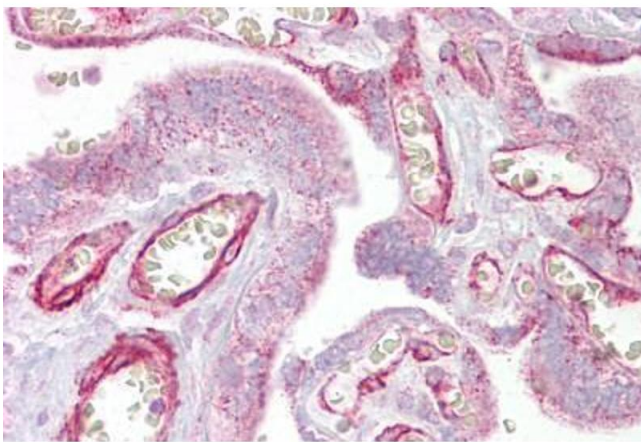
Storage Comment: Long term: -20°C, the use of 50% glycerol is recommended if storing aliquots in -20°C for long term use (up to 1 year)

Short term (less than 1 week): 4°C. Avoid freeze-thaw cycles.



#### Immunohistochemistry

**Image 1.** Anti-GRHL3 antibody IHC of human placenta. Immunohistochemistry of formalin-fixed, paraffin-embedded tissue after heat-induced antigen retrieval. Antibody concentration 5 ug/ml. This image was taken for the unconjugated form of this product. Other f ...



#### Immunohistochemistry

**Image 2.** Anti-GRHL3 antibody IHC staining of human placenta. Immunohistochemistry of formalin-fixed, paraffin-embedded tissue after heat-induced antigen retrieval. Antibody ABIN959056 concentration 5 ug/ml.