



Datasheet for ABIN6748584
anti-GNB2L1 antibody (AA 71-120)



[Go to Product page](#)

1 Image

Overview

Quantity:	100 µL
Target:	GNB2L1
Binding Specificity:	AA 71-120
Reactivity:	Human, Mouse, Rat, Dog, Cow, Sheep, Rabbit, Guinea Pig, Zebrafish (Danio rerio), Chicken, Xenopus laevis, Pig, Bat, Monkey
Host:	Rabbit
Clonality:	Polyclonal
Conjugate:	This GNB2L1 antibody is un-conjugated
Application:	Western Blotting (WB), Immunohistochemistry (IHC), Immunohistochemistry (Paraffin-embedded Sections) (IHC (p))

Product Details

Brand:	IHC-plus™
Immunogen:	Synthetic peptide located between aa71-120 of human GNB2L1 (P63244, NP_006089). Percent identity by BLAST analysis: Human, Chimpanzee, Gorilla, Gibbon, Monkey, Marmoset, Mouse, Rat, Sheep, Elephant, Dog, Bovine, Bat, Rabbit, Pig, Opossum, Guinea pig, Turkey, Chicken, Platypus, Lizard, Xenopus, Trout, Catfish, Salmon, Smelt, Pike, Zebrafish (100%), Rice, Arabidopsis (92%), Grape (83%). Type of Immunogen: Synthetic peptide
Specificity:	Human GNB2L1 / RACK1

Product Details

Predicted Reactivity:	Percent identity by BLAST analysis: Human, Dog, Bovine, Guinea pig, Chicken, Xenopus, Zebrafish (100%).
Purification:	Immunoaffinity purified

Target Details

Target:	GNB2L1
Alternative Name:	GNB2L1 / RACK1 (GNB2L1 Products)
Background:	Name/Gene ID: RACK1 Synonyms: RACK1, H12.3, Gnb2-rs1, Proliferation-inducing gene 21, GNB2L1, HLC-7, Lung cancer oncogene 7, PIG21
Gene ID:	10399
NCBI Accession:	NP_006089
UniProt:	P63244
Pathways:	cAMP Metabolic Process , Positive Regulation of Endopeptidase Activity

Application Details

Application Notes:	Approved: IHC, IHC-P (5 µg/mL), WB (0.2 - 1 µg/mL) Usage: Western Blot: Suggested dilution at 1 µg/mL in 5 % skim milk / PBS buffer, and HRP conjugated anti-Rabbit IgG should be diluted in 1: 50,000 - 100,000 as secondary antibody.
Comment:	Target Species of Antibody: Human
Restrictions:	For Research Use only

Handling

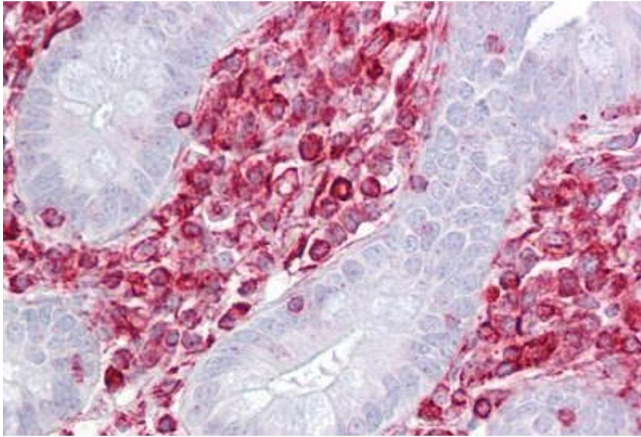
Format:	Lyophilized
Reconstitution:	Distilled water
Concentration:	Lot specific
Buffer:	Lyophilized from PBS with 2 % sucrose
Handling Advice:	Avoid repeat freeze-thaw cycles.

Handling

Storage: 4 °C,-20 °C

Storage Comment: Long term: -20°C, the use of 50% glycerol is recommended if storing aliquots in -20°C for long term use (up to 1 year)
Short term (less than 1 week): 4°C. Avoid freeze-thaw cycles.

Images



Immunohistochemistry

Image 1. Anti-RACK1 antibody IHC staining of human small intestine. Immunohistochemistry of formalin-fixed, paraffin-embedded tissue after heat-induced antigen retrieval. Antibody ABIN958988 concentration 5 ug/ml.