

Datasheet for ABIN6748589

## anti-Cadherin-16 antibody (AA 151-200)



[Go to Product page](#)

### 1 Image

#### Overview

Quantity:	100 µL
Target:	Cadherin-16 (CDH16)
Binding Specificity:	AA 151-200
Reactivity:	Human, Rat, Dog
Host:	Rabbit
Clonality:	Polyclonal
Conjugate:	This Cadherin-16 antibody is un-conjugated
Application:	Western Blotting (WB), Immunohistochemistry (IHC), Immunohistochemistry (Paraffin-embedded Sections) (IHC (p))

#### Product Details

Brand:	IHC-plus™
Immunogen:	Synthetic peptide located between aa151-200 of human CDH16 (075309, NP_004053). Percent identity by BLAST analysis: Human, Gorilla, Galago, Marmoset, Rat (100%), Monkey, Mouse, Elephant, Bovine, Bat, Rabbit, Horse, Guinea pig (92%), Orangutan, Gibbon, Panda, Dog, Opossum (85%).  Type of Immunogen: Synthetic peptide
Isotype:	IgG
Specificity:	Human CDH16 / Cadherin 16
Predicted Reactivity:	Percent identity by BLAST analysis: Human, Rat (100%) Mouse, Bovine, Horse, Guinea pig (92%)

## Product Details

	Dog (85%).
Purification:	Immunoaffinity purified

## Target Details

Target:	Cadherin-16 (CDH16)
Alternative Name:	CDH16 / Cadherin 16 ( <a href="#">CDH16 Products</a> )
Background:	Name/Gene ID: CDH16 Family: Cadherin  Synonyms: CDH16, Cadherin 16, KSP-cadherin, Cadherin 16, Cadherin-16, Kidney-specific cadherin, KSP-cadherin
Gene ID:	1014
NCBI Accession:	<a href="#">NP_004053</a>
UniProt:	<a href="#">O75309</a>

## Application Details

Application Notes:	Approved: IHC, IHC-P (5 µg/mL), WB (1 µg/mL)  Usage: ELISA titer using peptide based assay: 1:62500. Western Blot: Suggested dilution at 1 µg/mL in 5 % skim milk / PBS buffer, and HRP conjugated anti-Rabbit IgG should be diluted in 1:50000 - 100000 as second antibody.
Comment:	Target Species of Antibody: Human
Restrictions:	For Research Use only

## Handling

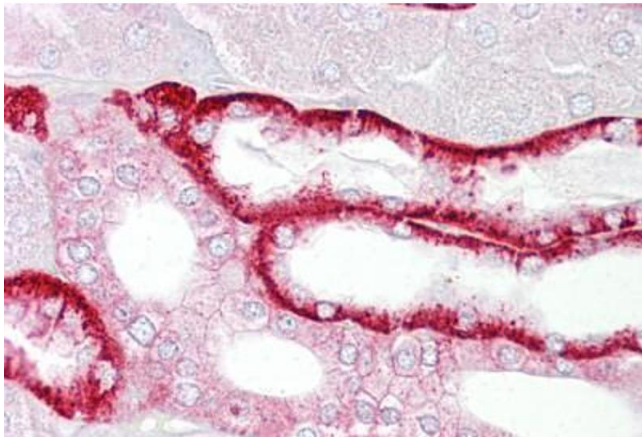
Format:	Lyophilized
Reconstitution:	Distilled Water.
Concentration:	Lot specific
Buffer:	Lyophilized from PBS with 2 % sucrose
Handling Advice:	Avoid repeat freeze-thaw cycles.

## Handling

Storage: 4 °C, -20 °C

Storage Comment: Long term: -20°C, the use of 50% glycerol is recommended if storing aliquots in -20°C for long term use (up to 1 year)  
Short term (less than 1 week): 4°C. Avoid freeze-thaw cycles.

## Images



### Immunohistochemistry

**Image 1.** Anti-Cadherin 16 antibody IHC staining of human kidney. Immunohistochemistry of formalin-fixed, paraffin-embedded tissue after heat-induced antigen retrieval. Antibody ABIN958383 concentration 5 ug/ml.