

Datasheet for ABIN6748596
anti-RGS2 antibody (AA 51-100)[Go to Product page](#)

2 Images

Overview

Quantity:	100 µL
Target:	RGS2
Binding Specificity:	AA 51-100
Reactivity:	Human, Rat, Mouse, Cow, Bat
Host:	Rabbit
Clonality:	Polyclonal
Conjugate:	This RGS2 antibody is un-conjugated
Application:	Western Blotting (WB), Immunohistochemistry (IHC), Immunohistochemistry (Paraffin-embedded Sections) (IHC (p))

Product Details

Brand:	IHC-plus™
Immunogen:	Synthetic peptide located between aa51-100 of mouse Rgs2 (P41220, NP_033087). Percent identity by BLAST analysis: Mouse, Rat, Bovine, Bat (100%), Human, Gorilla, Gibbon, Monkey, Marmoset, Elephant, Panda, Dog, Rabbit, Horse, Pig, Guinea pig (92%), Galago (85%). Type of Immunogen: Synthetic peptide
Specificity:	Mouse RGS2
Predicted Reactivity:	Percent identity by BLAST analysis: Mouse, Rat, Bovine (100%) Human, Dog, Horse, Pig (92%).
Purification:	Immunoaffinity purified

Target Details

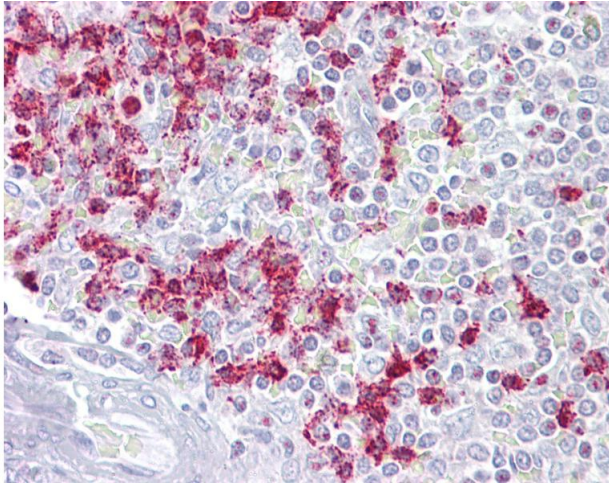
Target:	RGS2
Alternative Name:	RGS2 (RGS2 Products)
Background:	Name/Gene ID: RGS2 Family: Regulator of G-protein signalling Synonyms: RGS2, G0S8
Gene ID:	5997
NCBI Accession:	NP_033087
UniProt:	P41220
Pathways:	Myometrial Relaxation and Contraction , Regulation of G-Protein Coupled Receptor Protein Signaling , Brown Fat Cell Differentiation

Application Details

Application Notes:	Approved: IHC, IHC-P (5 µg/mL), WB (0.2 - 1 µg/mL) Usage: Western Blot: Suggested dilution at 1 µg/mL in 5 % skim milk / PBS buffer, and HRP conjugated anti-Rabbit IgG should be diluted in 1: 50,000 - 100,000 as secondary antibody.
Comment:	Target Species of Antibody: Mouse
Restrictions:	For Research Use only

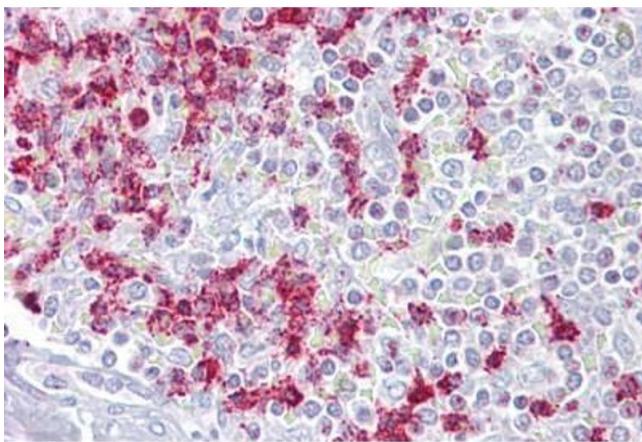
Handling

Format:	Lyophilized
Reconstitution:	Distilled water
Concentration:	Lot specific
Buffer:	Lyophilized from PBS with 2 % sucrose
Handling Advice:	Avoid repeat freeze-thaw cycles.
Storage:	4 °C, -20 °C
Storage Comment:	Long term: -20°C, the use of 50% glycerol is recommended if storing aliquots in -20°C for long term use (up to 1 year) Short term (less than 1 week): 4°C. Avoid freeze-thaw cycles.



Immunohistochemistry

Image 1. Anti-RGS2 antibody IHC of human spleen. Immunohistochemistry of formalin-fixed, paraffin-embedded tissue after heat-induced antigen retrieval. Antibody concentration 5 ug/ml. This image was taken for the unconjugated form of this product. Other form ...



Immunohistochemistry

Image 2. Anti-RGS2 antibody IHC staining of human spleen. Immunohistochemistry of formalin-fixed, paraffin-embedded tissue after heat-induced antigen retrieval. Antibody ABIN959021 concentration 5 ug/ml.