

Datasheet for ABIN6748604
anti-RORA antibody (AA 36-85)[Go to Product page](#)**2** Images

Overview

Quantity:	100 µL
Target:	RORA
Binding Specificity:	AA 36-85
Reactivity:	Human
Host:	Rabbit
Clonality:	Polyclonal
Conjugate:	This RORA antibody is un-conjugated
Application:	Western Blotting (WB), Immunohistochemistry (IHC), Immunohistochemistry (Paraffin-embedded Sections) (IHC (p))

Product Details

Brand:	IHC-plus™
Immunogen:	Synthetic peptide located between aa36-85 of human RORA (P35398, NP_599022). Percent identity by BLAST analysis: Human, Gorilla (100%). Type of Immunogen: Synthetic peptide
Specificity:	Human RORA
Predicted Reactivity:	Percent identity by BLAST analysis: Human (100%).
Purification:	Immunoaffinity purified

Target Details

Target:	RORA
Alternative Name:	RORA / ROR Alpha (RORA Products)
Background:	Name/Gene ID: RORA Subfamily: NR1 Thyroid hormone-like Family: NHR Synonyms: RORA, Nuclear receptor ROR-alpha, Nuclear receptor RZR-alpha, Roralpha, Transcription factor RZR-alpha, RAR-related orphan receptor A, ROR-alpha, ROR3, RZRA, NR1F1, ROR Alpha, RZR-ALPHA
Gene ID:	6095
NCBI Accession:	NP_599022
UniProt:	P35398
Pathways:	Nuclear Receptor Transcription Pathway , Steroid Hormone Mediated Signaling Pathway , Regulation of Lipid Metabolism by PPARalpha

Application Details

Application Notes:	Approved: IHC, IHC-P (5 µg/mL), WB (0.2 - 1 µg/mL) Usage: Western Blot: Suggested dilution at 1 µg/mL in 5 % skim milk / PBS buffer, and HRP conjugated anti-Rabbit IgG should be diluted in 1: 50,000 - 100,000 as secondary antibody.
Comment:	Target Species of Antibody: Human
Restrictions:	For Research Use only

Handling

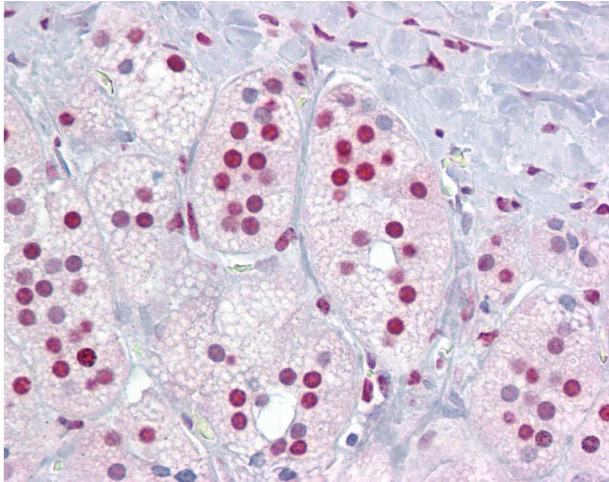
Format:	Lyophilized
Reconstitution:	Distilled water
Concentration:	Lot specific
Buffer:	Lyophilized from PBS with 2 % sucrose
Handling Advice:	Avoid repeat freeze-thaw cycles.
Storage:	4 °C, -20 °C

Handling

Storage Comment: Long term: -20°C, the use of 50% glycerol is recommended if storing aliquots in -20°C for long term use (up to 1 year)

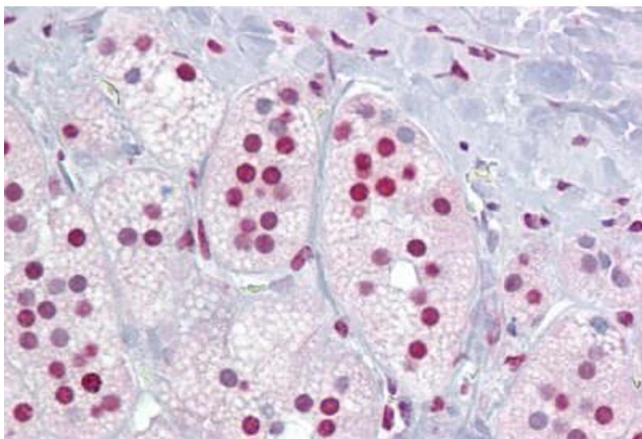
Short term (less than 1 week): 4°C. Avoid freeze-thaw cycles.

Images



Immunohistochemistry

Image 1. Anti-ROR Alpha antibody IHC of human adrenal. Immunohistochemistry of formalin-fixed, paraffin-embedded tissue after heat-induced antigen retrieval. Antibody concentration 5 ug/ml. This image was taken for the unconjugated form of this product. Othe ...



Immunohistochemistry

Image 2. Anti-ROR Alpha antibody IHC staining of human adrenal. Immunohistochemistry of formalin-fixed, paraffin-embedded tissue after heat-induced antigen retrieval. Antibody ABIN959023 concentration 5 ug/ml.