



[Go to Product page](#)

Datasheet for ABIN6748609
anti-PA2G4 antibody (AA 301-350)

2 Images

Overview

Quantity:	100 µL
Target:	PA2G4
Binding Specificity:	AA 301-350
Reactivity:	Human, Mouse, Rat, Dog, Cow, Zebrafish (Danio rerio), Guinea Pig, Horse, Xenopus laevis, Hamster, Monkey, Pig
Host:	Rabbit
Clonality:	Polyclonal
Conjugate:	This PA2G4 antibody is un-conjugated
Application:	Western Blotting (WB), Immunohistochemistry (IHC), Immunohistochemistry (Paraffin-embedded Sections) (IHC (p))

Product Details

Brand:	IHC-plus™
Immunogen:	Synthetic peptide located between aa301-350 of human PA2G4 (Q9UQ80, NP_006182). Percent identity by BLAST analysis: Human, Chimpanzee, Gorilla, Orangutan, Gibbon, Monkey, Galago, Marmoset, Mouse, Rat, Hamster, Elephant, Panda, Dog, Bovine, Horse, Pig, Guinea pig, Xenopus (100%), Smelt, Zebrafish (85%), Salmon (84%). Type of Immunogen: Synthetic peptide
Isotype:	IgG
Specificity:	Human PA2G4 / EBP1

Product Details

Predicted Reactivity: Percent identity by BLAST analysis: Human, Mouse, Rat, Dog, Bovine, Horse, Pig, Guinea pig, Xenopus (100%) Zebrafish (85%).

Purification: Immunoaffinity purified

Target Details

Target: PA2G4

Alternative Name: PA2G4 / EBP1 ([PA2G4 Products](#))

Background: Name/Gene ID: PA2G4

Subfamily: Metallopeptidase M24C

Family: Exopeptidase

Synonyms: PA2G4, ErbB-3 binding protein 1, EBP1, ErbB3-binding protein 1, ErbB3-binding protein Ebp1, p38-2G4, HG4-1

Gene ID: 5036

NCBI Accession: [NP_006182](#)

UniProt: [Q9UQ80](#)

Pathways: [Myometrial Relaxation and Contraction](#), [Regulation of Carbohydrate Metabolic Process](#), [Hepatitis C](#), [Toll-Like Receptors Cascades](#)

Application Details

Application Notes: Approved: IHC, IHC-P (5 µg/mL), WB

Usage: ELISA titer using peptide based assay: 1:1562500. Western Blot: Suggested dilution at 1 µg/mL in 5 % skim milk / PBS buffer, and HRP conjugated anti-Rabbit IgG should be diluted in 1:50000 - 100000 as second antibody.

Comment: Target Species of Antibody: Human

Restrictions: For Research Use only

Handling

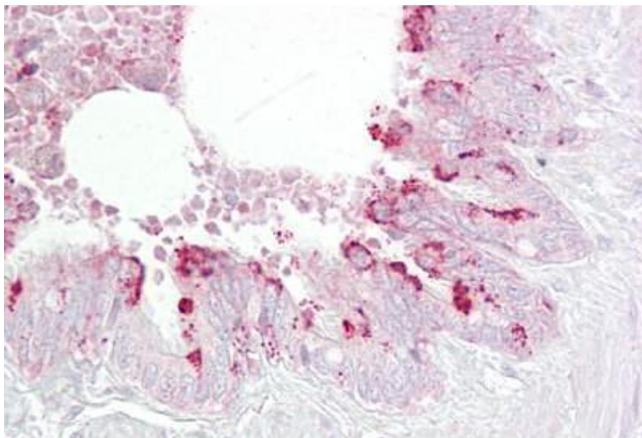
Format: Lyophilized

Reconstitution: Distilled Water.

Handling

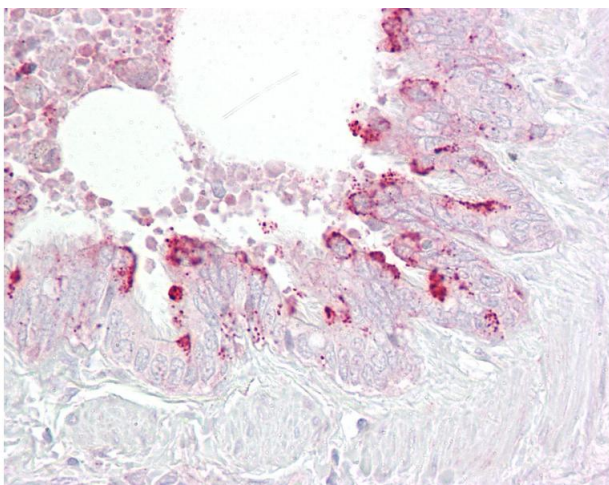
Concentration:	Lot specific
Buffer:	Lyophilized from PBS with 2 % sucrose
Handling Advice:	Avoid repeat freeze-thaw cycles.
Storage:	4 °C,-20 °C
Storage Comment:	Long term: -20°C, the use of 50% glycerol is recommended if storing aliquots in -20°C for long term use (up to 1 year) Short term (less than 1 week): 4°C. Avoid freeze-thaw cycles.

Images



Immunohistochemistry

Image 1. Anti-EBP1 antibody IHC staining of human lung, respiratory epithelium. Immunohistochemistry of formalin-fixed, paraffin-embedded tissue after heat-induced antigen retrieval. Antibody ABIN958396 concentration 5 ug/ml.



Immunohistochemistry

Image 2. Anti-EBP1 antibody IHC of human lung, respiratory epithelium. Immunohistochemistry of formalin-fixed, paraffin-embedded tissue after heat-induced antigen retrieval. Antibody concentration 5 ug/ml. This image was taken for the unconjugated form of th ...