

Datasheet for ABIN6748612
anti-GSTT1 antibody (C-Term)



[Go to Product page](#)

2 Images

Overview

Quantity:	100 µL
Target:	GSTT1
Binding Specificity:	C-Term
Reactivity:	Human, Rabbit, Cow, Dog, Guinea Pig
Host:	Rabbit
Clonality:	Polyclonal
Conjugate:	This GSTT1 antibody is un-conjugated
Application:	Western Blotting (WB), Immunohistochemistry (IHC), Immunohistochemistry (Paraffin-embedded Sections) (IHC (p))

Product Details

Brand:	IHC-plus™
Immunogen:	Synthetic peptide from C-Terminus of human GSTT1 (P30711, NP_000844). Percent identity by BLAST analysis: Human, Chimpanzee, Gibbon (100%), Gorilla, Galago, Marmoset, Panda (92%), Dog, Horse (85%). Type of Immunogen: Synthetic peptide
Isotype:	IgG
Specificity:	Human GSTT1
Predicted Reactivity:	Percent identity by BLAST analysis: Human (100%) Dog (85%).
Purification:	Immunoaffinity purified

Target Details

Target: GSTT1

Alternative Name: GSTT1 ([GSTT1 Products](#))

Background: Name/Gene ID: GSTT1

Synonyms: GSTT1, GST class-theta-1, Glutathione transferase T1-1

Gene ID: 2952

NCBI Accession: [NP_000844](#)

UniProt: [P30711](#)

Application Details

Application Notes: Approved: IHC, IHC-P (5 µg/mL), WB (0.2 - 1 µg/mL)

Usage: ELISA titer using peptide based assay: 1:1562500. Western Blot: Suggested dilution at 1 µg/mL in 5 % skim milk / PBS buffer, and HRP conjugated anti-Rabbit IgG should be diluted in 1:50000 - 100000 as second antibody.

Comment: Target Species of Antibody: Human

Restrictions: For Research Use only

Handling

Format: Lyophilized

Reconstitution: Distilled Water.

Concentration: Lot specific

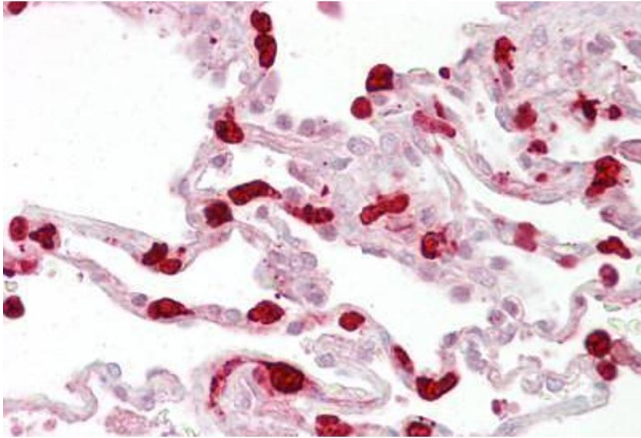
Buffer: Lyophilized from PBS with 2 % sucrose

Handling Advice: Avoid repeat freeze-thaw cycles.

Storage: 4 °C, -20 °C

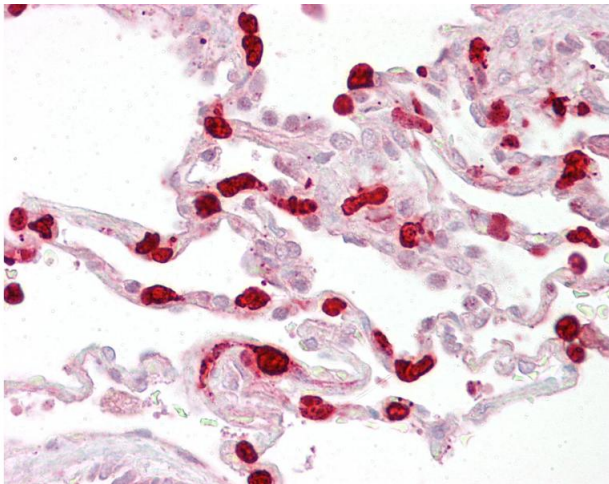
Storage Comment: Long term: -20°C, the use of 50% glycerol is recommended if storing aliquots in -20°C for long term use (up to 1 year)

Short term (less than 1 week): 4°C. Avoid freeze-thaw cycles.



Immunohistochemistry

Image 1. Anti-GSTT1 antibody IHC staining of human lung. Immunohistochemistry of formalin-fixed, paraffin-embedded tissue after heat-induced antigen retrieval. Antibody ABIN958388 concentration 5 ug/ml.



Immunohistochemistry

Image 2. Anti-GSTT1 antibody IHC of human lung. Immunohistochemistry of formalin-fixed, paraffin-embedded tissue after heat-induced antigen retrieval. Antibody concentration 5 ug/ml. This image was taken for the unconjugated form of this product. Other forms ...