



[Go to Product page](#)

Datasheet for ABIN6748617
anti-METAP2 antibody (AA 95-144)

2 Images

Overview

Quantity:	100 µL
Target:	METAP2
Binding Specificity:	AA 95-144
Reactivity:	Human, Mouse, Rat, Cow, Zebrafish (Danio rerio), Dog, Guinea Pig, Horse, Bat, Hamster, Monkey, Pig
Host:	Rabbit
Clonality:	Polyclonal
Conjugate:	This METAP2 antibody is un-conjugated
Application:	Western Blotting (WB), Immunohistochemistry (IHC), Immunohistochemistry (Paraffin-embedded Sections) (IHC (p))

Product Details

Brand:	IHC-plus™
Immunogen:	Synthetic peptide located between aa95-144 of human METAP2 (P50579, NP_006829). Percent identity by BLAST analysis: Human, Chimpanzee, Gorilla, Monkey, Marmoset, Mouse, Rat, Hamster, Elephant, Panda, Dog, Bovine, Bat, Horse, Pig, Guinea pig (100%), Rabbit, Opossum, Platypus (92%), Xenopus, Zebrafish (84%). Type of Immunogen: Synthetic peptide
Isotype:	IgG
Specificity:	Human METAP2

Product Details

Predicted Reactivity:	Percent identity by BLAST analysis: Human, Mouse, Rat, Dog, Horse, Guinea pig (100%) Rabbit (92%) Xenopus, Zebrafish (84%).
Purification:	Immunoaffinity purified

Target Details

Target:	METAP2
Alternative Name:	METAP2 (METAP2 Products)
Background:	Name/Gene ID: METAP2 Subfamily: Metallopeptidase M24C Family: Exopeptidase Synonyms: METAP2, MAP 2, MetAP 2, Methionyl aminopeptidase 2, Methionine aminopeptidase 2, Peptidase M 2, MNPEP, p67, EIF-2-associated p67 homolog, p67eIF2
Gene ID:	10988
NCBI Accession:	NP_006829
UniProt:	P50579
Pathways:	Regulation of G-Protein Coupled Receptor Protein Signaling

Application Details

Application Notes:	Approved: IHC, IHC-P (5 µg/mL), WB Usage: ELISA titer using peptide based assay: 1:312500. Western Blot: Suggested dilution at 0.5 µg/mL in 5 % skim milk / PBS buffer, and HRP conjugated anti-Rabbit IgG should be diluted in 1:50000 - 100000 as second antibody.
Comment:	Target Species of Antibody: Human
Restrictions:	For Research Use only

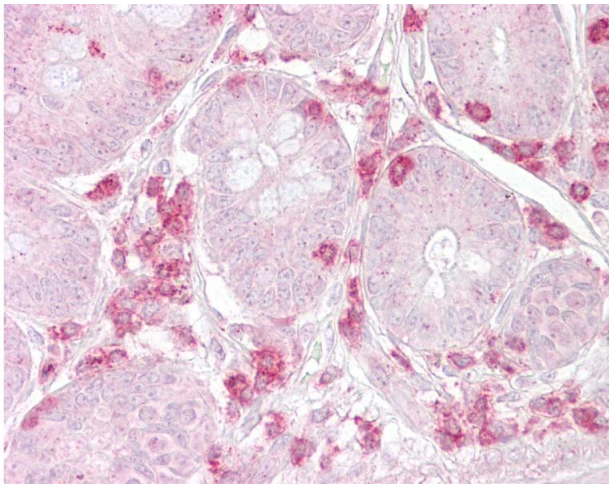
Handling

Format:	Lyophilized
Reconstitution:	Distilled Water.
Concentration:	Lot specific

Handling

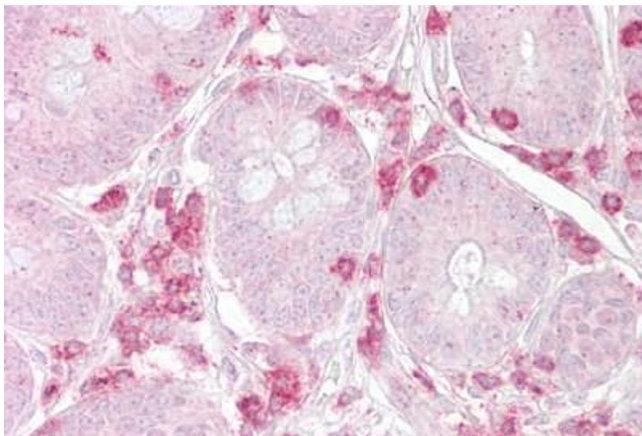
Buffer:	Lyophilized from PBS with 2 % sucrose
Handling Advice:	Avoid repeat freeze-thaw cycles.
Storage:	4 °C, -20 °C
Storage Comment:	Long term: -20°C, the use of 50% glycerol is recommended if storing aliquots in -20°C for long term use (up to 1 year) Short term (less than 1 week): 4°C. Avoid freeze-thaw cycles.

Images



Immunohistochemistry

Image 1. Anti-METAP2 antibody IHC of human small intestine. Immunohistochemistry of formalin-fixed, paraffin-embedded tissue after heat-induced antigen retrieval. Antibody concentration 5 ug/ml. This image was taken for the unconjugated form of this product. ...



Immunohistochemistry

Image 2. Anti-METAP2 antibody IHC staining of human small intestine. Immunohistochemistry of formalin-fixed, paraffin-embedded tissue after heat-induced antigen retrieval. Antibody ABIN958392 concentration 5 ug/ml.