

Datasheet for ABIN6748623
anti-PROS1 antibody (AA 251-300)

2 Images

[Go to Product page](#)

Overview

Quantity:	100 µL
Target:	PROS1 (PROS)
Binding Specificity:	AA 251-300
Reactivity:	Human, Rat, Mouse, Dog, Horse, Cow, Bat, Monkey
Host:	Rabbit
Clonality:	Polyclonal
Conjugate:	This PROS1 antibody is un-conjugated
Application:	Western Blotting (WB), Immunohistochemistry (IHC), Immunohistochemistry (Paraffin-embedded Sections) (IHC (p))

Product Details

Brand:	IHC-plus™
Immunogen:	Synthetic peptide located between aa251-300 of human PROS1 (P07225, NP_000304). Percent identity by BLAST analysis: Human, Gorilla, Gibbon, Monkey, Marmoset, Mouse, Rat, Elephant, Bovine, Bat, Horse (100%), Panda, Rabbit, Pig, Guinea pig (92%), Dog (85%), Opossum (84%). Type of Immunogen: Synthetic peptide
Specificity:	Human PROS1
Predicted Reactivity:	Percent identity by BLAST analysis: Human, Mouse, Horse (100%) Guinea pig (92%) Dog (85%).
Purification:	Immunoaffinity purified

Target Details

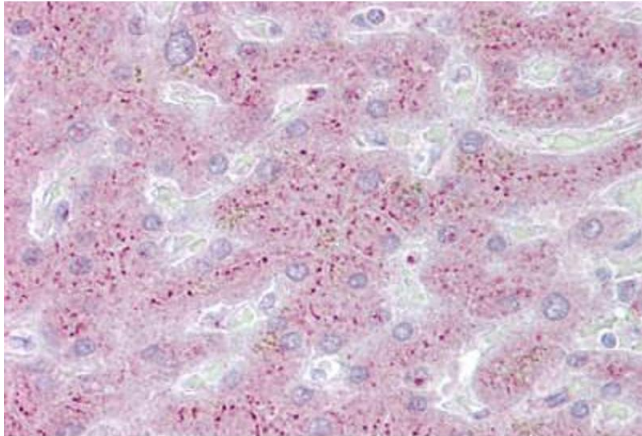
Target:	PROS1 (PROS)
Alternative Name:	PROS1 / Protein S (PROS Products)
Background:	Name/Gene ID: PROS1 Synonyms: PROS1, Protein S (alpha), Protein S alpha, Protein Sa, PS22, PS21, Vitamin K-dependent protein S, THPH5, THPH6, PROS, PS24, Protein S, PS23, PS25
Gene ID:	5627
NCBI Accession:	NP_000304
UniProt:	P07225

Application Details

Application Notes:	Approved: IHC, IHC-P (5 µg/mL), WB (0.2 - 1 µg/mL) Usage: Western Blot: Suggested dilution at 1 µg/mL in 5 % skim milk / PBS buffer, and HRP conjugated anti-Rabbit IgG should be diluted in 1: 50,000 - 100,000 as secondary antibody.
Comment:	Target Species of Antibody: Human
Restrictions:	For Research Use only

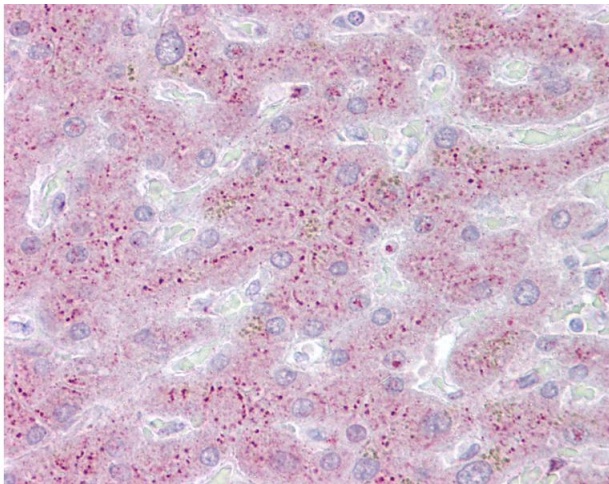
Handling

Format:	Lyophilized
Reconstitution:	Distilled water
Concentration:	Lot specific
Buffer:	Lyophilized from PBS with 2 % sucrose
Handling Advice:	Avoid repeat freeze-thaw cycles.
Storage:	4 °C, -20 °C
Storage Comment:	Long term: -20°C, the use of 50% glycerol is recommended if storing aliquots in -20°C for long term use (up to 1 year) Short term (less than 1 week): 4°C. Avoid freeze-thaw cycles.



Immunohistochemistry

Image 1. Anti-PROS1 antibody IHC staining of human liver. Immunohistochemistry of formalin-fixed, paraffin-embedded tissue after heat-induced antigen retrieval. Antibody ABIN959013 concentration 5 ug/ml.



Immunohistochemistry

Image 2. Anti-PROS1 antibody IHC of human liver. Immunohistochemistry of formalin-fixed, paraffin-embedded tissue after heat-induced antigen retrieval. Antibody concentration 5 ug/ml. This image was taken for the unconjugated form of this product. Other form ...