

Datasheet for ABIN6748632
anti-CFP antibody (AA 35-84)

2 Images

[Go to Product page](#)

Overview

Quantity:	100 µL
Target:	CFP
Binding Specificity:	AA 35-84
Reactivity:	Human
Host:	Rabbit
Clonality:	Polyclonal
Conjugate:	This CFP antibody is un-conjugated
Application:	Western Blotting (WB), Immunohistochemistry (IHC), Immunohistochemistry (Paraffin-embedded Sections) (IHC (p))

Product Details

Brand:	IHC-plus™
Immunogen:	Synthetic peptide located between aa35-84 of human CFP (P27918, NP_002612). Percent identity by BLAST analysis: Human, Chimpanzee, Gorilla (100%), Orangutan, Gibbon (85%). Type of Immunogen: Synthetic peptide
Specificity:	Human CFP / Properdin
Predicted Reactivity:	Percent identity by BLAST analysis: Human (100%).
Purification:	Immunoaffinity purified

Target Details

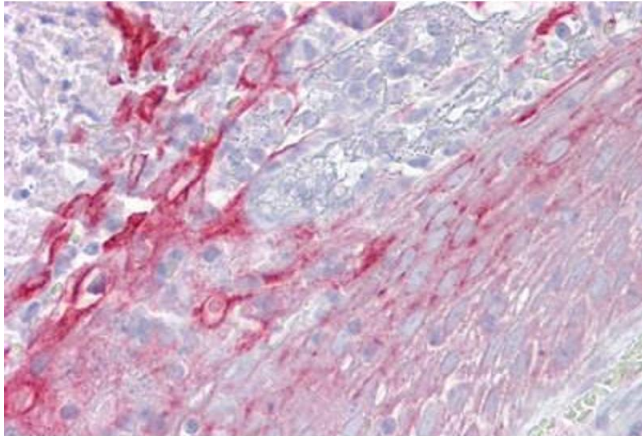
Target:	CFP
Alternative Name:	Properdin / CFP (CFP Products)
Background:	Name/Gene ID: CFP Synonyms: CFP, Complement factor P, Complement factor properdin, PFC, PFD, Properidin, BFD, Properdin, Properdin P factor, complement
Gene ID:	5199
NCBI Accession:	NP_002612
UniProt:	P27918
Pathways:	Complement System

Application Details

Application Notes:	Approved: IHC, IHC-P (5 µg/mL), WB (0.2 - 1 µg/mL) Usage: Western Blot: Suggested dilution at 1 µg/mL in 5 % skim milk / PBS buffer, and HRP conjugated anti-Rabbit IgG should be diluted in 1: 50,000 - 100,000 as secondary antibody.
Comment:	Target Species of Antibody: Human
Restrictions:	For Research Use only

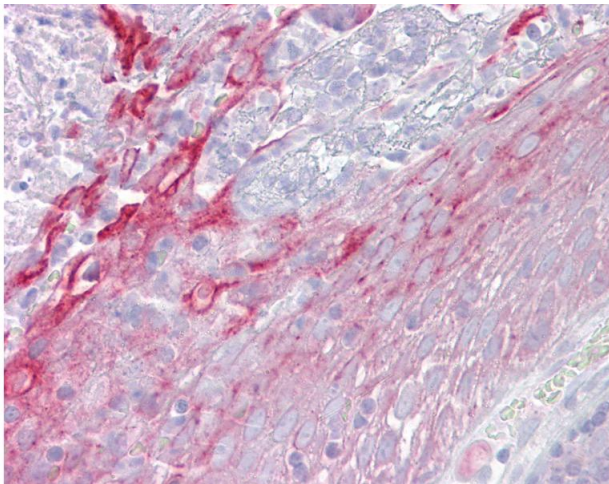
Handling

Format:	Lyophilized
Reconstitution:	Distilled water
Concentration:	Lot specific
Buffer:	Lyophilized from PBS with 2 % sucrose
Handling Advice:	Avoid repeat freeze-thaw cycles.
Storage:	4 °C,-20 °C
Storage Comment:	Long term: -20°C, the use of 50% glycerol is recommended if storing aliquots in -20°C for long term use (up to 1 year) Short term (less than 1 week): 4°C. Avoid freeze-thaw cycles.



Immunohistochemistry

Image 1. Anti-CFP / Properdin antibody IHC staining of human tonsil. Immunohistochemistry of formalin-fixed, paraffin-embedded tissue after heat-induced antigen retrieval. Antibody ABIN958963 concentration 5 ug/ml.



Immunohistochemistry

Image 2. Anti-CFP / Properdin antibody IHC of human tonsil. Immunohistochemistry of formalin-fixed, paraffin-embedded tissue after heat-induced antigen retrieval. Antibody concentration 5 ug/ml. This image was taken for the unconjugated form of this product. ...