



[Go to Product page](#)

Datasheet for ABIN6748633

## anti-PPP2R3A antibody (AA 179-228)

### 2 Images

#### Overview

Quantity:	100 µL
Target:	PPP2R3A
Binding Specificity:	AA 179-228
Reactivity:	Human, Horse, Guinea Pig, Pig
Host:	Rabbit
Clonality:	Polyclonal
Conjugate:	This PPP2R3A antibody is un-conjugated
Application:	Western Blotting (WB), Immunohistochemistry (IHC), Immunohistochemistry (Paraffin-embedded Sections) (IHC (p))

#### Product Details

Brand:	IHC-plus™
Immunogen:	Synthetic peptide located between aa179-228 of human PPP2R3A (Q06190, NP_002709). Percent identity by BLAST analysis: Human, Chimpanzee, Gibbon, Monkey (100%), Gorilla, Galago, Marmoset, Mouse, Rat, Hamster, Rabbit (92%), Bat, Horse, Pig, Guinea pig (85%).  Type of Immunogen: Synthetic peptide
Specificity:	Human PPP2R3A
Predicted Reactivity:	Percent identity by BLAST analysis: Human (100%) Mouse, Rat, Rabbit (92%) Horse, Pig, Guinea pig (85%).
Purification:	Immunoaffinity purified

## Target Details

---

Target:	PPP2R3A
Alternative Name:	PPP2R3A / PR130 ( <a href="#">PPP2R3A Products</a> )
Background:	Name/Gene ID: PPP2R3A  Synonyms: PPP2R3A, PR130, PR72, PPP2R3, PP2A, subunit B, R3 isoform
Gene ID:	5523
NCBI Accession:	<a href="#">NP_002709</a>
UniProt:	<a href="#">Q06190</a>
Pathways:	<a href="#">PI3K-Akt Signaling</a>

## Application Details

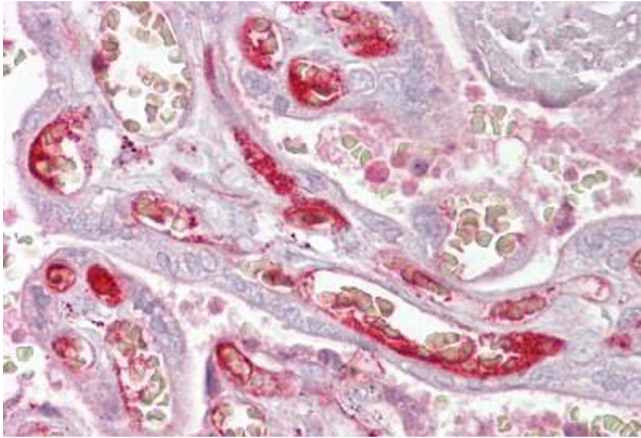
---

Application Notes:	Approved: IHC, IHC-P (5 µg/mL), WB (0.2 - 1 µg/mL)  Usage: Western Blot: Suggested dilution at 1 µg/mL in 5 % skim milk / PBS buffer, and HRP conjugated anti-Rabbit IgG should be diluted in 1: 50,000 - 100,000 as secondary antibody.
Comment:	Target Species of Antibody: Human
Restrictions:	For Research Use only

## Handling

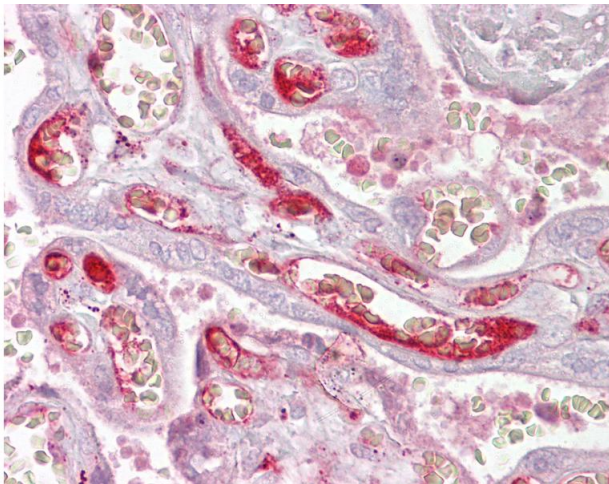
---

Format:	Lyophilized
Reconstitution:	Distilled water
Concentration:	Lot specific
Buffer:	Lyophilized from PBS with 2 % sucrose
Handling Advice:	Avoid repeat freeze-thaw cycles.
Storage:	4 °C, -20 °C
Storage Comment:	Long term: -20°C, the use of 50% glycerol is recommended if storing aliquots in -20°C for long term use (up to 1 year)  Short term (less than 1 week): 4°C. Avoid freeze-thaw cycles.



#### Immunohistochemistry

**Image 1.** Anti-PPP2R3A antibody IHC staining of human placenta. Immunohistochemistry of formalin-fixed, paraffin-embedded tissue after heat-induced antigen retrieval. Antibody ABIN959012 concentration 5 ug/ml.



#### Immunohistochemistry

**Image 2.** Anti-PPP2R3A antibody IHC of human placenta. Immunohistochemistry of formalin-fixed, paraffin-embedded tissue after heat-induced antigen retrieval. Antibody concentration 5 ug/ml. This image was taken for the unconjugated form of this product. Other ...