

Datasheet for ABIN6748645
anti-Presenilin 1 antibody (AA 300-349)

2 Images

[Go to Product page](#)

Overview

Quantity:	100 µL
Target:	Presenilin 1 (PSEN1)
Binding Specificity:	AA 300-349
Reactivity:	Human, Mouse, Monkey, Cow, Pig, Guinea Pig, Horse
Host:	Rabbit
Clonality:	Polyclonal
Conjugate:	This Presenilin 1 antibody is un-conjugated
Application:	Western Blotting (WB), Immunohistochemistry (IHC), Immunohistochemistry (Paraffin-embedded Sections) (IHC (p))

Product Details

Brand:	IHC-plus™
Immunogen:	Synthetic peptide located between aa300-349 of human PSEN1 (P49768, NP_000012). Percent identity by BLAST analysis: Human, Chimpanzee, Gorilla, Orangutan, Gibbon, Monkey, Marmoset, Guinea pig (100%), Opossum (92%), Mouse, Hamster, Elephant, Dog, Bovine, Bat, Horse, Pig (85%), Rat (84%). Type of Immunogen: Synthetic peptide
Specificity:	Human PSEN1 / Presenilin 1
Predicted Reactivity:	Percent identity by BLAST analysis: Human, Guinea pig (100%) Mouse, Bovine, Horse, Pig (85%).
Purification:	Immunoaffinity purified

Target Details

Target:	Presenilin 1 (PSEN1)
Alternative Name:	PSEN1 / Presenilin 1 (PSEN1 Products)
Background:	Name/Gene ID: PSEN1 Subfamily: Aspartic A22A Family: protease Synonyms: PSEN1, AD3, Alzheimer disease 3, FAD, Protein S182, PS1, S182, PS-1, PSNL1, Presenilin 1, Presenilin-1
Gene ID:	5663
NCBI Accession:	NP_000012
UniProt:	P49768
Pathways:	Notch Signaling , EGFR Signaling Pathway , Synaptic Vesicle Exocytosis , Dicarboxylic Acid Transport

Application Details

Application Notes:	Approved: IHC, IHC-P (5 µg/mL), WB (0.2 - 1 µg/mL) Usage: Western Blot: Suggested dilution at 1 µg/mL in 5 % skim milk / PBS buffer, and HRP conjugated anti-Rabbit IgG should be diluted in 1: 50,000 - 100,000 as secondary antibody.
Comment:	Target Species of Antibody: Human
Restrictions:	For Research Use only

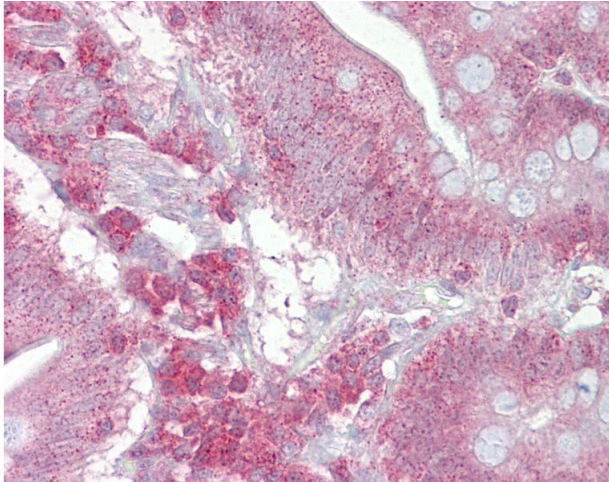
Handling

Format:	Lyophilized
Reconstitution:	Distilled water
Concentration:	Lot specific
Buffer:	Lyophilized from PBS with 2 % sucrose
Handling Advice:	Avoid repeat freeze-thaw cycles.
Storage:	4 °C,-20 °C
Storage Comment:	Long term: -20°C, the use of 50% glycerol is recommended if storing aliquots in -20°C for long

term use (up to 1 year)

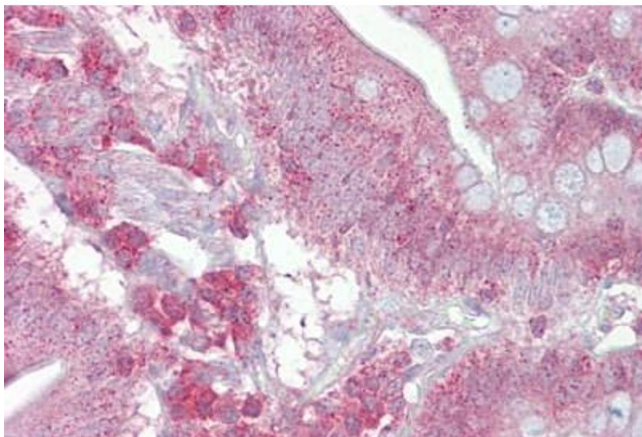
Short term (less than 1 week): 4°C. Avoid freeze-thaw cycles.

Images



Immunohistochemistry

Image 1. Anti-PSEN1 / Presenilin 1 antibody IHC of human small intestine. Immunohistochemistry of formalin-fixed, paraffin-embedded tissue after heat-induced antigen retrieval. Antibody concentration 5 ug/ml. This image was taken for the unconjugated form of ...



Immunohistochemistry

Image 2. Anti-PSEN1 / Presenilin 1 antibody IHC staining of human small intestine. Immunohistochemistry of formalin-fixed, paraffin-embedded tissue after heat-induced antigen retrieval. Antibody ABIN959015 concentration 5 ug/ml.