

Datasheet for ABIN6748646 anti-SSTR1 antibody (AA 251-300)



[Go to Product page](#)

2 Images

Overview

Quantity:	100 µL
Target:	SSTR1
Binding Specificity:	AA 251-300
Reactivity:	Human, Mouse, Rat, Monkey, Cow, Dog, Rabbit, Goat, Horse, Guinea Pig, Pig, Bat, Chicken
Host:	Rabbit
Clonality:	Polyclonal
Conjugate:	This SSTR1 antibody is un-conjugated
Application:	Western Blotting (WB), Immunohistochemistry (IHC), Immunohistochemistry (Paraffin-embedded Sections) (IHC (p))

Product Details

Brand:	IHC-plus™
Immunogen:	Synthetic peptide located between aa251-300 of human SSTR1 (P28646, NP_001040). Percent identity by BLAST analysis: Human, Chimpanzee, Monkey, Galago, Mouse, Rat, Goat, Elephant, Panda, Dog, Bovine, Bat, Rabbit, Horse, Pig, Opossum, Guinea pig, Turkey, Zebra finch, Chicken (100%), Zebrafish (92%), Gibbon, Marmoset, Sheep, Hamster (85%). Type of Immunogen: Synthetic peptide
Specificity:	Human SSTR1
Predicted Reactivity:	Percent identity by BLAST analysis: Mouse, Dog, Bovine, Goat, Horse, Pig, Guinea pig, Chicken (100%) Zebrafish (92%).

Product Details

Purification: Immunoaffinity purified

Target Details

Target: SSTR1

Alternative Name: SSTR1 ([SSTR1 Products](#))

Background: Name/Gene ID: SSTR1
Subfamily: Somatostatin
Family: GPCR

Synonyms: SSTR1, Somatostatin receptor type 1, SS1-R, SS1R, Somatostatin receptor 1, SRIF-2, Sst1 receptor, SS-1-R, Sst1

Gene ID: 6751

NCBI Accession: [NP_001040](#)

UniProt: [P30872](#)

Application Details

Application Notes: Approved: IHC, IHC-P (5 µg/mL), WB (0.2 - 1 µg/mL)

Usage: Western Blot: Suggested dilution at 1 µg/mL in 5 % skim milk / PBS buffer, and HRP conjugated anti-Rabbit IgG should be diluted in 1: 50,000 - 100,000 as secondary antibody.

Comment: Target Species of Antibody: Human

Restrictions: For Research Use only

Handling

Format: Lyophilized

Reconstitution: Distilled water

Concentration: Lot specific

Buffer: Lyophilized from PBS with 2 % sucrose

Handling Advice: Avoid repeat freeze-thaw cycles.

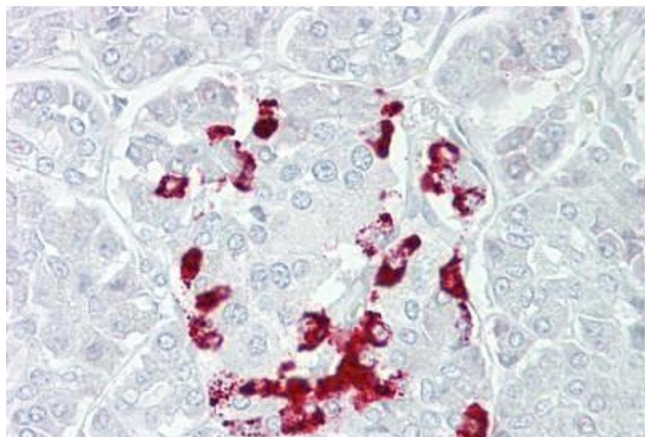
Storage: 4 °C, -20 °C

Handling

Storage Comment: Long term: -20°C, the use of 50% glycerol is recommended if storing aliquots in -20°C for long term use (up to 1 year)

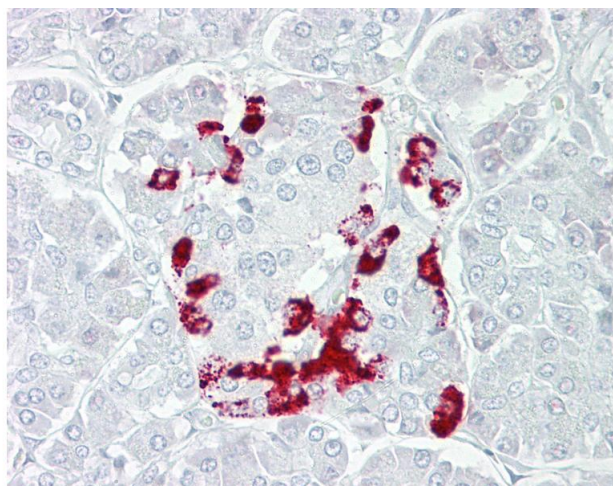
Short term (less than 1 week): 4°C. Avoid freeze-thaw cycles.

Images



Immunohistochemistry

Image 1. Anti-SSTR1 antibody IHC staining of human pancreas. Immunohistochemistry of formalin-fixed, paraffin-embedded tissue after heat-induced antigen retrieval. Antibody ABIN959030 concentration 5 ug/ml.



Immunohistochemistry

Image 2. Anti-SSTR1 antibody IHC of human pancreas. Immunohistochemistry of formalin-fixed, paraffin-embedded tissue after heat-induced antigen retrieval. Antibody concentration 5 ug/ml. This image was taken for the unconjugated form of this product. Other f ...