

Datasheet for ABIN6748652  
**anti-RIPK3 antibody (AA 251-300)**



[Go to Product page](#)

2 Images

## Overview

Quantity:	100 µL
Target:	RIPK3
Binding Specificity:	AA 251-300
Reactivity:	Human
Host:	Rabbit
Clonality:	Polyclonal
Conjugate:	This RIPK3 antibody is un-conjugated
Application:	Western Blotting (WB), Immunohistochemistry (IHC), Immunohistochemistry (Paraffin-embedded Sections) (IHC (p))

## Product Details

Brand:	IHC-plus™
Immunogen:	Synthetic peptide located between aa251-300 of human RIPK3 (Q9Y572, NP_006862). Percent identity by BLAST analysis: Human, Gorilla (100%), Gibbon, Monkey, Rat, Dog, Horse (92%), Opossum (83%), Mouse (75%).  Type of Immunogen: Synthetic peptide
Specificity:	Human RIPK3 / RIP3
Predicted Reactivity:	Percent identity by BLAST analysis: Human (100%) Rat, Dog, Horse (92%).
Purification:	Immunoaffinity purified

## Target Details

Target:	RIPK3
Alternative Name:	RIPK3 / RIP3 ( <a href="#">RIPK3 Products</a> )
Background:	Name/Gene ID: RIPK3 Subfamily: RIP Family: Protein Kinase  Synonyms: RIPK3, Receptor interacting protein 3, RIP-like protein kinase 3, RIP3, RIP-3, Receptor-interacting protein 3
Gene ID:	11035
NCBI Accession:	<a href="#">NP_006862</a>
UniProt:	<a href="#">Q9Y572</a>
Pathways:	<a href="#">Activation of Innate immune Response</a> , <a href="#">Toll-Like Receptors Cascades</a>

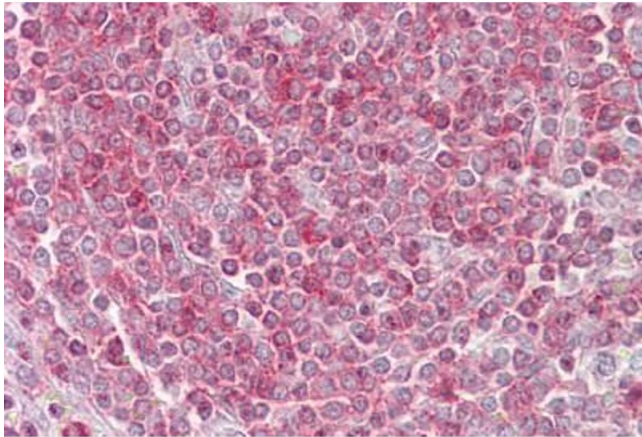
## Application Details

Application Notes:	Approved: IHC, IHC-P (5 µg/mL), WB (0.2 - 1 µg/mL)  Usage: Western Blot: Suggested dilution at 1 µg/mL in 5 % skim milk / PBS buffer, and HRP conjugated anti-Rabbit IgG should be diluted in 1: 50,000 - 100,000 as secondary antibody.
Comment:	Target Species of Antibody: Human
Restrictions:	For Research Use only

## Handling

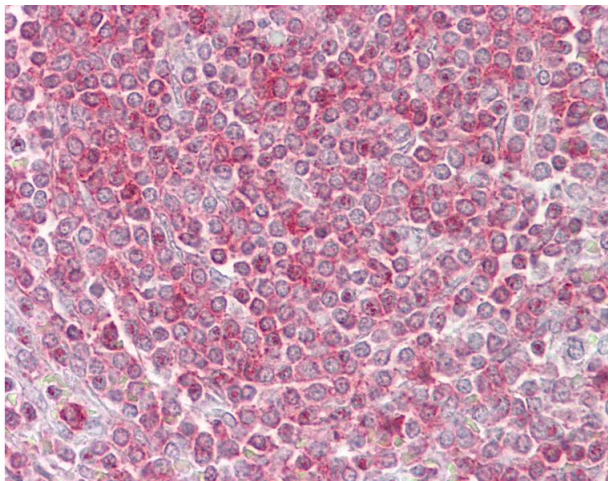
Format:	Lyophilized
Reconstitution:	Distilled water
Concentration:	Lot specific
Buffer:	Lyophilized
Handling Advice:	Avoid repeat freeze-thaw cycles.
Storage:	4 °C,-20 °C
Storage Comment:	Long term: -20°C, the use of 50% glycerol is recommended if storing aliquots in -20°C for long term use (up to 1 year)

Short term (less than 1 week): 4°C. Avoid freeze-thaw cycles.



### Immunohistochemistry

**Image 1.** Anti-RIPK3 / RIP3 antibody IHC staining of human spleen. Immunohistochemistry of formalin-fixed, paraffin-embedded tissue after heat-induced antigen retrieval. Antibody ABIN959022 concentration 5 ug/ml.



### Immunohistochemistry

**Image 2.** Anti-RIPK3 / RIP3 antibody IHC of human spleen. Immunohistochemistry of formalin-fixed, paraffin-embedded tissue after heat-induced antigen retrieval. Antibody concentration 5 ug/ml. This image was taken for the unconjugated form of this product. Ot ...