



[Go to Product page](#)

Datasheet for ABIN674934

anti-gamma Tubulin antibody (AA 351-451)

1 Image

1 Publication

Overview

Quantity:	100 µL
Target:	gamma Tubulin (TUBG)
Binding Specificity:	AA 351-451
Reactivity:	Mouse
Host:	Rabbit
Clonality:	Polyclonal
Conjugate:	This gamma Tubulin antibody is un-conjugated
Application:	Immunofluorescence (Paraffin-embedded Sections) (IF (p)), Immunofluorescence (Cultured Cells) (IF (cc)), Immunohistochemistry (Paraffin-embedded Sections) (IHC (p)), ELISA, Immunohistochemistry (Frozen Sections) (IHC (fro))

Product Details

Immunogen:	KLH conjugated synthetic peptide derived from human Tubulin gamma-1 chain
Isotype:	IgG
Cross-Reactivity:	Mouse
Predicted Reactivity:	Human,Rat,Dog,Cow,Pig,Horse,Chicken,Rabbit,Guinea Pig
Purification:	Purified by Protein A.

Target Details

Target:	gamma Tubulin (TUBG)
---------	----------------------

Target Details

Alternative Name:	gamma tubulin Centrosome Marker (TUBG Products)
Background:	<p>Synonyms: TUBG, GCP-1, CDCBM4, TUBGCP1, Tubulin gamma-1 chain, Gamma-1-tubulin, Gamma-tubulin complex component 1, TUBG1</p> <p>Background: Tubulin is the major constituent of microtubules. The gamma chain is found at microtubule organizing centers (MTOC) such as the spindle poles or the centrosome. Pericentriolar matrix component that regulates alpha/beta chain minus-end nucleation, centrosome duplication and spindle formation.</p>
Gene ID:	7283
UniProt:	P23258

Application Details

Application Notes:	<p>ELISA 1:500-1000</p> <p>IHC-P 1:200-400</p> <p>IHC-F 1:100-500</p> <p>IF(IHC-P) 1:50-200</p> <p>IF(IHC-F) 1:50-200</p> <p>IF(ICC) 1:50-200</p>
Restrictions:	For Research Use only

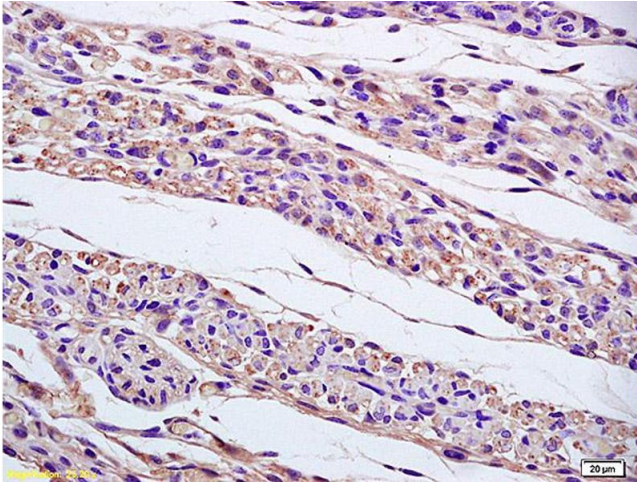
Handling

Format:	Liquid
Concentration:	1 µg/µL
Buffer:	0.01M TBS(pH 7.4) with 1 % BSA, 0.02 % Proclin300 and 50 % Glycerol.
Preservative:	ProClin
Precaution of Use:	This product contains ProClin: a POISONOUS AND HAZARDOUS SUBSTANCE, which should be handled by trained staff only.
Storage:	4 °C,-20 °C
Storage Comment:	Shipped at 4°C. Store at -20°C for one year. Avoid repeated freeze/thaw cycles.
Expiry Date:	12 months

Publications

Product cited in: Katzenell, Leib: "Herpes simplex virus and interferon signaling induce novel autophagic clusters in sensory neurons." in: **Journal of virology**, (2016) ([PubMed](#)).

Images



Immunohistochemistry

Image 1. Formalin-fixed and paraffin embedded mouse embryo labeled with Anti-gamma tubulin(Centrosome Marker) Polyclonal Antibody, Unconjugated (ABIN674934) at 1:200 followed by conjugation to the secondary antibody and DAB staining.