



Datasheet for ABIN674964  
**anti-PDE4D antibody (AA 401-550)**



[Go to Product page](#)

1 Image

Overview

Quantity:	100 µL
Target:	PDE4D
Binding Specificity:	AA 401-550
Reactivity:	Human, Rat, Mouse
Host:	Rabbit
Clonality:	Polyclonal
Conjugate:	This PDE4D antibody is un-conjugated
Application:	Western Blotting (WB), ELISA, Flow Cytometry (FACS)

Product Details

Immunogen:	KLH conjugated synthetic peptide derived from human PDE4D
Isotype:	IgG
Cross-Reactivity:	Human, Mouse, Rat
Predicted Reactivity:	Dog,Cow,Pig,Horse,Rabbit
Purification:	Purified by Protein A.

Target Details

Target:	PDE4D
Alternative Name:	PDE4D ( <a href="#">PDE4D Products</a> )
Background:	Synonyms: cAMP specic 3',5' cyclic phosphodiesterase 4D, DKFZp686M11213, FLJ97311,

## Target Details

---

cAMP specific 3' 5' cyclic phosphodiesterase 4D, cAMP specific phosphodiesterase 4D, cAMP specific phosphodiesterase PDE4D, cAMP specific phosphodiesterase PDE4D6, cyclic AMP phosphodiesterase, DPDE 3, DPDE3, Duncce like phosphodiesterase E3, HSPDE4D, PDE 43, PDE43, PDE4DN2, Phosphodiesterase 4D cAMP specific duncce Drosophila homolog phosphodiesterase E3, Phosphodiesterase 4D cAMP specific phosphodiesterase E3 duncce homolog Drosophila, Phosphodiesterase 4D cAMP specific, Phosphodiesterase 4D, cAMP specific duncce, Phosphodiesterase E3 duncce homolog Drosophila, STRK 1, STRK1.

Background: Cyclic AMP-dependent phosphodiesterase type D (PDE4D) family is comprise of 5 variants (PDE4D1, D2, D3, D4 and D5). One or more PDE4D subtype variants are ubiquitously present in all mammalian cells. In CNS all five PDE4D subtype variants are expressed in varying ratios and their activity is regulated in tandem with GPCRs stimulation. Peripheral tissues also exhibit differential expression of PDE4D variants. PDE4D1/D2 mRNA levels rise in response to an increase in cAMP. Short term regulation of PDE4D variants involved PKA, MAP kinases and Erk2 phosphorylation that results in rapid change in their enzymatic activities. Other regulatory mechanism involved protein protein interactions with cytoskeletal scaffolding proteins.

---

Gene ID: 5144

---

Pathways: [Cellular Response to Molecule of Bacterial Origin](#), [cAMP Metabolic Process](#), [Myometrial Relaxation and Contraction](#), [Regulation of G-Protein Coupled Receptor Protein Signaling](#)

## Application Details

---

Application Notes: WB 1:300-5000  
ELISA 1:500-1000  
FCM 1:20-100

---

Restrictions: For Research Use only

## Handling

---

Format: Liquid

---

Concentration: 1 µg/µL

---

Buffer: 0.01M TBS( pH 7.4) with 1 % BSA, 0.02 % Proclin300 and 50 % Glycerol.

---

Preservative: ProClin

---

Precaution of Use: This product contains ProClin: a POISONOUS AND HAZARDOUS SUBSTANCE, which should be handled by trained staff only.

---

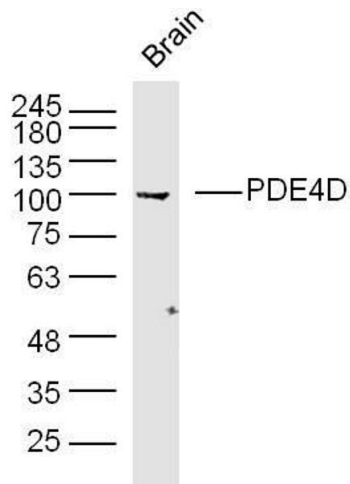
## Handling

Storage: 4 °C, -20 °C

Storage Comment: Shipped at 4°C. Store at -20°C for one year. Avoid repeated freeze/thaw cycles.

Expiry Date: 12 months

## Images



### Western Blotting

**Image 1.** Mouse brain lysates probed with PDE4D Polyclonal Antibody, unconjugated at 1:300 overnight at 4°C followed by a conjugated secondary antibody at 1:10000 for 90 minutes at 37°C.