

Datasheet for ABIN6749705  
**anti-WHSC1 antibody (AA 219-268)**



[Go to Product page](#)

2 Images

## Overview

Quantity:	100 µL
Target:	WHSC1
Binding Specificity:	AA 219-268
Reactivity:	Human, Mouse, Rabbit, Dog, Guinea Pig, Horse, Chicken, Monkey
Host:	Rabbit
Clonality:	Polyclonal
Conjugate:	This WHSC1 antibody is un-conjugated
Application:	Western Blotting (WB), Immunohistochemistry (IHC), Immunohistochemistry (Paraffin-embedded Sections) (IHC (p))

## Product Details

Brand:	IHC-plus™
Immunogen:	Synthetic peptide located between aa219-268 of human WHSC1 (O96031). Percent identity by BLAST analysis: Human, Chimpanzee, Gorilla, Gibbon, Monkey, Galago, Marmoset, Horse, Opossum, Turkey, Chicken (100%), Guinea pig (87%), Mouse, Rat, Elephant (85%).  Type of Immunogen: Synthetic peptide
Isotype:	IgG
Specificity:	Human WHSC1
Predicted Reactivity:	Percent identity by BLAST analysis: Human, Horse, Chicken (100%) Guinea pig (87%) Mouse (85%).

## Product Details

Purification: Immunoaffinity purified

## Target Details

Target: WHSC1

Alternative Name: WHSC1 / NSD2 ([WHSC1 Products](#))

Background: Name/Gene ID: WHSC1

Synonyms: WHSC1, NSD2, KIAA1090, TRX5, WHS, Protein trithorax-5, MMSET, REIIBP

Gene ID: 7468

UniProt: [O96028](#)

Pathways: [SARS-CoV-2 Protein Interactome](#)

## Application Details

Application Notes: Approved: IHC, IHC-P (2.5 - 5 µg/mL), WB (0.2 - 1 µg/mL)

Comment: Target Species of Antibody: Human

Restrictions: For Research Use only

## Handling

Format: Lyophilized

Reconstitution: After adding water, will consist of PBS buffer with 2 % sucrose

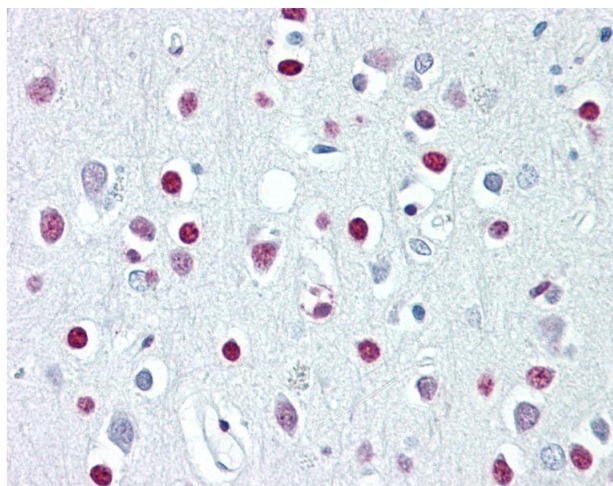
Concentration: Lot specific

Buffer: Lyophilized from PBS with 2 % sucrose

Handling Advice: Avoid repeat freeze-thaw cycles.

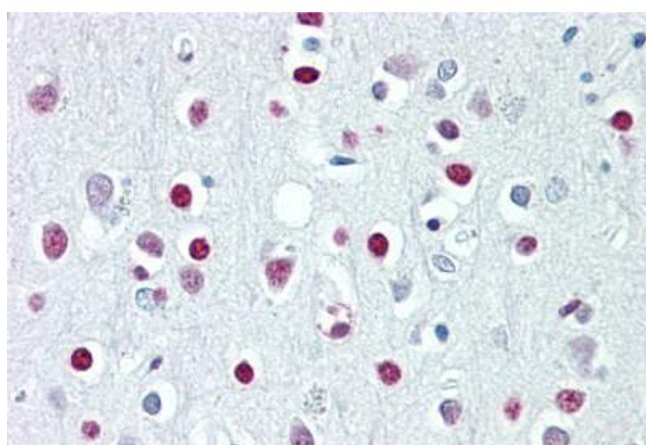
Storage: 4 °C, -20 °C

Storage Comment: Long term: -20°C, the use of 50% glycerol is recommended if storing aliquots in -20°C for long term use (up to 1 year)  
Short term (less than 1 week): 4°C. Avoid freeze-thaw cycles.



#### Immunohistochemistry

**Image 1.** Anti-WHSC1 / NSD2 antibody IHC of human brain, cortex. Immunohistochemistry of formalin-fixed, paraffin-embedded tissue after heat-induced antigen retrieval. Antibody dilution 2.5-5 ug/ml. This image was taken for the unconjugated form of this produ ...



#### Immunohistochemistry

**Image 2.** Anti-WHSC1 / NSD2 antibody IHC staining of human brain, cortex. Immunohistochemistry of formalin-fixed, paraffin-embedded tissue after heat-induced antigen retrieval. Antibody ABIN1105042 dilution 38474 ug/ml.