



[Go to Product page](#)

Datasheet for ABIN6749707  
**anti-PARP6 antibody (AA 431-480)**

2 Images

Overview

Quantity:	100 µL
Target:	PARP6
Binding Specificity:	AA 431-480
Reactivity:	Human, Mouse, Rat, Dog, Cow, Guinea Pig, Horse, Rabbit, Zebrafish (Danio rerio), Chicken, Monkey, Pig, Bat, Xenopus laevis
Host:	Rabbit
Clonality:	Polyclonal
Conjugate:	This PARP6 antibody is un-conjugated
Application:	Western Blotting (WB), Immunohistochemistry (IHC), Immunohistochemistry (Paraffin-embedded Sections) (IHC (p))

Product Details

Brand:	IHC-plus™
Immunogen:	Synthetic peptide located between aa431-480 of human PARP6 (Q2NL67, NP_064599). Percent identity by BLAST analysis: Human, Chimpanzee, Gorilla, Orangutan, Gibbon, Monkey, Galago, Marmoset, Mouse, Rat, Elephant, Panda, Dog, Bovine, Bat, Rabbit, Horse, Pig, Opossum, Guinea pig, Turkey, Zebra finch, Chicken, Xenopus (100%), Zebrafish (85%), Platypus, Lizard (83%).  Type of Immunogen: Synthetic peptide
Isotype:	IgG
Specificity:	Human PARP6

## Product Details

---

Predicted Reactivity:	Percent identity by BLAST analysis: Human, Mouse, Rat, Dog, Rabbit, Horse, Pig, Guinea pig, Chicken (100%) Zebrafish (85%).
Purification:	Immunoaffinity purified

## Target Details

---

Target:	PARP6
Alternative Name:	PARP6 ( <a href="#">PARP6 Products</a> )
Background:	Name/Gene ID: PARP6  Synonyms: PARP6, ARTD17, PARP-6-C, Poly [ADP-ribose] polymerase 6, PARP-6, PARP-6-B1, PART17
Gene ID:	56965
NCBI Accession:	<a href="#">NP_064599</a>
UniProt:	<a href="#">Q2NL67</a>

## Application Details

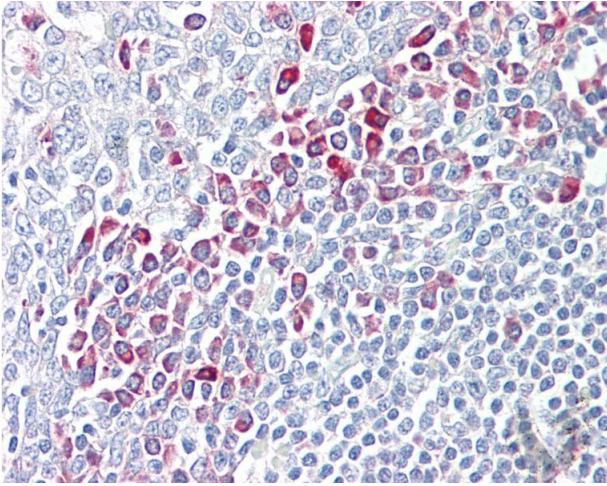
---

Application Notes:	Approved: IHC, IHC-P (2.5 - 5 µg/mL), WB (0.2 - 1 µg/mL)
Comment:	Target Species of Antibody: Human
Restrictions:	For Research Use only

## Handling

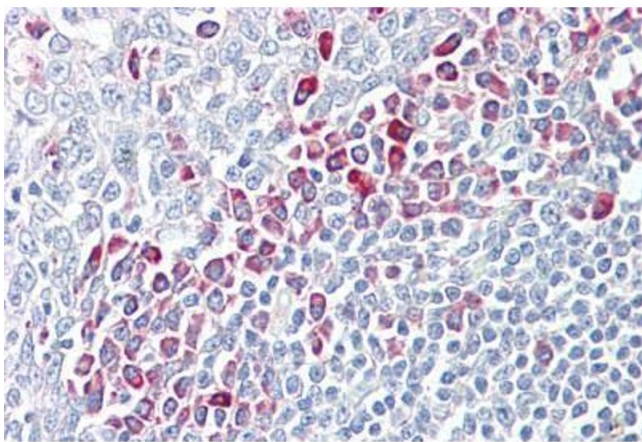
---

Format:	Lyophilized
Reconstitution:	After adding water, will consist of PBS buffer with 2 % sucrose
Concentration:	Lot specific
Buffer:	Lyophilized from PBS with 2 % sucrose
Handling Advice:	Avoid repeat freeze-thaw cycles.
Storage:	4 °C,-20 °C
Storage Comment:	Long term: -20°C, the use of 50% glycerol is recommended if storing aliquots in -20°C for long term use (up to 1 year)  Short term (less than 1 week): 4°C. Avoid freeze-thaw cycles.



#### Immunohistochemistry

**Image 1.** Anti-PARP6 antibody IHC of human tonsil. Immunohistochemistry of formalin-fixed, paraffin-embedded tissue after heat-induced antigen retrieval. Antibody dilution 2.5-5 ug/ml. This image was taken for the unconjugated form of this product. Other form ...



#### Immunohistochemistry

**Image 2.** Anti-PARP6 antibody IHC staining of human tonsil. Immunohistochemistry of formalin-fixed, paraffin-embedded tissue after heat-induced antigen retrieval. Antibody ABIN1103496 dilution 38474 ug/ml.