

Datasheet for ABIN6749711
anti-KCNH3 antibody (AA 684-733)[Go to Product page](#)

2 Images

Overview

Quantity:	100 µL
Target:	KCNH3 (Kcnh3)
Binding Specificity:	AA 684-733
Reactivity:	Human, Cow, Dog, Guinea Pig, Horse, Monkey, Pig
Host:	Rabbit
Clonality:	Polyclonal
Conjugate:	This KCNH3 antibody is un-conjugated
Application:	Western Blotting (WB), Immunohistochemistry (IHC), Immunohistochemistry (Paraffin-embedded Sections) (IHC (p))

Product Details

Brand:	IHC-plus™
Immunogen:	Synthetic peptide located between aa684-733 of human KCNH3 (Q9ULD8, NP_036416). Percent identity by BLAST analysis: Human, Chimpanzee, Gorilla, Gibbon, Monkey, Marmoset (100%), Galago, Mouse, Rat, Rabbit (92%), Elephant, Dog, Bovine, Horse, Pig, Guinea pig (85%). Type of Immunogen: Synthetic peptide
Isotype:	IgG
Specificity:	Human KCNH3 / Kv12.2
Predicted Reactivity:	Percent identity by BLAST analysis: Human (100%) Mouse, Rat (92%) Dog, Bovine, Horse, Pig, Guinea pig (85%).

Product Details

Purification: Immunoaffinity purified

Target Details

Target: KCNH3 (Kcnh3)

Alternative Name: KCNH3 / Kv12.2 ([Kcnh3 Products](#))

Background: Name/Gene ID: KCNH3
Subfamily: Potassium channel - Eag-related
Family: Ion Channel

Synonyms: KCNH3, BEC1, ELK channel 2, Ether-a-go-go-like, KIAA1282, ELK2, Kv12.2, Melk2

Gene ID: 23416

NCBI Accession: [NP_036416](#)

UniProt: [Q9ULD8](#)

Application Details

Application Notes: Approved: IHC, IHC-P (5 - 10 µg/mL), WB (0.2 - 1 µg/mL)

Usage: Western Blot: Suggested dilution at 1 µg/mL in 5 % skim milk / PBS buffer, and HRP conjugated anti-Rabbit IgG should be diluted in 1: 50,000 - 100,000 as second antibody. ELISA titer in peptide based assay: 1:62500.

Comment: Target Species of Antibody: Human

Restrictions: For Research Use only

Handling

Format: Lyophilized

Reconstitution: Distilled water

Concentration: Lot specific

Buffer: Lyophilized from PBS with 2 % sucrose

Handling Advice: Avoid repeat freeze-thaw cycles.

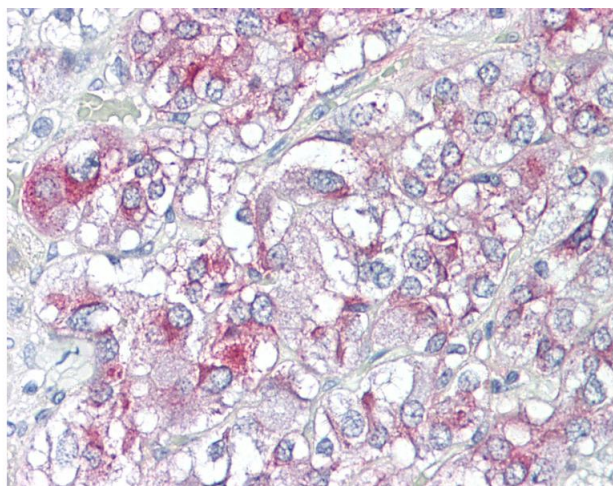
Storage: 4 °C, -20 °C

Handling

Storage Comment: Long term: -20°C, the use of 50% glycerol is recommended if storing aliquots in -20°C for long term use (up to 1 year)

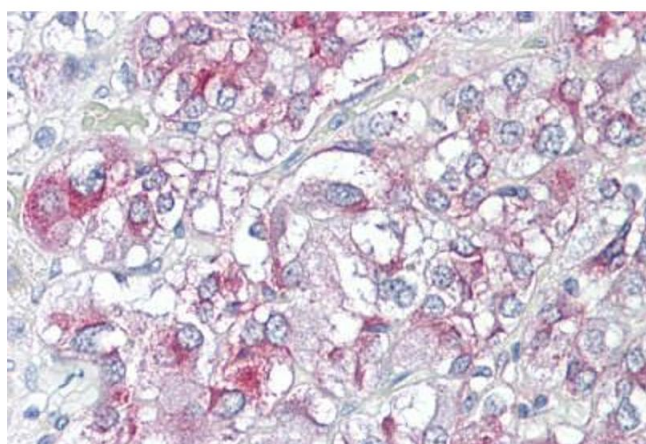
Short term (less than 1 week): 4°C. Avoid freeze-thaw cycles.

Images



Immunohistochemistry

Image 1. Anti-KCNH3 antibody IHC of human adrenal. Immunohistochemistry of formalin-fixed, paraffin-embedded tissue after heat-induced antigen retrieval. Antibody dilution 5-10 ug/ml. This image was taken for the unconjugated form of this product. Other form ...



Immunohistochemistry

Image 2. Anti-KCNH3 antibody IHC staining of human adrenal. Immunohistochemistry of formalin-fixed, paraffin-embedded tissue after heat-induced antigen retrieval. Antibody ABIN1102695 dilution 41552 ug/ml.