



Datasheet for ABIN6749717  
**anti-KARS antibody (C-Term)**



[Go to Product page](#)

3 Images

Overview

Quantity:	100 µL
Target:	KARS
Binding Specificity:	C-Term
Reactivity:	Human, Mouse, Guinea Pig, Horse, Pig, Rabbit, Monkey
Host:	Rabbit
Clonality:	Polyclonal
Conjugate:	This KARS antibody is un-conjugated
Application:	Western Blotting (WB), Immunohistochemistry (IHC), Immunohistochemistry (Paraffin-embedded Sections) (IHC (p))

Product Details

Brand:	IHC-plus™
Immunogen:	Synthetic peptide from C-Terminus of human KARS (Q15046, NP_005539). Percent identity by BLAST analysis: Human, Chimpanzee, Gorilla, Orangutan, Monkey (100%), Gibbon, Bovine (92%), Horse (87%), Marmoset, Bat, Rabbit, Pig (85%), Guinea pig (84%), Mouse (78%).  Type of Immunogen: Synthetic peptide
Isotype:	IgG
Specificity:	Human KARS
Predicted Reactivity:	Percent identity by BLAST analysis: Human (100%) Bovine (92%) Horse (87%) Rabbit, Pig (85%) Guinea pig (84%).

## Product Details

---

Purification: Immunoaffinity purified

## Target Details

---

Target: KARS

Alternative Name: KARS ([KARS Products](#))

Background: Name/Gene ID: KARS

Synonyms: KARS, CMTRIB, KARS1, KARS2, KRS, Lysine--tRNA ligase, LysRS, KIAA0070, Lysine tRNA ligase, Lysyl-tRNA synthetase

Gene ID: 3735

NCBI Accession: [NP\\_005539](#)

UniProt: [Q15046](#)

## Application Details

---

Application Notes: Approved: IHC, IHC-P (5 - 10 µg/mL), WB (0.2 - 1 µg/mL)

Comment: Target Species of Antibody: Human

Restrictions: For Research Use only

## Handling

---

Format: Lyophilized

Reconstitution: After adding water, will consist of PBS buffer with 2 % sucrose

Concentration: Lot specific

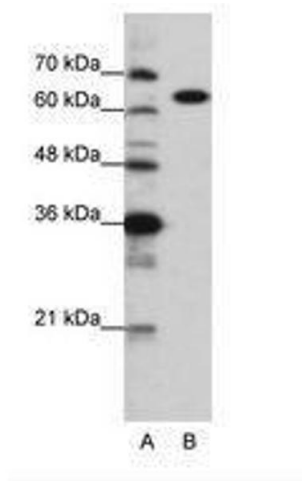
Buffer: Lyophilized from PBS with 2 % sucrose

Handling Advice: Avoid repeat freeze-thaw cycles.

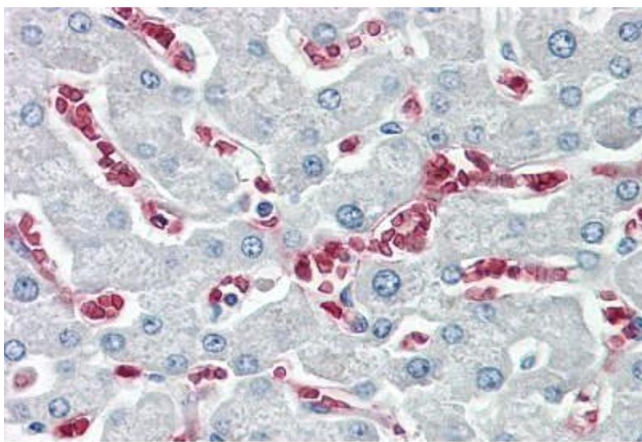
Storage: 4 °C, -20 °C

Storage Comment: Long term: -20°C, the use of 50% glycerol is recommended if storing aliquots in -20°C for long term use (up to 1 year)

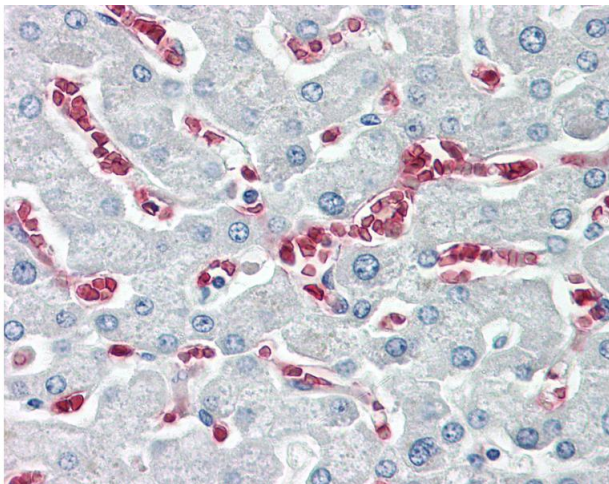
Short term (less than 1 week): 4°C. Avoid freeze-thaw cycles.



**Image 1.**



**Image 2.**



### Immunohistochemistry

**Image 3.** Anti-KARS antibody IHC of human liver. Immunohistochemistry of formalin-fixed, paraffin-embedded tissue after heat-induced antigen retrieval. Antibody dilution 5-10 ug/ml. This image was taken for the unconjugated form of this product. Other forms h ...