

Datasheet for ABIN6749721
anti-SLC22A6 antibody (C-Term)



[Go to Product page](#)

3 Images

Overview

| | |
|----------------------|--|
| Quantity: | 100 µL |
| Target: | SLC22A6 |
| Binding Specificity: | C-Term |
| Reactivity: | Human, Rat, Mouse, Horse, Rabbit, Cow, Guinea Pig, Pig |
| Host: | Rabbit |
| Clonality: | Polyclonal |
| Conjugate: | This SLC22A6 antibody is un-conjugated |
| Application: | Western Blotting (WB), Immunohistochemistry (IHC), Immunohistochemistry (Paraffin-embedded Sections) (IHC (p)) |

Product Details

| | |
|-----------------------|--|
| Brand: | IHC-plus™ |
| Immunogen: | Synthetic peptide from C-Terminus of human SLC22A6 (Q4U2R8, NP_004781). Percent identity by BLAST analysis: Human, Chimpanzee, Gorilla, Orangutan, Gibbon, Monkey, Galago, Mouse, Rat, Bovine, Rabbit, Horse, Pig (100%), Marmoset, Elephant, Panda, Dog (92%), Guinea pig (85%), Salmon, Zebrafish (84%). Type of Immunogen: Synthetic peptide |
| Isotype: | IgG |
| Specificity: | Human SLC22A6 |
| Predicted Reactivity: | Percent identity by BLAST analysis: Rat, Horse (100%) Dog (92%) Guinea pig (85%). |

Product Details

Purification: Immunoaffinity purified

Target Details

Target: SLC22A6

Alternative Name: SLC22A6 / OAT1 ([SLC22A6 Products](#))

Background: Name/Gene ID: SLC22A6

Subfamily: Organic anion transporter

Family: Transporter

Synonyms: SLC22A6, HOAT1, HPAHT, OAT1, Organic anion transporter 1, P-aminohippurate transporter, PAHT, PAH transporter, ROAT1, HROAT1

Gene ID: 9356

NCBI Accession: [NP_004781](#)

UniProt: [Q4U2R8](#)

Pathways: [Dicarboxylic Acid Transport](#)

Application Details

Application Notes: Approved: IHC, IHC-P (5 - 10 µg/mL), WB

Usage: ELISA titer using peptide based assay: 1:312500. Western Blot: Suggested dilution at 1 µg/mL in 5 % skim milk / PBS buffer, and HRP conjugated anti-Rabbit IgG should be diluted in 1:50000 - 100000 as second antibody.

Comment: Target Species of Antibody: Human

Restrictions: For Research Use only

Handling

Format: Lyophilized

Reconstitution: Distilled Water.

Concentration: Lot specific

Buffer: Lyophilized from PBS with 2 % sucrose

Handling

Handling Advice: Avoid repeat freeze-thaw cycles.

Storage: 4 °C, -20 °C

Storage Comment: Long term: -20°C, the use of 50% glycerol is recommended if storing aliquots in -20°C for long term use (up to 1 year)

Short term (less than 1 week): 4°C. Avoid freeze-thaw cycles.

Images

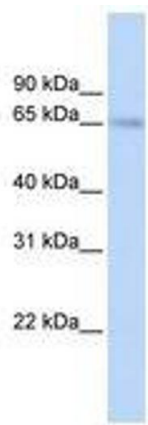


Image 1.

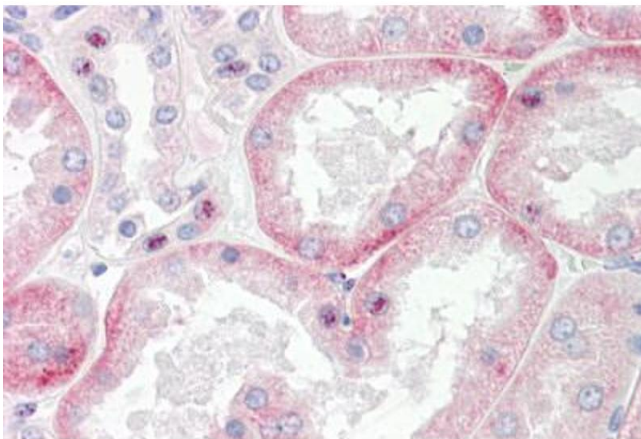
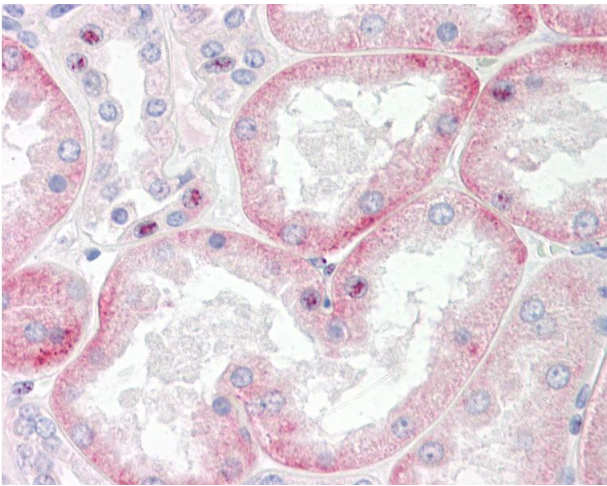


Image 2.



Immunohistochemistry

Image 3. Anti-SLC22A6 / NKT antibody IHC of human kidney. Immunohistochemistry of formalin-fixed, paraffin-embedded tissue after heat-induced antigen retrieval. Antibody dilution 5-10 ug/ml. This image was taken for the unconjugated form of this product. Oth ...