



Datasheet for ABIN6749723
anti-CYP2B6 antibody (AA 215-264)



[Go to Product page](#)

3 Images

Overview

Quantity:	100 µL
Target:	CYP2B6
Binding Specificity:	AA 215-264
Reactivity:	Human
Host:	Rabbit
Clonality:	Polyclonal
Conjugate:	This CYP2B6 antibody is un-conjugated
Application:	Western Blotting (WB), Immunohistochemistry (IHC), Immunohistochemistry (Paraffin-embedded Sections) (IHC (p))

Product Details

Brand:	IHC-plus™
Immunogen:	Synthetic peptide located between aa215-264 of human CYP2B6 (P20813, NP_000758). Percent identity by BLAST analysis: Human, Gorilla, Monkey (100%), Gibbon, Mouse, Rat (92%), Dog (91%), Guinea pig (81%). Type of Immunogen: Synthetic peptide
Isotype:	IgG
Specificity:	Human CYP2B6
Predicted Reactivity:	Percent identity by BLAST analysis: Human (100%).
Purification:	Immunoaffinity purified

Target Details

Target:	CYP2B6
Alternative Name:	CYP2B6 (CYP2B6 Products)
Background:	Name/Gene ID: CYP2B6 Family: Cytochrome P450 Synonyms: CYP2B6, CPB6, CYP2B, CYP2B7P, EFVM, CYP2B7, Cytochrome p450 I1b6, p450, CYP11B6, Cytochrome P450 2B6, Cytochrome P450 I1B1, I1B1
Gene ID:	1555
NCBI Accession:	NP_000758
UniProt:	P20813

Application Details

Application Notes:	Approved: IHC, IHC-P (5 - 7.5 µg/mL), WB (0.2 - 1 µg/mL) Usage: Western Blot: Suggested dilution at 1 µg/mL in 5 % skim milk / PBS buffer, and HRP conjugated anti-Rabbit IgG should be diluted in 1: 50,000 - 100,000 as second antibody. ELISA titer in peptide based assay: 1:312500.
Comment:	Target Species of Antibody: Human
Restrictions:	For Research Use only

Handling

Format:	Lyophilized
Reconstitution:	Distilled water
Concentration:	Lot specific
Buffer:	Lyophilized from PBS with 2 % sucrose
Handling Advice:	Avoid repeat freeze-thaw cycles.
Storage:	4 °C, -20 °C
Storage Comment:	Long term: -20°C, the use of 50% glycerol is recommended if storing aliquots in -20°C for long term use (up to 1 year) Short term (less than 1 week): 4°C. Avoid freeze-thaw cycles.

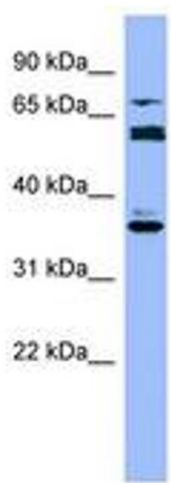


Image 1.

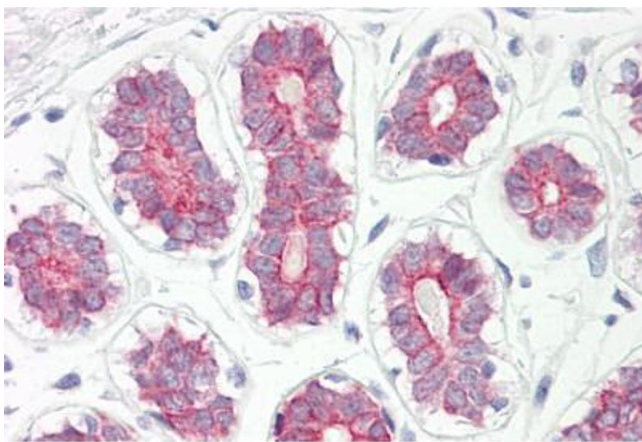
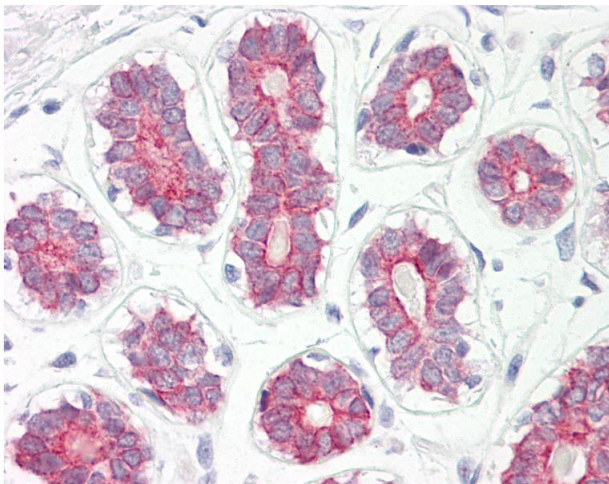


Image 2.



Immunohistochemistry

Image 3. Anti-CYP2B6 antibody IHC of human breast. Immunohistochemistry of formalin-fixed, paraffin-embedded tissue after heat-induced antigen retrieval. Antibody dilution 5-7.5 ug/ml. This image was taken for the unconjugated form of this product. Other for ...