

Datasheet for ABIN6749724
anti-SAA4 antibody (C-Term)

3 Images

[Go to Product page](#)

Overview

Quantity:	100 µL
Target:	SAA4
Binding Specificity:	C-Term
Reactivity:	Human, Cow
Host:	Rabbit
Clonality:	Polyclonal
Conjugate:	This SAA4 antibody is un-conjugated
Application:	Western Blotting (WB), Immunohistochemistry (IHC), Immunohistochemistry (Paraffin-embedded Sections) (IHC (p))

Product Details

Brand:	IHC-plus™
Immunogen:	Synthetic peptide from C-Terminus of human SAA4 (P35542, NP_006503). Percent identity by BLAST analysis: Human, Chimpanzee, Gorilla (100%), Monkey (92%), Bovine (84%), Trout (83%), Mouse (76%). Type of Immunogen: Synthetic peptide
Specificity:	Human SAA4
Predicted Reactivity:	Percent identity by BLAST analysis: Human (100%) Bovine (84%).
Purification:	Immunoaffinity purified

Target Details

Target:	SAA4
Alternative Name:	SAA4 (SAA4 Products)
Background:	Name/Gene ID: SAA4 Synonyms: SAA4, CSAA, Serum amyloid A4, constitutive, Serum amyloid A-4 protein, C-SAA
Gene ID:	6291
NCBI Accession:	NP_006503
UniProt:	P35542

Application Details

Application Notes:	Approved: IHC, IHC-P (5 - 10 µg/mL), WB (0.2 - 1 µg/mL) Usage: Western Blot: Suggested dilution at 1 µg/mL in 5 % skim milk / PBS buffer, and HRP conjugated anti-Rabbit IgG should be diluted in 1: 50,000 - 100,000 as secondary antibody.
Comment:	Target Species of Antibody: Human
Restrictions:	For Research Use only

Handling

Format:	Lyophilized
Reconstitution:	Distilled water
Concentration:	Lot specific
Buffer:	Lyophilized from PBS with 2 % sucrose
Handling Advice:	Avoid repeat freeze-thaw cycles.
Storage:	4 °C, -20 °C
Storage Comment:	Long term: -20°C, the use of 50% glycerol is recommended if storing aliquots in -20°C for long term use (up to 1 year) Short term (less than 1 week): 4°C. Avoid freeze-thaw cycles.

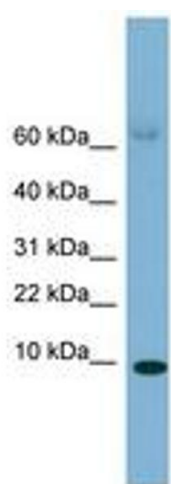


Image 1.

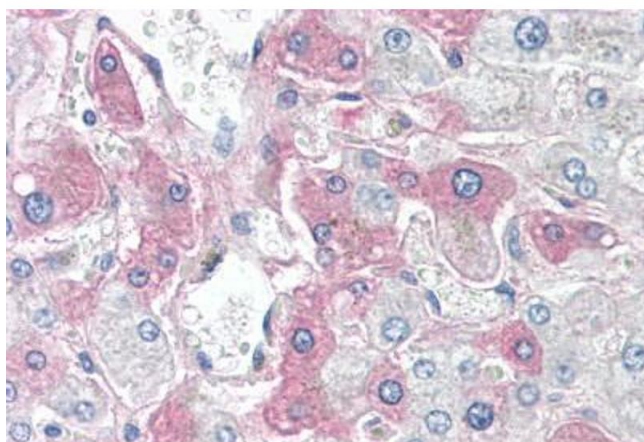
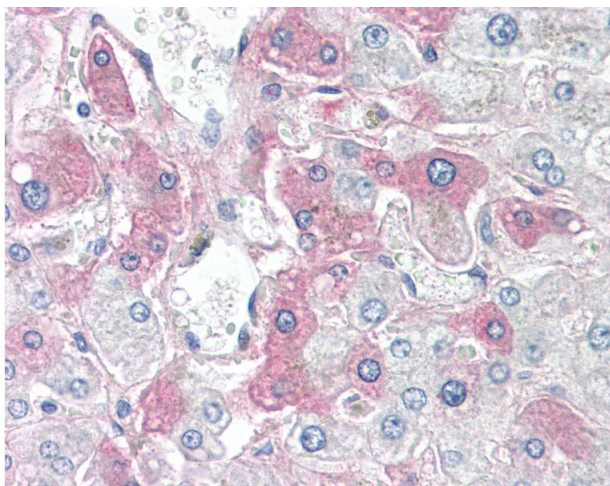


Image 2.



Immunohistochemistry

Image 3. Anti-SAA4 antibody IHC of human liver. Immunohistochemistry of formalin-fixed, paraffin-embedded tissue after heat-induced antigen retrieval. Antibody dilution 5-10 ug/ml. This image was taken for the unconjugated form of this product. Other forms h ...