

Datasheet for ABIN6749725
anti-ARPP21 antibody (AA 74-123)

3 Images

[Go to Product page](#)

Overview

Quantity:	100 µL
Target:	ARPP21
Binding Specificity:	AA 74-123
Reactivity:	Human, Mouse, Rat, Horse, Rabbit, Dog, Cow, Pig
Host:	Rabbit
Clonality:	Polyclonal
Conjugate:	This ARPP21 antibody is un-conjugated
Application:	Western Blotting (WB), Immunohistochemistry (IHC), Immunohistochemistry (Paraffin-embedded Sections) (IHC (p))

Product Details

Brand:	IHC-plus™
Immunogen:	<p>Synthetic peptide located between aa74-123 of human ARPP-21 (Q9UBL0, NP_057384).</p> <p>Percent identity by BLAST analysis: Human, Chimpanzee, Gorilla, Gibbon, Galago, Mouse, Rat, Elephant, Panda, Dog, Rabbit, Horse, Pig (100%), Marmoset, Bat, Guinea pig, Turkey, Chicken, Lizard (92%), Platypus (84%).</p> <p>Type of Immunogen: Synthetic peptide</p>
Isotype:	IgG
Specificity:	Human ARPP21 / ARPP-21 isoform 1
Predicted Reactivity:	Percent identity by BLAST analysis: Human, Mouse, Rat, Bovine, Dog, Poplar (100%) Chicken

Product Details

(92%).

Purification: Immunoaffinity purified

Target Details

Target: ARPP21

Alternative Name: RCS / ARPP-21 ([ARPP21 Products](#))

Background: Name/Gene ID: ARPP21

Synonyms: ARPP21, ARPP-21, RCS, R3H domain containing 3, TARPP, R3HDM3

Gene ID: 10777

NCBI Accession: [NP_057384](#)

UniProt: [Q9UBL0](#)

Application Details

Application Notes: Approved: IHC, IHC-P (5 - 10 µg/mL), WB

Usage: ELISA titer using peptide based assay: 1:62500. Western Blot: Suggested dilution at 1 µg/mL in 5 % skim milk / PBS buffer, and HRP conjugated anti-Rabbit IgG should be diluted in 1:50000 - 100000 as second antibody.

Comment: Target Species of Antibody: Human

Restrictions: For Research Use only

Handling

Format: Lyophilized

Reconstitution: Distilled Water.

Concentration: Lot specific

Buffer: Lyophilized from PBS with 2 % sucrose

Handling Advice: Avoid repeat freeze-thaw cycles.

Storage: 4 °C, -20 °C

Storage Comment: Long term: -20°C, the use of 50% glycerol is recommended if storing aliquots in -20°C for long

term use (up to 1 year)
Short term (less than 1 week): 4°C. Avoid freeze-thaw cycles.

Images

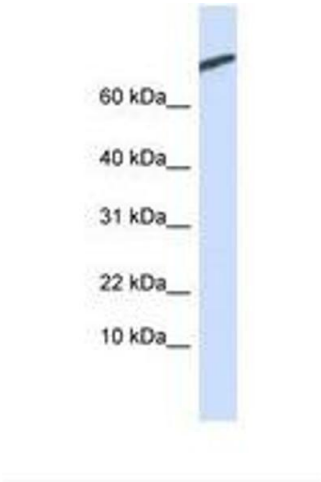


Image 1.

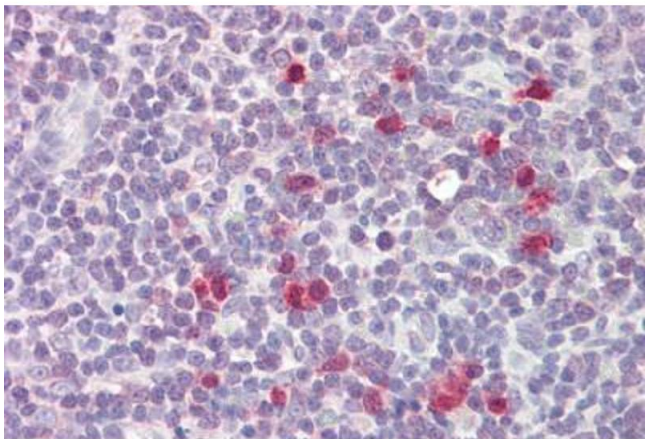
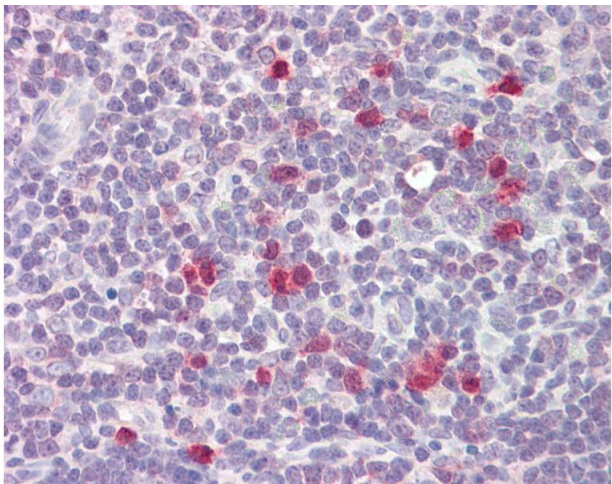


Image 2.



Immunohistochemistry

Image 3. Anti-RCS / ARPP-21 antibody IHC of human thymus. Immunohistochemistry of formalin-fixed, paraffin-embedded tissue after heat-induced antigen retrieval. Antibody dilution 5-10 ug/ml. This image was taken for the unconjugated form of this product. Oth ...