



[Go to Product page](#)

Datasheet for ABIN6749735
anti-BCAP31 antibody (C-Term)

3 Images

Overview

Quantity:	100 µL
Target:	BCAP31
Binding Specificity:	C-Term
Reactivity:	Human, Mouse, Rat, Dog, Monkey, Hamster
Host:	Rabbit
Clonality:	Polyclonal
Conjugate:	This BCAP31 antibody is un-conjugated
Application:	Western Blotting (WB), Immunohistochemistry (IHC), Immunohistochemistry (Paraffin-embedded Sections) (IHC (p))

Product Details

Brand:	IHC-plus™
Immunogen:	Synthetic peptide from C-Terminus of human BCAP31 (P51572, NP_005736). Percent identity by BLAST analysis: Human, Gorilla, Orangutan, Gibbon, Monkey, Galago, Marmoset, Mouse, Rat, Hamster, Elephant, Dog (100%), Bovine, Rabbit, Horse, Pig, Guinea pig, Zebrafish (92%), Opossum, Lizard (91%), Xenopus, Salmon, Stickleback, Pike (84%), Bat, Platypus (83%). Type of Immunogen: Synthetic peptide
Specificity:	Human BCAP31 / BAP31
Predicted Reactivity:	Percent identity by BLAST analysis: Human, Mouse, Rat, Dog (100%) Bovine, Rabbit, Horse, Pig, Zebrafish (92%) Xenopus (84%).

Product Details

Purification: Immunoaffinity purified

Target Details

Target: BCAP31

Alternative Name: BCAP31 / BAP31 ([BCAP31 Products](#))

Background: Name/Gene ID: BCAP31

Synonyms: BCAP31, 6C6-AG, BCR-associated protein 31, BAP31, BCR-associated protein Bap31, DXS1357E, p28 Bap31, CDM, p28, Protein CDM

Gene ID: 10134

NCBI Accession: [NP_005736](#)

UniProt: [P51572](#)

Pathways: [Positive Regulation of Endopeptidase Activity](#)

Application Details

Application Notes: Approved: IHC, IHC-P (2.5 - 5 µg/mL), WB (0.2 - 1 µg/mL)

Usage: Western Blot: Suggested dilution at 1 µg/mL in 5 % skim milk / PBS buffer, and HRP conjugated anti-Rabbit IgG should be diluted in 1: 50,000 - 100,000 as secondary antibody.

Comment: Target Species of Antibody: Human

Restrictions: For Research Use only

Handling

Format: Lyophilized

Reconstitution: Distilled water

Concentration: Lot specific

Buffer: Lyophilized from PBS with 2 % sucrose

Handling Advice: Avoid repeat freeze-thaw cycles.

Storage: 4 °C, -20 °C

Storage Comment: Long term: -20°C, the use of 50% glycerol is recommended if storing aliquots in -20°C for long

term use (up to 1 year)

Short term (less than 1 week): 4°C. Avoid freeze-thaw cycles.



Image 1.

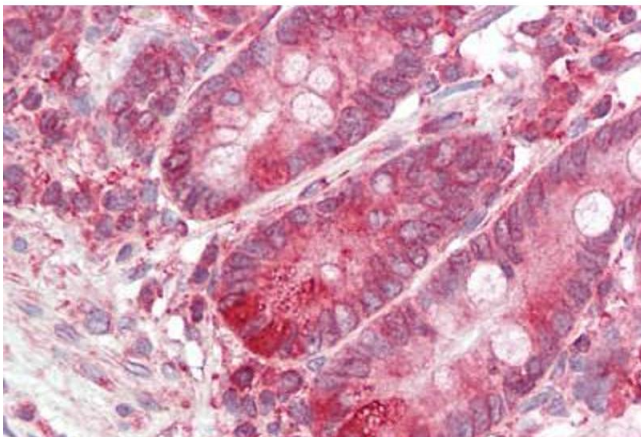
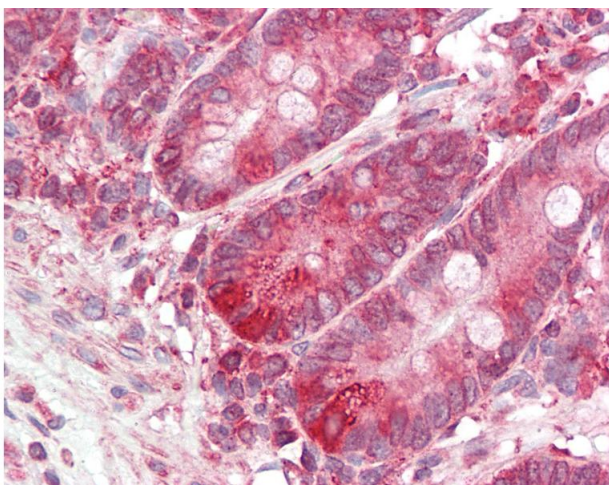


Image 2.



Immunohistochemistry

Image 3. Anti-BCAP31 / BAP31 antibody IHC of human small intestine. Immunohistochemistry of formalin-fixed, paraffin-embedded tissue after heat-induced antigen retrieval. Antibody dilution 2.5-5 ug/ml. This image was taken for the unconjugated form of this p ...