



Datasheet for ABIN6749740
anti-VSIG10 antibody (AA 107-156)



[Go to Product page](#)

3 Images

Overview

Quantity:	100 µL
Target:	VSIG10
Binding Specificity:	AA 107-156
Reactivity:	Human, Mouse, Rat
Host:	Rabbit
Clonality:	Polyclonal
Conjugate:	This VSIG10 antibody is un-conjugated
Application:	Immunohistochemistry (IHC), Western Blotting (WB), Immunohistochemistry (Paraffin-embedded Sections) (IHC (p))

Product Details

Brand:	IHC-plus™
Immunogen:	Synthetic peptide located between aa107-156 of human VSIG10 (Q8N0Z9, NP_061959). Percent identity by BLAST analysis: Human, Gorilla, Mouse, Rat (100%), Gibbon, Marmoset, Dog, Bovine, Rabbit, Horse, Pig (92%), Galago (84%). Type of Immunogen: Synthetic peptide
Isotype:	IgG
Specificity:	Human VSIG10 / FLJ20674
Predicted Reactivity:	Percent identity by BLAST analysis:
Purification:	Immunoaffinity purified

Target Details

Target:	VSIG10
Alternative Name:	VSIG10 (VSIG10 Products)
Background:	Name/Gene ID: VSIG10 Synonyms: VSIG10
Gene ID:	54621
NCBI Accession:	NP_061959
UniProt:	Q8N0Z9

Application Details

Application Notes:	Approved: IHC, IHC-P (2.5 - 5 µg/mL), WB (0.2 - 1 µg/mL) Usage: Western Blot: Suggested dilution at 1 µg/mL in 5 % skim milk / PBS buffer, and HRP conjugated anti-Rabbit IgG should be diluted in 1: 50,000 - 100,000 as second antibody. ELISA titer in peptide based assay: 1:2500.
Comment:	Target Species of Antibody: Human
Restrictions:	For Research Use only

Handling

Format:	Lyophilized
Reconstitution:	Distilled water
Concentration:	Lot specific
Buffer:	Lyophilized from PBS with 2 % sucrose
Handling Advice:	Avoid repeat freeze-thaw cycles.
Storage:	4 °C, -20 °C
Storage Comment:	Long term: -20°C, the use of 50% glycerol is recommended if storing aliquots in -20°C for long term use (up to 1 year) Short term (less than 1 week): 4°C. Avoid freeze-thaw cycles.

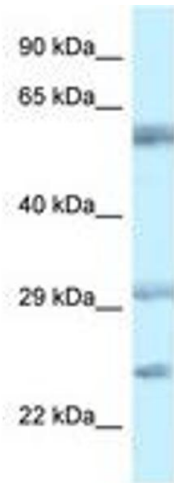


Image 1.

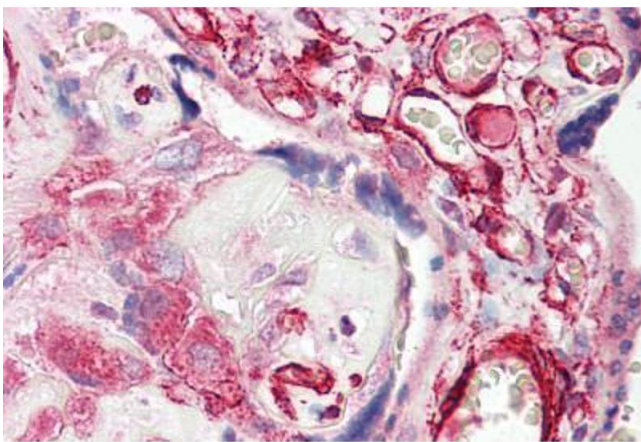
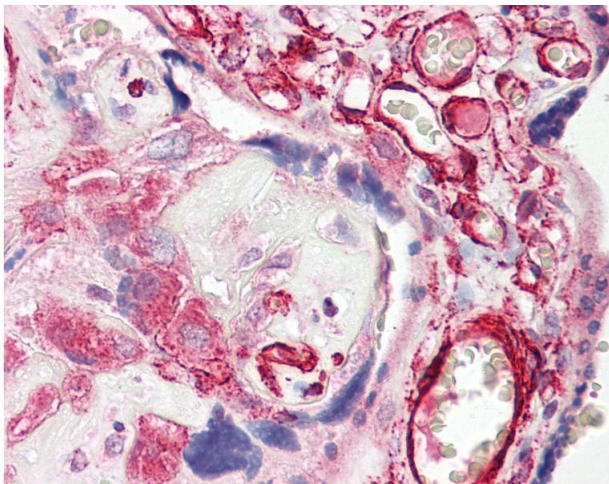


Image 2.



Immunohistochemistry

Image 3. Anti-VSIG10 antibody IHC of human placenta. Immunohistochemistry of formalin-fixed, paraffin-embedded tissue after heat-induced antigen retrieval. Antibody dilution 2.5-5 ug/ml. This image was taken for the unconjugated form of this product. Other f ...