

Datasheet for ABIN6749742
anti-ATP10D antibody (AA 1154-1203)



[Go to Product page](#)

3 Images

Overview

Quantity:	100 µL
Target:	ATP10D
Binding Specificity:	AA 1154-1203
Reactivity:	Human, Mouse, Cow
Host:	Rabbit
Clonality:	Polyclonal
Conjugate:	This ATP10D antibody is un-conjugated
Application:	Western Blotting (WB), Immunohistochemistry (IHC), Immunohistochemistry (Paraffin-embedded Sections) (IHC (p))

Product Details

Brand:	IHC-plus™
Immunogen:	Synthetic peptide located between aa1154-1203 of human ATP10D (Q9P241, NP_065186). Percent identity by BLAST analysis: Human, Gorilla, Gibbon, Monkey (100%), Galago, Marmoset, Elephant, Horse, Pig, Opossum, Guinea pig (92%), Dog, Rabbit (91%), Bovine (85%), Bat (84%), Mouse (78%). Type of Immunogen: Synthetic peptide
Isotype:	IgG
Specificity:	Human ATP10D
Predicted Reactivity:	Percent identity by BLAST analysis: Horse, Pig, Guinea pig (92%) Dog, Rabbit (91%) Bovine

Product Details

(85%).

Purification: Immunoaffinity purified

Target Details

Target: ATP10D

Alternative Name: ATP10D ([ATP10D Products](#))

Background: Name/Gene ID: ATP10D
Subfamily: ATPase - P type, type IV
Family: Transporter

Synonyms: ATP10D, ATPase class V type 10D, ATPase, class V, type 10D, ATPVD, KIAA1487

Gene ID: 57205

NCBI Accession: [NP_065186](#)

UniProt: [Q9P241](#)

Application Details

Application Notes: Approved: IHC, IHC-P (2.5 - 5 µg/mL), WB

Usage: ELISA titer using peptide based assay: 1:1562500. Western Blot: Suggested dilution at 1 µg/mL in 5 % skim milk / PBS buffer, and HRP conjugated anti-Rabbit IgG should be diluted in 1:50000 - 100000 as second antibody.

Comment: Target Species of Antibody: Human

Restrictions: For Research Use only

Handling

Format: Lyophilized

Reconstitution: Distilled Water.

Concentration: Lot specific

Buffer: Lyophilized from PBS with 2 % sucrose

Handling Advice: Avoid repeat freeze-thaw cycles.

Handling

Storage: 4 °C, -20 °C

Storage Comment: Long term: -20°C, the use of 50% glycerol is recommended if storing aliquots in -20°C for long term use (up to 1 year)
Short term (less than 1 week): 4°C. Avoid freeze-thaw cycles.

Images



Image 1.

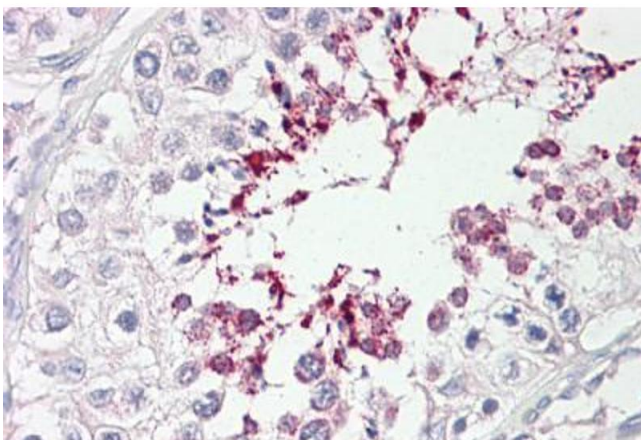
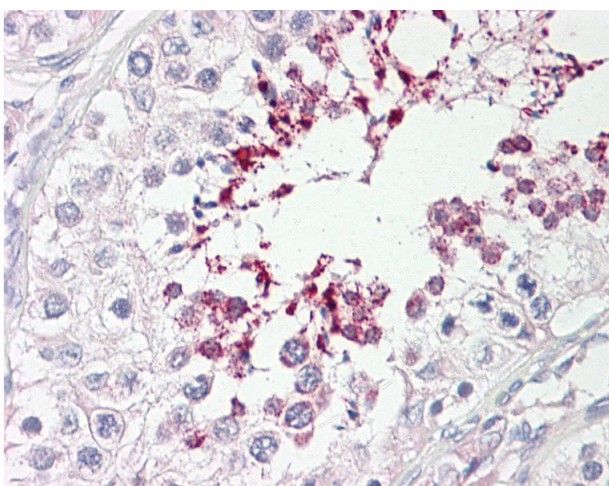


Image 2.



Immunohistochemistry

Image 3. Anti-ATP10D antibody IHC of human testis. Immunohistochemistry of formalin-fixed, paraffin-embedded tissue after heat-induced antigen retrieval. Antibody dilution 2.5-5 ug/ml. This image was taken for the unconjugated form of this product. Other for ...