

Datasheet for ABIN6749744
anti-XYLT2 antibody (AA 722-771)[Go to Product page](#)

3 Images

Overview

Quantity:	100 µL
Target:	XYLT2
Binding Specificity:	AA 722-771
Reactivity:	Mouse, Human, Rat, Dog, Rabbit, Horse, Cow, Guinea Pig, Pig
Host:	Rabbit
Clonality:	Polyclonal
Conjugate:	This XYLT2 antibody is un-conjugated
Application:	Western Blotting (WB), Immunohistochemistry (IHC), Immunohistochemistry (Paraffin-embedded Sections) (IHC (p))

Product Details

Brand:	IHC-plus™
Immunogen:	Synthetic peptide located between aa722-771 of human XYLT2 (Q9H1B5, NP_071450). Percent identity by BLAST analysis: Human, Chimpanzee, Gorilla, Gibbon, Monkey, Galago, Mouse, Rat, Dog, Bovine, Rabbit, Horse, Pig, Guinea pig (100%), Marmoset, Bat (92%), Zebra finch (91%), Elephant, Panda (87%), Lizard (83%). Type of Immunogen: Synthetic peptide
Isotype:	IgG
Specificity:	Human XYLT2
Predicted Reactivity:	Percent identity by BLAST analysis: Human, Mouse, Rat, Dog, Bovine, Horse, Pig, Guinea pig

Product Details

(100%).

Purification: Immunoaffinity purified

Target Details

Target: XYLT2

Alternative Name: XYLT2 ([XYLT2 Products](#))

Background: Name/Gene ID: XYLT2

Synonyms: XYLT2, Protein xylosyltransferase 2, Xylosyltransferase 2, Xylosyltransferase II, XylT-II, XT2, Peptide O-xylosyltransferase 1, PXYLT2, XT-II

Gene ID: 64132

NCBI Accession: [NP_071450](#)

UniProt: [Q9H1B5](#)

Pathways: [Glycosaminoglycan Metabolic Process](#)

Application Details

Application Notes: Approved: IHC, IHC-P (2.5 - 5 µg/mL), WB

Usage: ELISA titer using peptide based assay: 1:312500. Western Blot: Suggested dilution at 1 µg/mL in 5 % skim milk / PBS buffer, and HRP conjugated anti-Rabbit IgG should be diluted in 1:50000 - 100000 as second antibody.

Comment: Target Species of Antibody: Human

Restrictions: For Research Use only

Handling

Format: Lyophilized

Reconstitution: Distilled Water.

Concentration: Lot specific

Buffer: Lyophilized from PBS with 2 % sucrose

Handling Advice: Avoid repeat freeze-thaw cycles.

Handling

Storage: 4 °C, -20 °C

Storage Comment: Long term: -20°C, the use of 50% glycerol is recommended if storing aliquots in -20°C for long term use (up to 1 year)
Short term (less than 1 week): 4°C. Avoid freeze-thaw cycles.

Images



Image 1.

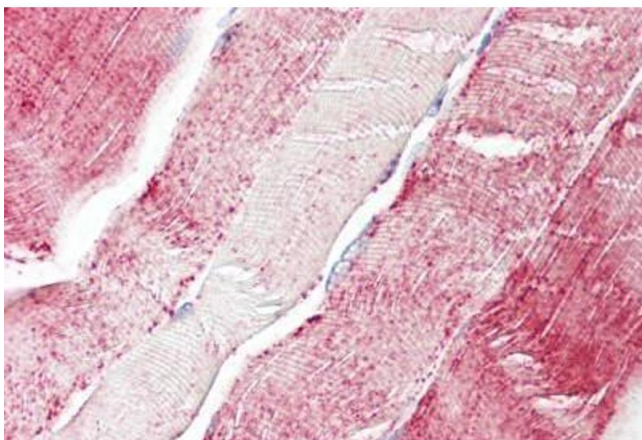
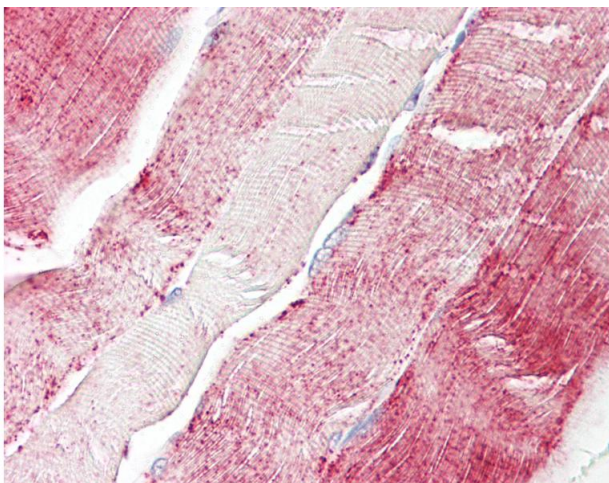


Image 2.



Immunohistochemistry

Image 3. Human, Skeletal muscle: Formalin-Fixed Paraffin-Embedded (FFPE). This image was taken for the unconjugated form of this product. Other forms have not been tested.