

Datasheet for ABIN6749751 anti-IFT172 antibody (AA 360-409)



[Go to Product page](#)

3 Images

Overview

Quantity:	100 µL
Target:	IFT172
Binding Specificity:	AA 360-409
Reactivity:	Human, Mouse, Cow, Dog, Rat, Guinea Pig, Horse, Rabbit, Bat, Monkey
Host:	Rabbit
Clonality:	Polyclonal
Conjugate:	This IFT172 antibody is un-conjugated
Application:	Western Blotting (WB), Immunohistochemistry (Paraffin-embedded Sections) (IHC (p)), Immunohistochemistry (IHC)

Product Details

Brand:	IHC-plus™
Immunogen:	Synthetic peptide located between aa360-409 of human IFT172 (Q9UG01, NP_056477). Percent identity by BLAST analysis: Human, Chimpanzee, Gibbon, Monkey, Marmoset, Mouse, Rat, Elephant, Dog, Bovine, Bat, Rabbit, Horse, Opossum, Guinea pig, Platypus (100%), Galago, Xenopus, Stickleback, Zebrafish (92%), Turkey, Zebra finch, Sparrow, Chicken (85%). Type of Immunogen: Synthetic peptide
Isotype:	IgG
Specificity:	Human IFT172
Predicted Reactivity:	Percent identity by BLAST analysis: Human, Dog, Horse, Guinea pig (100%) Zebrafish (92%)

Product Details

Chicken (85%).

Purification: Immunoaffinity purified

Target Details

Target: IFT172

Alternative Name: IFT172 ([IFT172 Products](#))

Background: Name/Gene ID: IFT172

Synonyms: IFT172, KIAA1179, Osm-1, Wim, SLB, Wimple homolog

Gene ID: 26160

NCBI Accession: [NP_056477](#)

UniProt: [Q9UG01](#)

Application Details

Application Notes: Approved: IHC, IHC-P (2.5 - 5 µg/mL), WB

Usage: ELISA titer using peptide based assay: 1:312500. Western Blot: Suggested dilution at 1 µg/mL in 5 % skim milk / PBS buffer, and HRP conjugated anti-Rabbit IgG should be diluted in 1:50000 - 100000 as second antibody.

Comment: Target Species of Antibody: Human

Restrictions: For Research Use only

Handling

Format: Lyophilized

Reconstitution: Distilled Water.

Concentration: Lot specific

Buffer: Lyophilized from PBS with 2 % sucrose

Handling Advice: Avoid repeat freeze-thaw cycles.

Storage: 4 °C, -20 °C

Storage Comment: Long term: -20°C, the use of 50% glycerol is recommended if storing aliquots in -20°C for long

Handling

term use (up to 1 year)
Short term (less than 1 week): 4°C. Avoid freeze-thaw cycles.

Images

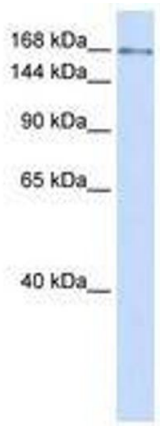


Image 1.

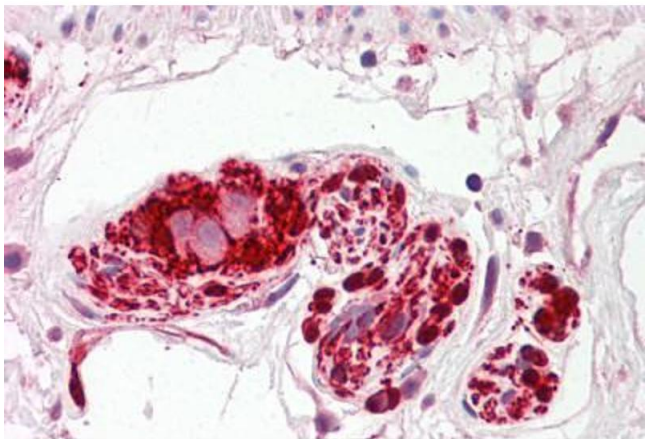
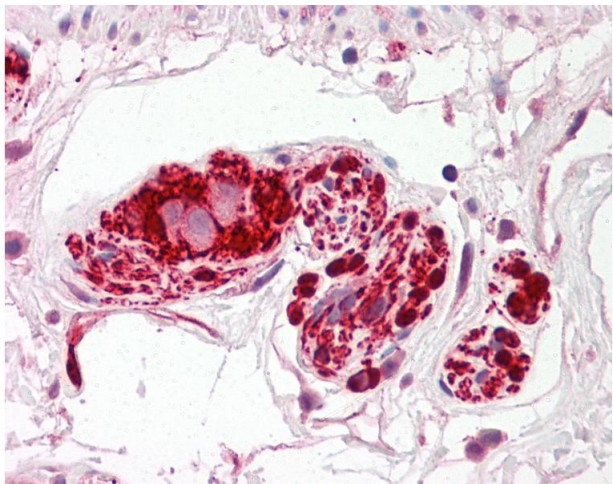


Image 2.



Immunohistochemistry

Image 3. Anti-IFT172 antibody IHC of human colon, submucosal plexus. Immunohistochemistry of formalin-fixed, paraffin-embedded tissue after heat-induced antigen retrieval. Antibody dilution 2.5-5 ug/ml. This image was taken for the unconjugated form of this ...