

Datasheet for ABIN6749759

anti-BRISC and BRCA1 A Complex Member 1 (BABAM1) (AA 36-85) antibody[Go to Product page](#)

3 Images

Overview

Quantity:	100 µL
Target:	BRISC and BRCA1 A Complex Member 1 (BABAM1)
Binding Specificity:	AA 36-85
Reactivity:	Human, Mouse, Dog, Guinea Pig, Horse, Monkey
Host:	Rabbit
Clonality:	Polyclonal
Conjugate:	Un-conjugated
Application:	Western Blotting (WB), Immunohistochemistry (IHC), Immunohistochemistry (Paraffin-embedded Sections) (IHC (p))

Product Details

Brand:	IHC-plus™
Immunogen:	<p>Synthetic peptide located between aa36-85 of human BABAM1 (Q9NWX8, NP_054892).</p> <p>Percent identity by BLAST analysis: Human, Gorilla, Orangutan, Gibbon, Monkey, Marmoset, Mouse, Panda, Dog, Horse, Guinea pig (100%), Galago, Rat, Elephant, Bovine, Opossum, Xenopus (92%).</p> <p>Type of Immunogen: Synthetic peptide</p>
Isotype:	IgG
Specificity:	Human BABAM1 / HSPC142
Predicted Reactivity:	Percent identity by BLAST analysis: Human, Orangutan, Mouse, Dog (100%) Marmoset, Rat,

Product Details

Bovine, Xenopus (92%).

Purification: Immunoaffinity purified

Target Details

Target: BRISC and BRCA1 A Complex Member 1 (BABAM1)

Alternative Name: BABAM1 / HSPC142 ([BABAM1 Products](#))

Background: Name/Gene ID: BABAM1

Synonyms: BABAM1, C19orf62, NBA1, HSPC142, MERIT40

Gene ID: 29086

NCBI Accession: [NP_054892](#)

UniProt: [Q9NWX8](#)

Pathways: [Positive Regulation of Response to DNA Damage Stimulus](#)

Application Details

Application Notes: Approved: IHC, IHC-P (5 - 7.5 µg/mL), WB

Usage: ELISA titer using peptide based assay: 1:1562500. Western Blot: Suggested dilution at 1 µg/mL in 5 % skim milk / PBS buffer, and HRP conjugated anti-Rabbit IgG should be diluted in 1:50000 - 100000 as second antibody.

Comment: Target Species of Antibody: Human

Restrictions: For Research Use only

Handling

Format: Lyophilized

Reconstitution: Distilled Water.

Concentration: Lot specific

Buffer: Lyophilized from PBS with 2 % sucrose

Handling Advice: Avoid repeat freeze-thaw cycles.

Storage: 4 °C, -20 °C

Handling

Storage Comment: Long term: -20°C, the use of 50% glycerol is recommended if storing aliquots in -20°C for long term use (up to 1 year)

Short term (less than 1 week): 4°C. Avoid freeze-thaw cycles.

Images

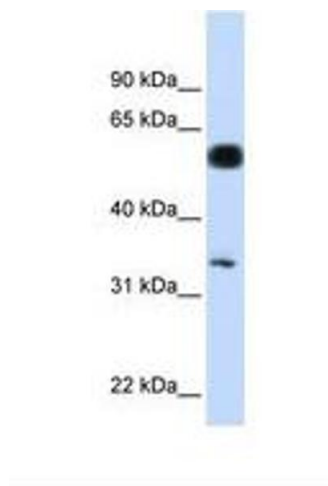


Image 1.

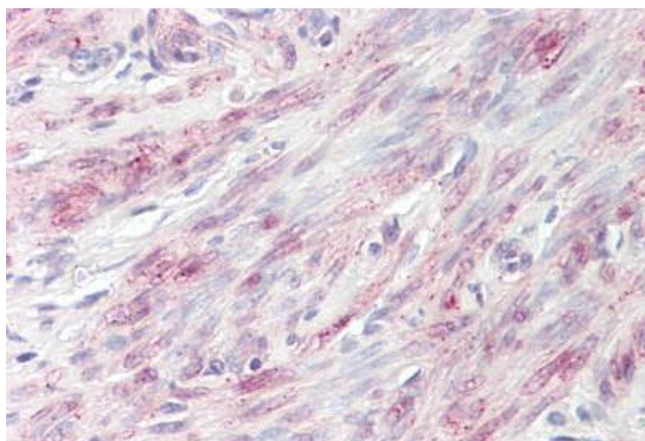
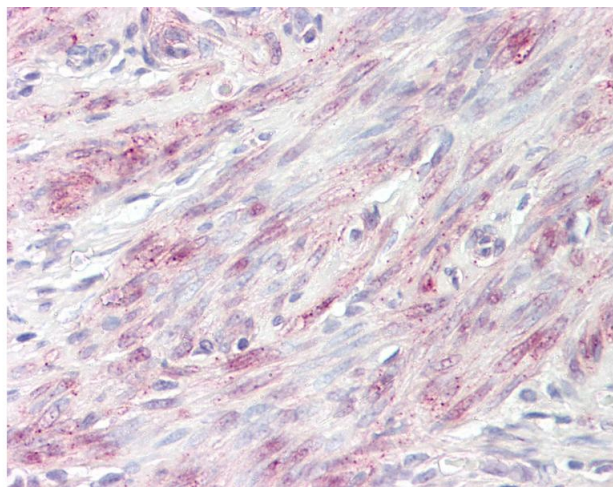


Image 2.



Immunohistochemistry

Image 3. Anti-BABAM1 / HSPC142 antibody IHC of human uterus. Immunohistochemistry of formalin-fixed, paraffin-embedded tissue after heat-induced antigen retrieval. Antibody dilution 5-7.5 ug/ml. This image was taken for the unconjugated form of this product. ...