

Datasheet for ABIN6749760
anti-DKK2 antibody (AA 124-173)

3 Images

[Go to Product page](#)

Overview

Quantity:	100 µL
Target:	DKK2
Binding Specificity:	AA 124-173
Reactivity:	Human, Mouse, Rat, Dog, Horse, Guinea Pig, Rabbit, Monkey, Pig, Bat
Host:	Rabbit
Clonality:	Polyclonal
Conjugate:	This DKK2 antibody is un-conjugated
Application:	Western Blotting (WB), Immunohistochemistry (IHC), Immunohistochemistry (Paraffin-embedded Sections) (IHC (p))

Product Details

Brand:	IHC-plus™
Immunogen:	Synthetic peptide located between aa124-173 of mouse Dkk2 (Q9QYZ8, NP_064661). Percent identity by BLAST analysis: Human, Gorilla, Gibbon, Monkey, Galago, Marmoset, Mouse, Rat, Panda, Dog, Bat, Rabbit, Horse, Pig, Guinea pig (100%), Elephant, Bovine, Opossum, Platypus (92%), Turkey, Chicken (91%), Zebra finch (83%). Type of Immunogen: Synthetic peptide
Specificity:	Mouse DKK2
Predicted Reactivity:	Percent identity by BLAST analysis: Human, Mouse, Rat, Dog, Pig (100%) Bovine (92%) Chicken (91%).

Product Details

Purification: Immunoaffinity purified

Target Details

Target: DKK2

Alternative Name: DKK2 ([DKK2 Products](#))

Background: Name/Gene ID: DKK2

Synonyms: DKK2, DKK-2, Dickkopf homolog 2, Dickkopf related protein-2, HDkk-2, Dickkopf-2, Dickkopf-related protein 2

Gene ID: 27123

NCBI Accession: [NP_064661](#)

UniProt: [Q9UBU2](#)

Pathways: [WNT Signaling](#)

Application Details

Application Notes: Approved: IHC, IHC-P (2.5 - 5 µg/mL), WB (1 µg/mL)

Usage: Western Blot: Suggested dilution at 1 µg/mL in 5 % skim milk / PBS buffer, and HRP conjugated anti-Rabbit IgG should be diluted in 1: 50,000 - 100,000 as secondary antibody.

Comment: Target Species of Antibody: Mouse

Restrictions: For Research Use only

Handling

Format: Lyophilized

Reconstitution: Distilled water

Concentration: Lot specific

Buffer: Lyophilized from PBS with 2 % sucrose

Handling Advice: Avoid repeat freeze-thaw cycles.

Storage: 4 °C, -20 °C

Storage Comment: Long term: -20°C, the use of 50% glycerol is recommended if storing aliquots in -20°C for long

Handling

term use (up to 1 year)
Short term (less than 1 week): 4°C. Avoid freeze-thaw cycles.

Images

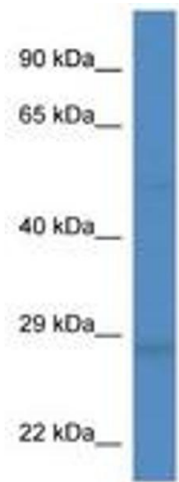


Image 1.

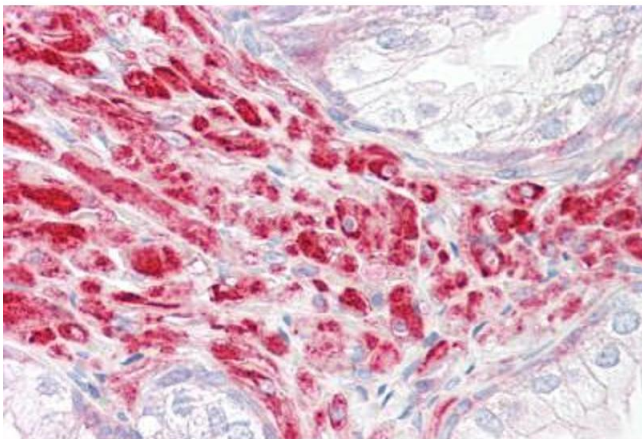
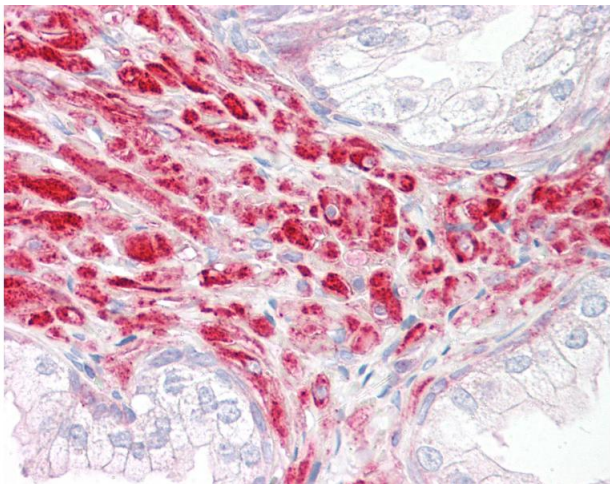


Image 2.



Immunohistochemistry
Image 3. Anti-DKK2 antibody IHC of human prostate. Immunohistochemistry of formalin-fixed, paraffin-embedded tissue after heat-induced antigen retrieval. Antibody dilution 2.5-5 ug/ml. This image was taken for the unconjugated form of this product. Other for ...