



[Go to Product page](#)

Datasheet for ABIN6749763
anti-Plastin 3 antibody (AA 503-552)

3 Images

Overview

Quantity:	100 µL
Target:	Plastin 3 (PLS3)
Binding Specificity:	AA 503-552
Reactivity:	Human, Mouse, Rat, Pig, Rabbit, Cow, Dog, Horse, Bat, Hamster, Monkey
Host:	Rabbit
Clonality:	Polyclonal
Conjugate:	This Plastin 3 antibody is un-conjugated
Application:	Western Blotting (WB), Immunohistochemistry (IHC), Immunohistochemistry (Paraffin-embedded Sections) (IHC (p))

Product Details

Brand:	IHC-plus™
Immunogen:	Synthetic peptide located between aa503-552 of human PLS3 (P13797, NP_005023). Percent identity by BLAST analysis: Human, Chimpanzee, Gorilla, Orangutan, Gibbon, Monkey, Galago, Marmoset, Mouse, Rat, Hamster, Elephant, Dog, Bovine, Bat, Rabbit, Horse, Pig, Opossum, Platypus (100%), Guinea pig, Turkey, Zebra finch, Chicken (92%), Xenopus (84%). Type of Immunogen: Synthetic peptide
Isotype:	IgG
Specificity:	Human PLS3 / T-plastin
Predicted Reactivity:	Percent identity by BLAST analysis: Human, Mouse, Rat, Dog, Bovine, Rabbit, Horse, Pig (100%)

Product Details

Guinea pig, Chicken (92%).

Purification: Immunoaffinity purified

Target Details

Target: Plastin 3 (PLS3)

Alternative Name: PLS3 / T Plastin ([PLS3 Products](#))

Background: Name/Gene ID: PLS3

Synonyms: PLS3, T plastin, T-plastin, T fimbrin, Plastin 3, Plastin-3, Plastin 3 (T isoform)

Gene ID: 5358

NCBI Accession: [NP_005023](#)

UniProt: [P13797](#)

Application Details

Application Notes: Approved: IHC, IHC-P (5 - 7.5 µg/mL), WB (0.2 - 1 µg/mL)

Usage: Western Blot: Suggested dilution at 1.0 µg/mL in 5 % skim milk / PBS buffer, and HRP conjugated anti-Rabbit IgG should be diluted in 1: 50,000 - 100,000 as second antibody. ELISA titer in peptide based assay: 1:62500.

Comment: Target Species of Antibody: Human

Restrictions: For Research Use only

Handling

Format: Lyophilized

Reconstitution: Distilled water

Concentration: Lot specific

Buffer: Lyophilized from PBS with 2 % sucrose

Handling Advice: Avoid repeat freeze-thaw cycles.

Storage: 4 °C, -20 °C

Storage Comment: Long term: -20°C, the use of 50% glycerol is recommended if storing aliquots in -20°C for long

Handling

term use (up to 1 year)

Short term (less than 1 week): 4°C. Avoid freeze-thaw cycles.

Images

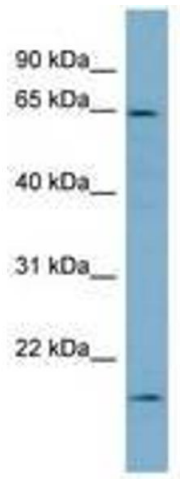


Image 1.

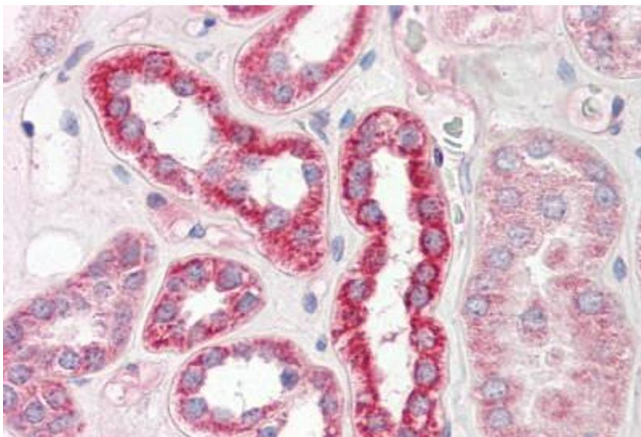
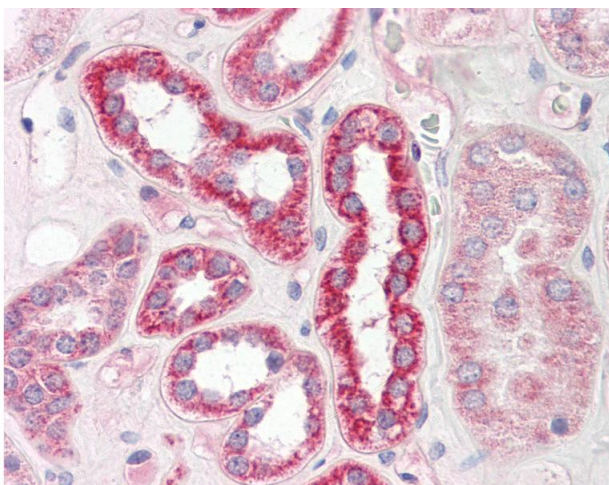


Image 2.



Immunohistochemistry

Image 3. Anti-PLS3 / T Plastin antibody IHC of human kidney. Immunohistochemistry of formalin-fixed, paraffin-embedded tissue after heat-induced antigen retrieval. Antibody dilution 5-7.5 ug/ml. This image was taken for the unconjugated form of this product. ...