

Datasheet for ABIN6749765 anti-MSRA antibody (C-Term)



[Go to Product page](#)

2 Images

Overview

Quantity:	100 µL
Target:	MSRA
Binding Specificity:	C-Term
Reactivity:	Human, Mouse, Rat, Pig, Dog, Rabbit, Horse, Guinea Pig, Monkey, Bat, Chicken
Host:	Rabbit
Clonality:	Polyclonal
Conjugate:	This MSRA antibody is un-conjugated
Application:	Immunohistochemistry (IHC), Immunohistochemistry (Paraffin-embedded Sections) (IHC (p))

Product Details

Brand:	IHC-plus™
Immunogen:	Synthetic peptide from C-Terminus of human MSRA (Q9UJ68, NP_036463). Percent identity by BLAST analysis: Human, Chimpanzee, Gibbon, Monkey, Galago, Mouse, Rat, Elephant, Panda, Dog, Bat, Rabbit, Horse, Pig, Opossum, Guinea pig, Chicken, Lizard, Trout, Salmon, Sablefish (100%), Gorilla, Bovine, Platypus, Smelt (92%). Type of Immunogen: Synthetic peptide
Specificity:	Human MSRA
Predicted Reactivity:	Percent identity by BLAST analysis: Human, Mouse, Rat, Dog, Pig, Guinea pig, Chicken, Xenopus (100%) Bovine (92%).
Purification:	Immunoaffinity purified

Target Details

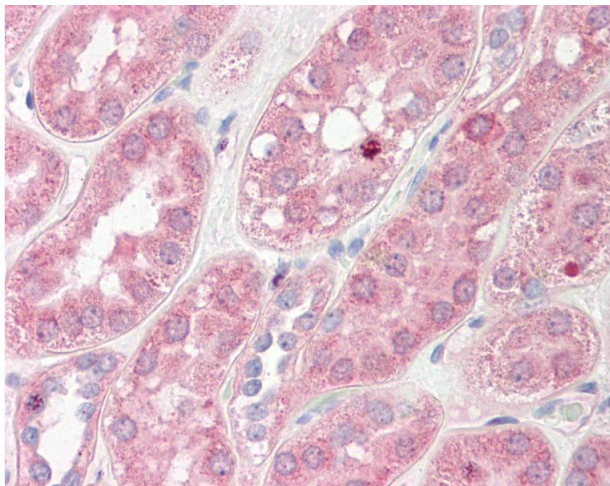
Target:	MSRA
Alternative Name:	MSRA (MSRA Products)
Background:	Name/Gene ID: MSRA Synonyms: MSRA, PMSR, Peptide met (O) reductase, Peptide Met(O) reductase
Gene ID:	4482
NCBI Accession:	NP_036463
UniProt:	Q9UJ68

Application Details

Application Notes:	Approved: IHC, IHC-P (2.5 - 5 µg/mL)
Comment:	Target Species of Antibody: Human
Restrictions:	For Research Use only

Handling

Format:	Lyophilized
Reconstitution:	Distilled water
Concentration:	Lot specific
Buffer:	Lyophilized from PBS with 2 % sucrose
Handling Advice:	Avoid repeat freeze-thaw cycles.
Storage:	4 °C, -20 °C
Storage Comment:	Long term: -20°C, the use of 50% glycerol is recommended if storing aliquots in -20°C for long term use (up to 1 year) Short term (less than 1 week): 4°C. Avoid freeze-thaw cycles.



Immunohistochemistry

Image 1. Anti-MSRA antibody IHC of human kidney. Immunohistochemistry of formalin-fixed, paraffin-embedded tissue after heat-induced antigen retrieval. Antibody dilution 2.5-5 ug/ml. This image was taken for the unconjugated form of this product. Other forms ...

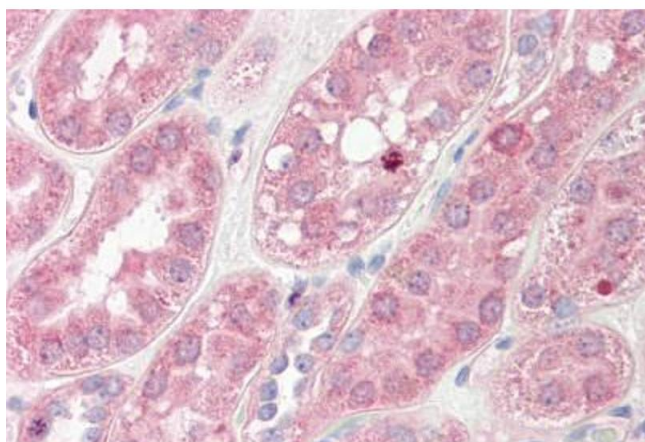


Image 2.