

Datasheet for ABIN6749766
anti-PSME1 antibody (AA 72-121)

3 Images

[Go to Product page](#)

Overview

Quantity:	100 µL
Target:	PSME1
Binding Specificity:	AA 72-121
Reactivity:	Human, Mouse, Pig, Monkey, Bat
Host:	Rabbit
Clonality:	Polyclonal
Conjugate:	This PSME1 antibody is un-conjugated
Application:	Western Blotting (WB), Immunohistochemistry (IHC), Immunohistochemistry (Paraffin-embedded Sections) (IHC (p))

Product Details

Brand:	IHC-plus™
Immunogen:	Synthetic peptide located between aa72-121 of human PSME1 (Q06323, NP_788955). Percent identity by BLAST analysis: Human, Chimpanzee, Gibbon, Monkey, Galago, Elephant, Panda, Bat, Pig (100%), Rat, Dog, Bovine, Rabbit, Guinea pig (92%), Mouse (85%). Type of Immunogen: Synthetic peptide
Specificity:	Human PSME1
Predicted Reactivity:	Percent identity by BLAST analysis: Human, Pig (100%) Rat, Dog, Bovine, Rabbit (92%) Mouse (85%).
Purification:	Immunoaffinity purified

Target Details

Target:	PSME1
Alternative Name:	PSME1 (PSME1 Products)
Background:	Name/Gene ID: PSME1 Synonyms: PSME1, 29-kD MCP activator subunit, IFI5111, IGUP I-5111, REG-alpha, REGalpha, PA28A, Interferon-gamma IEF SSP 5111, PA28alpha, Proteasome activator subunit-1
Gene ID:	5720
NCBI Accession:	NP_788955
UniProt:	Q06323
Pathways:	Mitotic G1-G1/S Phases , DNA Replication , Positive Regulation of Endopeptidase Activity , Synthesis of DNA

Application Details

Application Notes:	Approved: IHC, IHC-P (5 - 7.5 µg/mL), WB (0.2 - 1 µg/mL) Usage: Western Blot: Suggested dilution at 1 µg/mL in 5 % skim milk / PBS buffer, and HRP conjugated anti-Rabbit IgG should be diluted in 1: 50,000 - 100,000 as secondary antibody.
Comment:	Target Species of Antibody: Human
Restrictions:	For Research Use only

Handling

Format:	Lyophilized
Reconstitution:	Distilled water
Concentration:	Lot specific
Buffer:	Lyophilized from PBS with 2 % sucrose
Handling Advice:	Avoid repeat freeze-thaw cycles.
Storage:	4 °C, -20 °C
Storage Comment:	Long term: -20°C, the use of 50% glycerol is recommended if storing aliquots in -20°C for long term use (up to 1 year) Short term (less than 1 week): 4°C. Avoid freeze-thaw cycles.



Image 1.

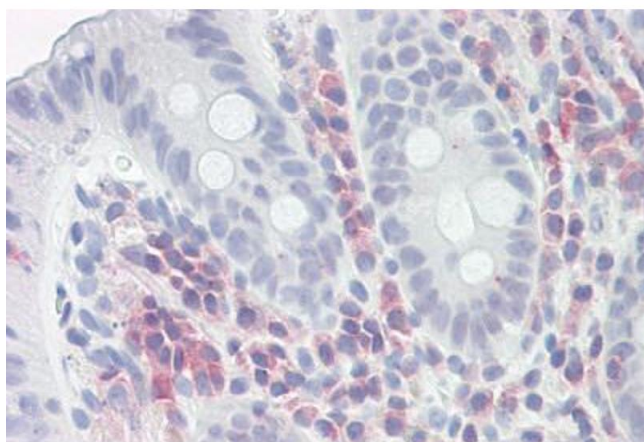
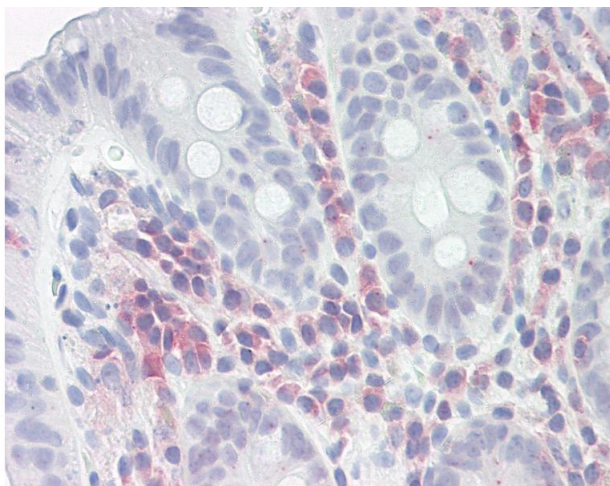


Image 2.



Immunohistochemistry

Image 3. Anti-PSME1 antibody IHC of human colon. Immunohistochemistry of formalin-fixed, paraffin-embedded tissue after heat-induced antigen retrieval. Antibody dilution 5-7.5 ug/ml. This image was taken for the unconjugated form of this product. Other forms ...