



Datasheet for ABIN6749768  
**anti-ZCCHC11 antibody (AA 1403-1452)**



[Go to Product page](#)

3 Images

Overview

|                      |  |
|----------------------|--|
| Quantity:            | 100 µL   |
| Target:              | ZCCHC11  |
| Binding Specificity: | AA 1403-1452   |
| Reactivity:          | Human, Dog, Cow, Guinea Pig, Pig, Bat  |
| Host:                | Rabbit   |
| Clonality:           | Polyclonal   |
| Conjugate:           | This ZCCHC11 antibody is un-conjugated   |
| Application:         | Western Blotting (WB), Immunohistochemistry (IHC), Immunohistochemistry (Paraffin-embedded Sections) (IHC (p)) |

Product Details

|                       |   |
|-----------------------|---|
| Brand:                | IHC-plus™   |
| Immunogen:            | Synthetic peptide located between aa1403-1452 of human ZCCHC11 (Q5TAX3, NP_001009881). Percent identity by BLAST analysis: Human, Chimpanzee, Gorilla, Gibbon, Monkey, Dog, Bovine, Bat, Pig, Guinea pig (100%), Marmoset, Mouse, Rat, Elephant, Rabbit, Horse (92%).<br><br>Type of Immunogen: Synthetic peptide |
| Specificity:          | Human ZCCHC11   |
| Predicted Reactivity: | Percent identity by BLAST analysis: Human, Dog, Bovine, Pig, Guinea pig (100%) Mouse, Rat, Rabbit, Horse (92%).   |

## Product Details

---

Purification: Immunoaffinity purified

## Target Details

---

Target: ZCCHC11

Alternative Name: KIAA0191 / ZCCHC11 ([ZCCHC11 Products](#))

Background: Name/Gene ID: ZCCHC11

Synonyms: ZCCHC11, Terminal uridylyltransferase 4, TUT4, PAPD3, KIAA0191, TUTase 4

Gene ID: 23318

NCBI Accession: [NP\\_001009881](#)

UniProt: [Q5TAX3](#)

Pathways: [Stem Cell Maintenance](#)

## Application Details

---

Application Notes: Approved: IHC, IHC-P (5 - 7.5 µg/mL), WB (0.2 - 1 µg/mL)

Usage: Western Blot: Suggested dilution at 1 µg/mL in 5 % skim milk / PBS buffer, and HRP conjugated anti-Rabbit IgG should be diluted in 1: 50,000 - 100,000 as secondary antibody.

Comment: Target Species of Antibody: Human

Restrictions: For Research Use only

## Handling

---

Format: Lyophilized

Reconstitution: Distilled water

Concentration: Lot specific

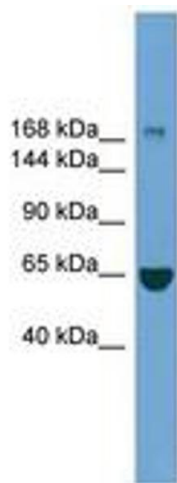
Buffer: Lyophilized from PBS with 2 % sucrose

Handling Advice: Avoid repeat freeze-thaw cycles.

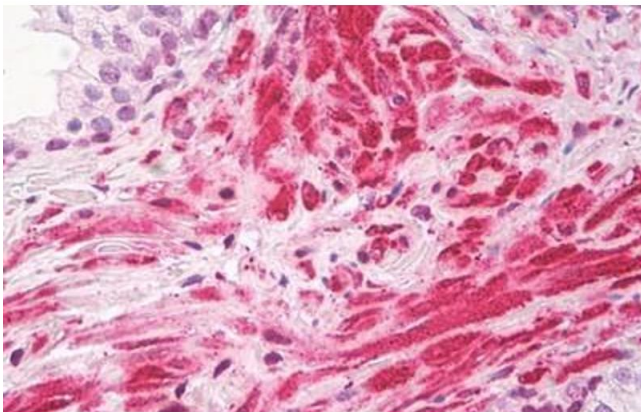
Storage: 4 °C, -20 °C

Storage Comment: Long term: -20°C, the use of 50% glycerol is recommended if storing aliquots in -20°C for long term use (up to 1 year)

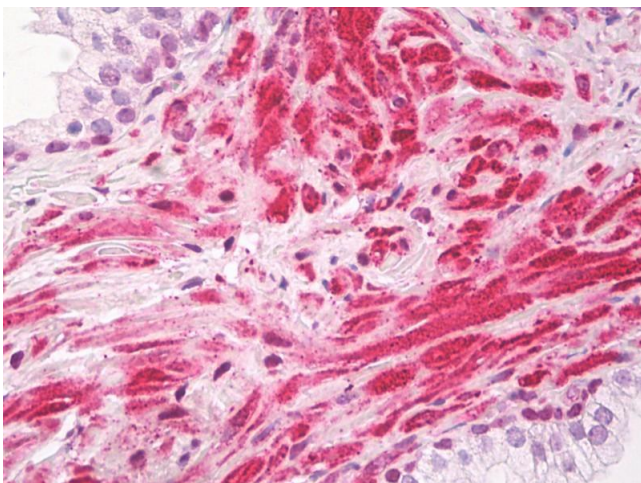
Short term (less than 1 week): 4°C. Avoid freeze-thaw cycles.



**Image 1.**



**Image 2.**



### Immunohistochemistry

**Image 3.** Anti-KIAA0191 / ZCCHC11 antibody IHC of human prostate. Immunohistochemistry of formalin-fixed, paraffin-embedded tissue after heat-induced antigen retrieval. Antibody dilution 5-7.5 ug/ml. This image was taken for the unconjugated form of this prod ...