

Datasheet for ABIN6749772 anti-CNR1 antibody (AA 73-122)



[Go to Product page](#)

3 Images

Overview

Quantity:	100 µL
Target:	CNR1
Binding Specificity:	AA 73-122
Reactivity:	Human, Rat, Monkey, Cow, Guinea Pig, Pig
Host:	Rabbit
Clonality:	Polyclonal
Conjugate:	This CNR1 antibody is un-conjugated
Application:	Western Blotting (WB), Immunohistochemistry (IHC), Immunohistochemistry (Paraffin-embedded Sections) (IHC (p))

Product Details

Brand:	IHC-plus™
Immunogen:	Synthetic peptide located between aa73-122 of human CNR1 (P21554, NP_057167). Percent identity by BLAST analysis: Human, Chimpanzee, Gorilla, Monkey, Rat, Bovine (100%), Mouse, Shrew, Hamster, Elephant, Panda, Dog, Cat, Rabbit, Horse, Turkey, Chicken (92%), Dolphin, Bat, Pig, Guinea pig, Platypus (85%). Type of Immunogen: Synthetic peptide
Specificity:	Human CNR1 / CB1
Predicted Reactivity:	Percent identity by BLAST analysis: Human, Rat, Bovine (100%) Mouse, Dog, Rabbit, Horse, Chicken (92%) Pig, Guinea pig (85%).

Product Details

Purification: Immunoaffinity purified

Target Details

Target: CNR1

Alternative Name: CNR1 / CB1 ([CNR1 Products](#))

Background: Name/Gene ID: CNR1
Subfamily: Cannabinoid
Family: GPCR

Synonyms: CNR1, CB-R, CB1 receptor, CB1A, CB1R, Cannabinoid receptor 1, Cannabinoid receptor CB1, Cannabinoid Receptor I, CB1, CB1K5, CANN6, Cannabinoid receptor 1 (brain), CNR, Cannabinoid CB(1) receptor, CB1 cannabinoid receptor, Central cannabinoid receptor

Gene ID: 1268

NCBI Accession: [NP_057167](#)

UniProt: [P21554](#)

Pathways: [Feeding Behaviour](#)

Application Details

Application Notes: Approved: IHC, IHC-P (5 - 10 µg/mL), WB (1 µg/mL)

Usage: Western Blot: Suggested dilution at 1 µg/mL in 5 % skim milk / PBS buffer, and HRP conjugated anti-Rabbit IgG should be diluted in 1: 50,000 - 100,000 as secondary antibody.

Comment: Target Species of Antibody: Human

Restrictions: For Research Use only

Handling

Format: Lyophilized

Reconstitution: Distilled water

Concentration: Lot specific

Buffer: Lyophilized from PBS with 2 % sucrose

Handling

Handling Advice:	Avoid repeat freeze-thaw cycles.
Storage:	4 °C,-20 °C
Storage Comment:	Long term: -20°C, the use of 50% glycerol is recommended if storing aliquots in -20°C for long term use (up to 1 year) Short term (less than 1 week): 4°C. Avoid freeze-thaw cycles.

Images

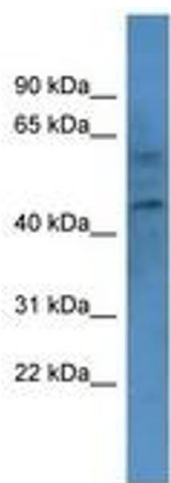


Image 1.

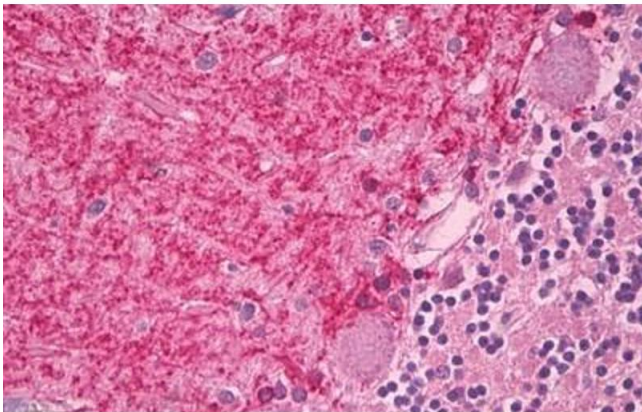
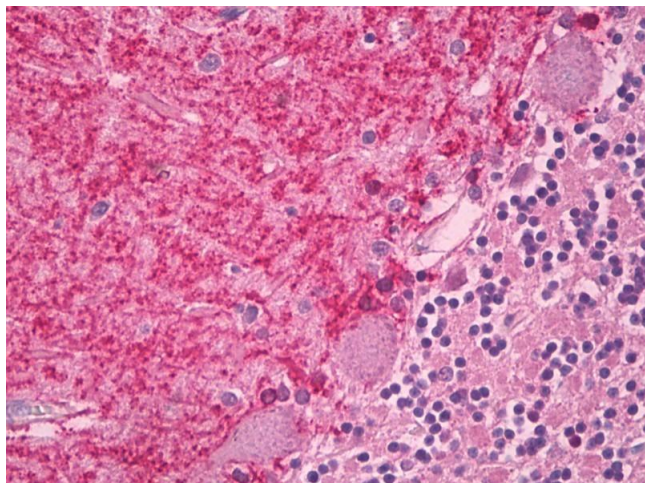


Image 2.



Immunohistochemistry (Paraffin-embedded Sections)

Image 3. Human, Brain Cerebellum: Formalin-Fixed Paraffin-Embedded (FFPE). This image was taken for the unconjugated form of this product. Other forms have not been tested.