

Datasheet for ABIN6749774
anti-RHOG antibody (AA 112-161)

3 Images

[Go to Product page](#)

Overview

Quantity:	100 µL
Target:	RHOG
Binding Specificity:	AA 112-161
Reactivity:	Human, Mouse, Rat, Cow, Dog, Guinea Pig, Horse, Rabbit, Zebrafish (Danio rerio), Bat, Hamster, Monkey, Pig
Host:	Rabbit
Clonality:	Polyclonal
Conjugate:	This RHOG antibody is un-conjugated
Application:	Western Blotting (WB), Immunohistochemistry (IHC), Immunohistochemistry (Paraffin-embedded Sections) (IHC (p))

Product Details

Brand:	IHC-plus™
Immunogen:	Synthetic peptide located between aa112-161 of human RHOG (P84095, NP_001656). Percent identity by BLAST analysis: Human, Chimpanzee, Gorilla, Gibbon, Monkey, Galago, Marmoset, Mouse, Rat, Hamster, Elephant, Panda, Dog, Bovine, Bat, Rabbit, Horse, Pig, Opossum, Guinea pig (100%), Zebrafish (85%), Zebra finch, Platypus (84%). Type of Immunogen: Synthetic peptide
Specificity:	Human RHOG
Predicted Reactivity:	Percent identity by BLAST analysis: Human, Mouse, Rat, Dog, Bovine, Pig (100%) Zebrafish

Product Details

(85%).

Purification: Immunoaffinity purified

Target Details

Target: RHOG

Alternative Name: RHOG / ARHG ([RHOG Products](#))

Background: Name/Gene ID: RHOG
Family: Ras GTPase superfamily IPR001806

Synonyms: RHOG, ARHG, Ras homolog family member G

Gene ID: 391

NCBI Accession: [NP_001656](#)

UniProt: [P84095](#)

Pathways: [RTK Signaling](#)

Application Details

Application Notes: Approved: IHC, IHC-P (5 - 10 µg/mL), WB (0.2 - 1 µg/mL)

Usage: Western Blot: Suggested dilution at 1 µg/mL in 5 % skim milk / PBS buffer, and HRP conjugated anti-Rabbit IgG should be diluted in 1: 50,000 - 100,000 as secondary antibody.

Comment: Target Species of Antibody: Human

Restrictions: For Research Use only

Handling

Format: Lyophilized

Reconstitution: Distilled water

Concentration: Lot specific

Buffer: Lyophilized from PBS with 2 % sucrose

Handling Advice: Avoid repeat freeze-thaw cycles.

Storage: 4 °C, -20 °C

Handling

Storage Comment: Long term: -20°C, the use of 50% glycerol is recommended if storing aliquots in -20°C for long term use (up to 1 year)

Short term (less than 1 week): 4°C. Avoid freeze-thaw cycles.

Images

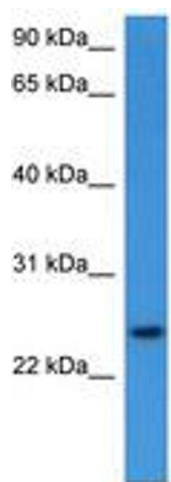


Image 1.

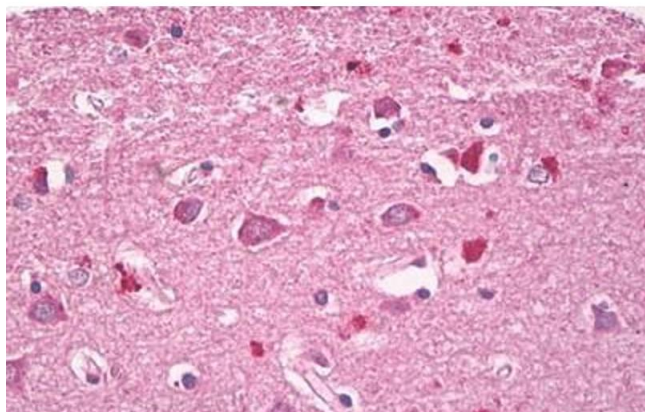
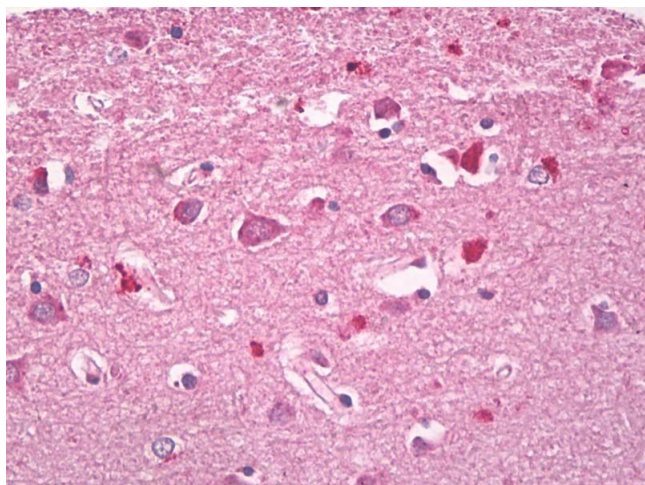


Image 2.



Immunohistochemistry

Image 3. Human, Brain, Cortex: Formalin-Fixed Paraffin-Embedded (FFPE). This image was taken for the unconjugated form of this product. Other forms have not been tested.